

## JAMESTOWN OFFICE PARK 3033, 3035, 3037 NW 63RD OKLAHOMA CITY, OK 73116



### 360° VIRTUAL TOUR

#### PROPERTY DESCRIPTION

Variety of spaces available. The spaces feature a variety of flooring types, 2' X 4' grid ceilings, floor to ceiling glass and newly remodeled common restrooms and common hallways.

- Convenient location
- Drive-up free surface parking on all sides
- Professionally managed with on-site engineering

#### LOCATION DESCRIPTION

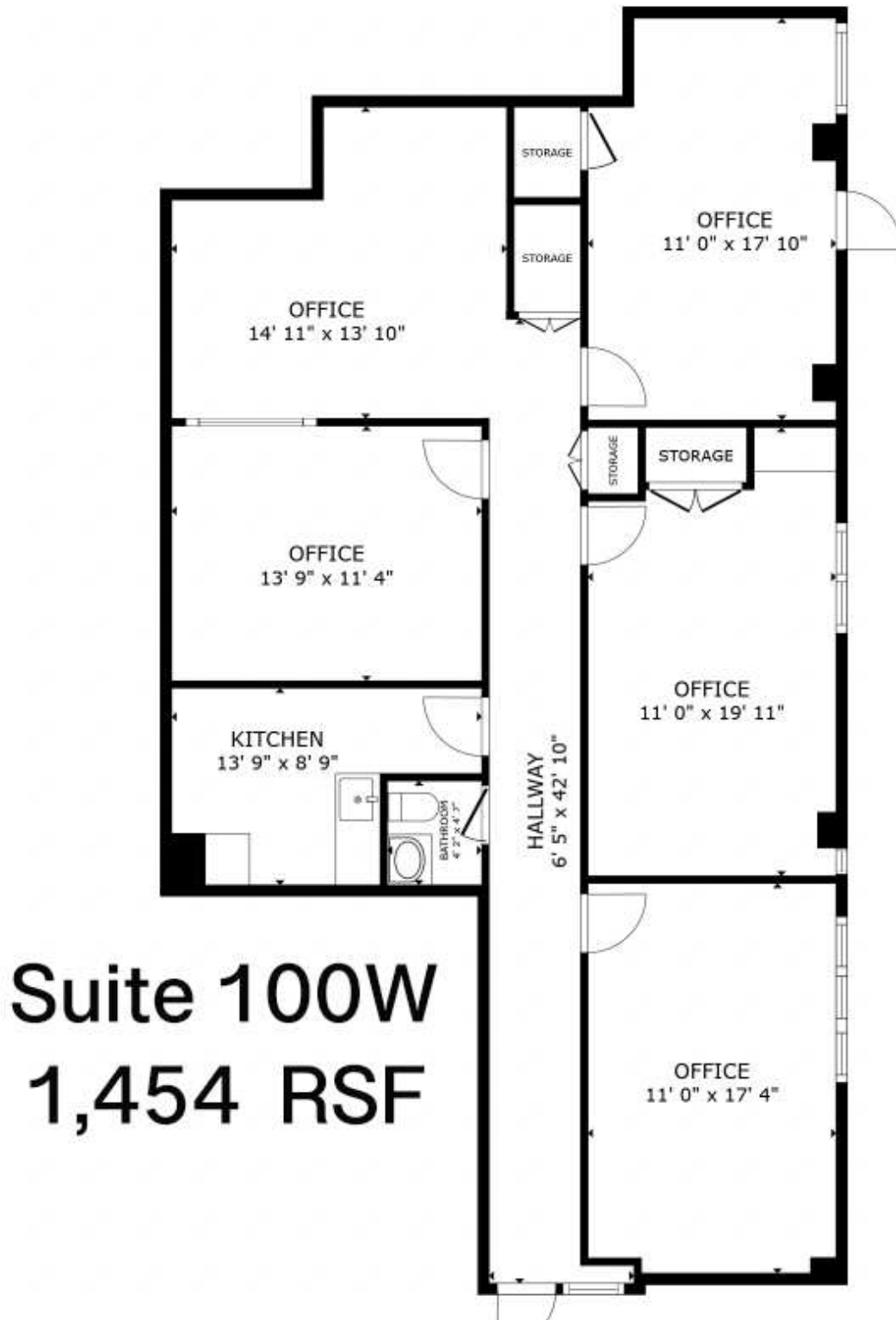
Nestled in the heart of the desirable Northwest quadrant, this value packed, three building complex delivers the ambiance of a suburban garden style property with the convenience of a larger, multi-tenant complex. Mature landscaping and multiple water features combined with floor to ceiling glass lines makes this building a serene and comfortable working environment.

#### OFFERING SUMMARY

<b>Suite 100W:</b>	1,454 RSF
<b>Lease Rate:</b>	\$15.00 SF/yr (Gross)
<b>Building Size:</b>	76,263 SF
<b>Year Built / Renovated:</b>	1980 / 2012
<b>Market:</b>	NW OKC
<b>Cross Streets:</b>	NW 63rd & N. May Avenue

#### C. DEREK JAMES

djames@priceedwards.com  
O: 405.239.1206



**Suite 100W**  
**1,454 RSF**

**C. DEREK JAMES**

djames@priceedwards.com

O: 405.239.1206