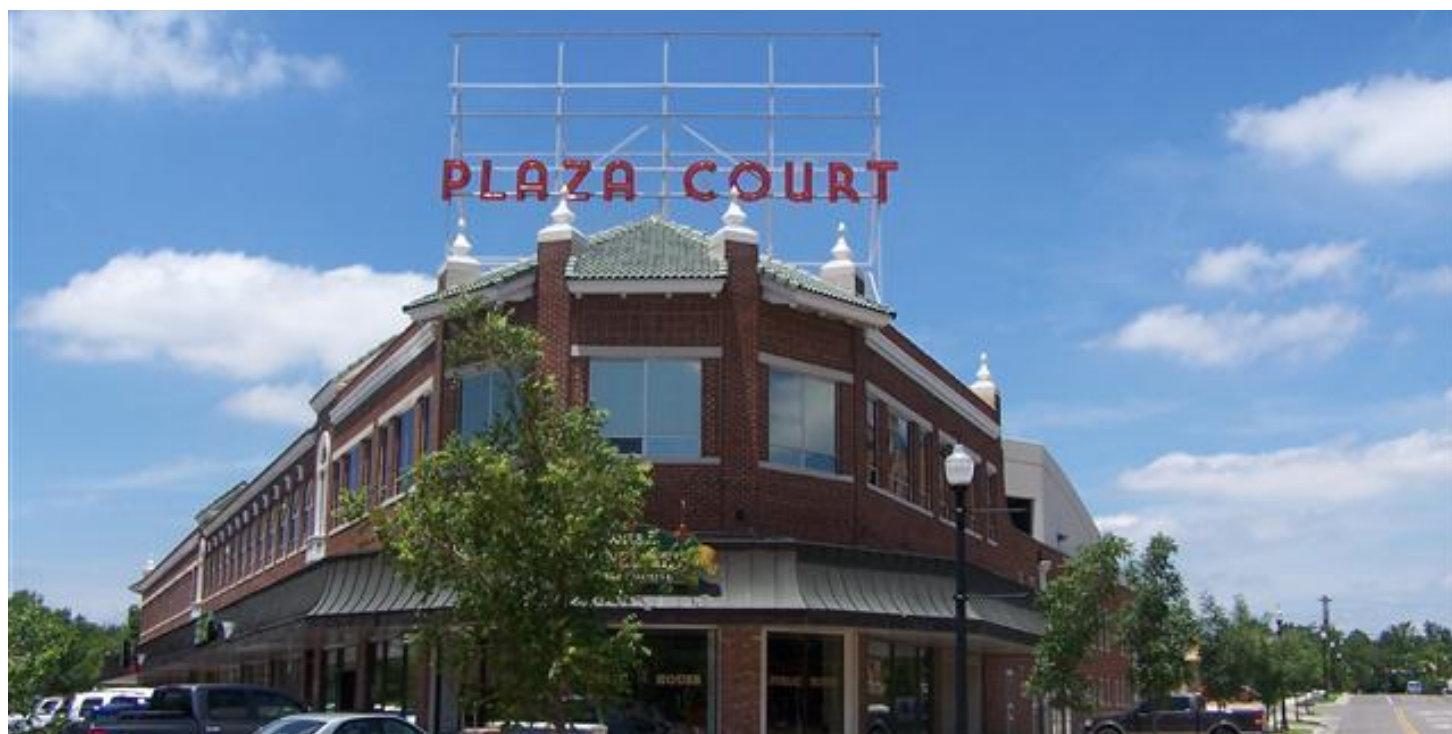


# Plaza Court

1100 N Classen Drive, Oklahoma City, OK 73106



## OFFICE SPACE NOW AVAILABLE

<b>Available SF:</b>	3,454 SF
<b>Lease Rate:</b>	\$16.00 - 18.00 SF/yr (NNN)
<b>Lot Size:</b>	1.0 Acres
<b>Building Size:</b>	38,501 SF
<b>Building Class:</b>	B
<b>Year Built:</b>	1927
<b>Renovated:</b>	2007
<b>Market:</b>	Midtown
<b>Sub Market:</b>	Midtown
<b>Cross Streets:</b>	NW 10th & Walker

## PROPERTY OVERVIEW

Three to five year agreement, triple net lease with pro-rata share of building electric and janitorial. Surface and ramp parking available on a "first come" basis.

## LOCATION OVERVIEW

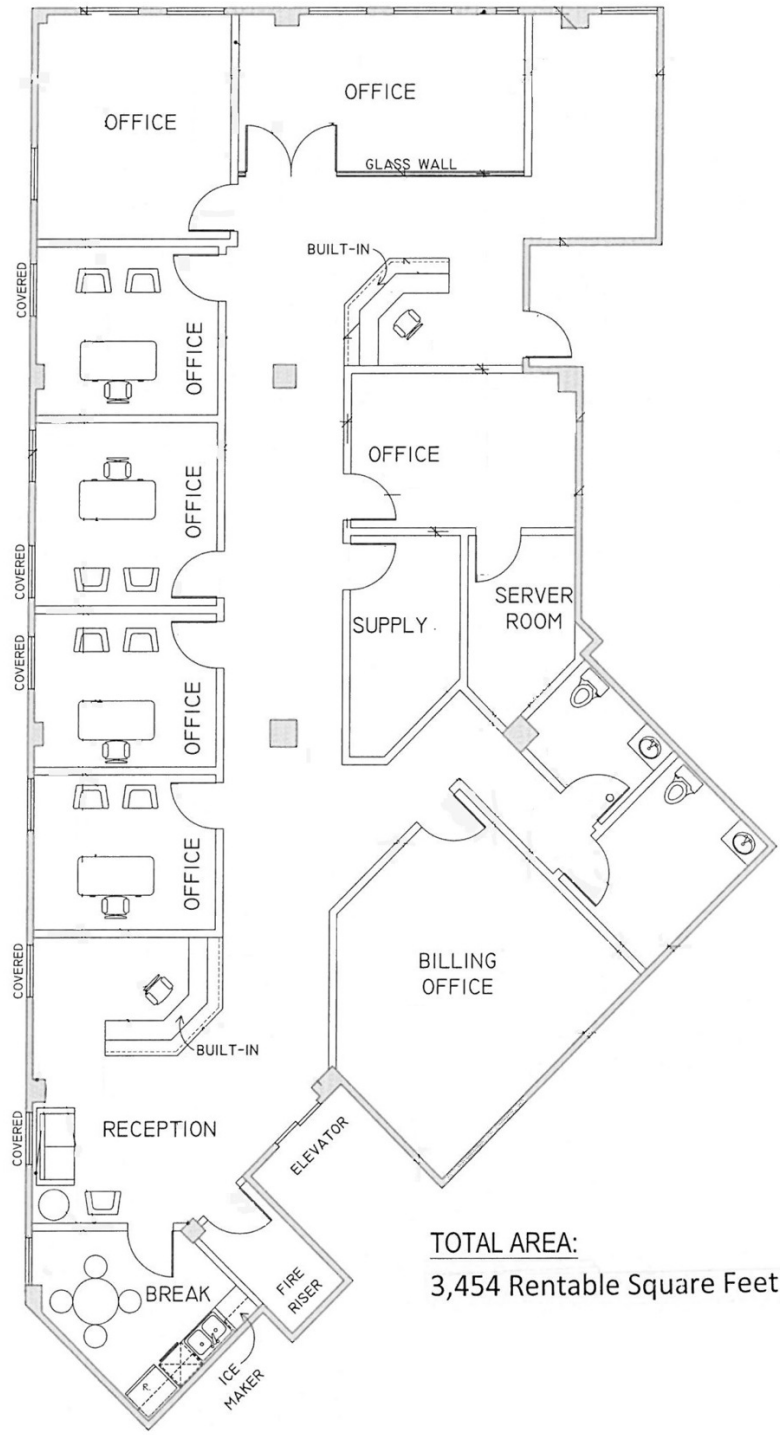
Extraordinary location in the heart of Midtown, in the same building as the Midtown YMCA, McNelly's Irish Pub and the Prairie Thunder Bakery. Saint Anthony's Medical Complex is across the street to the south, The Ambassador Hotel to the east and the new, Edge apartment complex to the north make this an ideal location to live, work and play.

## FOR MORE INFORMATION, CONTACT

Derek James  
djames@priceedwards.com  
405.843.7474  
210 Park Ave, Suite 1000  
Oklahoma City, OK 73102  
www.priceedwards.com

# Plaza Court - Mezzanine

1100 N Classen Drive, Oklahoma City, OK 73106



**TOTAL AREA:**  
3,454 Rentable Square Feet