

JAMESTOWN OFFICE PARK 3033, 3035, 3037 NW 63RD OKLAHOMA CITY, OK 73116



360° VIRTUAL TOUR

PROPERTY DESCRIPTION

The space spans 9,747 square feet and is located in the desirable northwest quadrant, near the intersection of NW 63rd Street and May Avenue. The layout includes 20 private offices, a large conference room, several smaller meeting rooms, a kitchen, and 3 to 4 executive-sized offices. There are also a limited number of covered parking spaces available. The perimeter offices feature floor-to-ceiling glass, and the space is equipped with LVT hardwood floors. It is conveniently situated close to both fast food and fine dining options. The ideal tenants for this space would be an oil and gas company, insurance company, accounting firm, or law firm.

LOCATION DESCRIPTION

Nestled in the heart of the desirable Northwest quadrant, this value packed, three building complex delivers the ambiance of a suburban garden style property with the convenience of a larger, multi-tenant complex. Mature landscaping and multiple water features combined with floor to ceiling glass lines makes this building a serene and comfortable working environment.

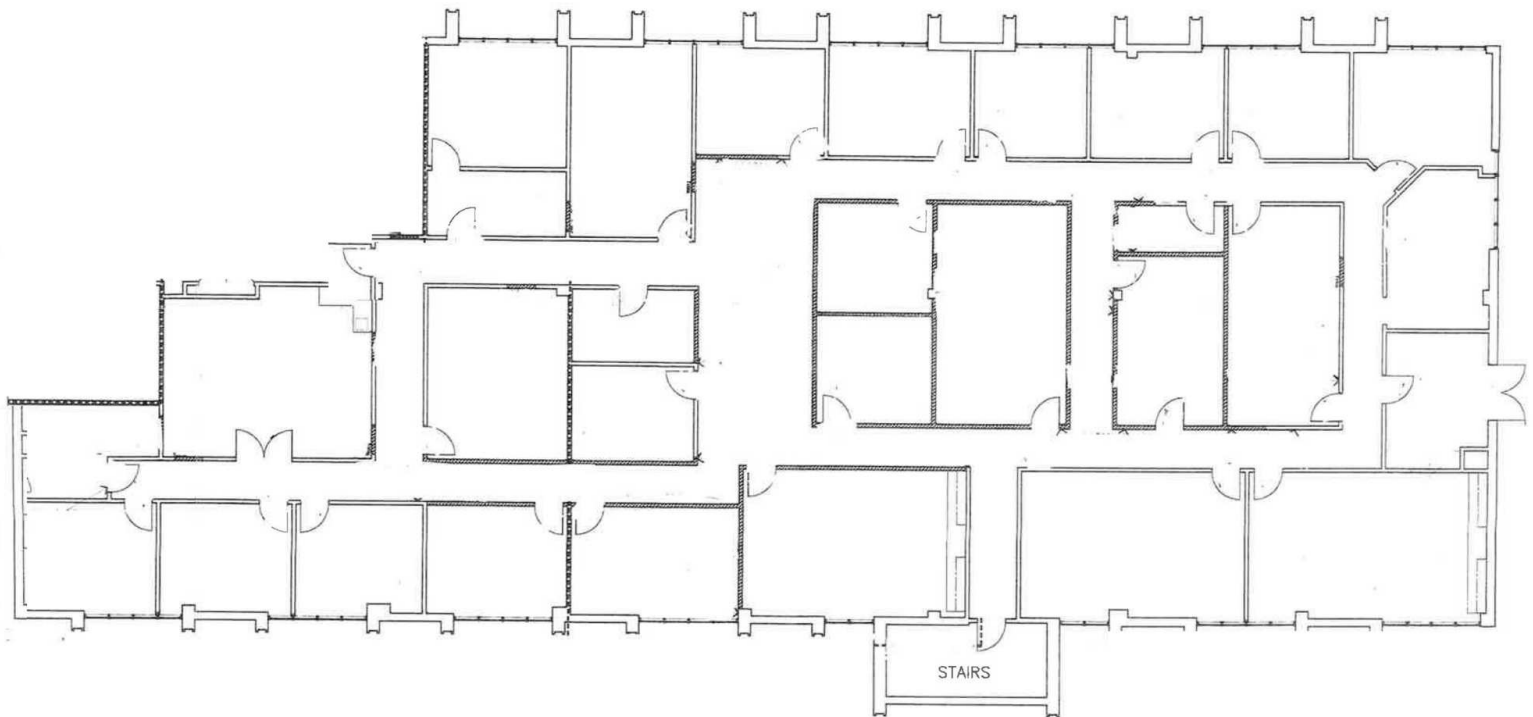
C. DEREK JAMES

djames@priceedwards.com
O: 405.239.1206

OFFERING SUMMARY

Suite 105N Sublease:	9,747 SF
Lease Rate:	\$14.50 SF/yr (Gross)
Building Size:	76,263 SF
Year Built/Renovated:	1980 / 2012
Cross Streets:	NW 63rd & May Avenue

**SUBLET
SUITE 105N
9,747 RSF**



C. DEREK JAMES

djames@priceedwards.com

O: 405.239.1206