

JAMESTOWN OFFICE PARK 3033, 3035, 3037 NW 63RD OKLAHOMA CITY, OK 73116



PROPERTY DESCRIPTION

Variety of spaces available. The spaces feature a variety of flooring types, 2' X 4' grid ceilings, floor to ceiling glass and newly remodeled common restrooms and common hallways.

- Convenient location
- Drive-up free surface parking on all sides
- Professionally managed with on-site engineering

LOCATION DESCRIPTION

Nestled in the heart of the desirable Northwest quadrant, this value packed, three building complex delivers the ambiance of a suburban garden style property with the convenience of a larger, multi-tenant complex. Mature landscaping and multiple water features combined with floor to ceiling glass lines makes this building a serene and comfortable working environment.

OFFERING SUMMARY

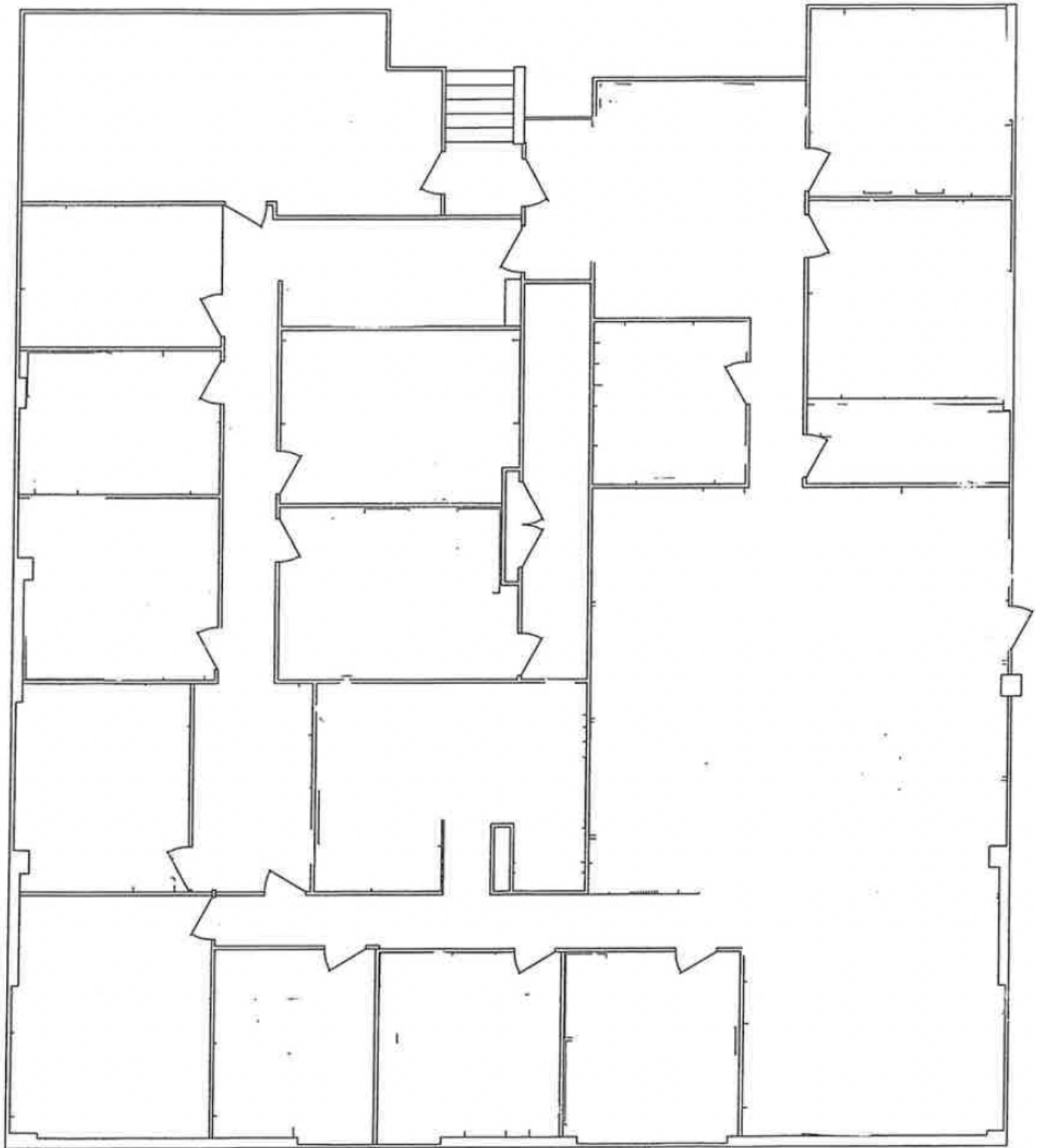
| | |
|--------------------------------|-------------------------|
| Suite 250E: | 478 RSF |
| Lease Rate: | \$15.00 SF/yr (Gross) |
| Building Size: | 76,263 SF |
| Year Built / Renovated: | 1980 / 2012 |
| Market: | NW OKC |
| Cross Streets: | NW 63rd & N. May Avenue |

C. DEREK JAMES

djames@priceedwards.com

O: 405.239.1206

JAMESTOWN OFFICE PARK 3033, 3035, 3037 NW 63RD OKLAHOMA CITY, OK 73116



C. DEREK JAMES

djames@priceedwards.com

O: 405.239.1206