

## 510 EAST MEMORIAL ROAD

## OKLAHOMA CITY, OK 73114



### LOCATION DESCRIPTION

Located a half of a mile west of the Broadway Extension off of Memorial Road.

### PROPERTY HIGHLIGHTS

- Tenant pays utilities direct to provider plus tenants share water/sewer/trash
- This beautiful garden office property consists of 4 buildings totaling about 32,000 SF
- Abundant parking adjacent to the office
- Restaurants within walking distance
- Tenant controls heat & air conditioning
- Landlord responsible for maintenance

### OFFERING SUMMARY

<b>Building A-3:</b>	±2,075 RSF
	\$2,300 / month + \$100 / month CAM
<b>Building A-4:</b>	±2,075 RSF
	\$2,300 / month + \$100 / month CAM
<b>*Both A spaces can be combined for ±4,150 RSF</b>	
<b>Building B-2:</b>	±2,075 RSF
	\$2,300 / month + \$100 / month CAM

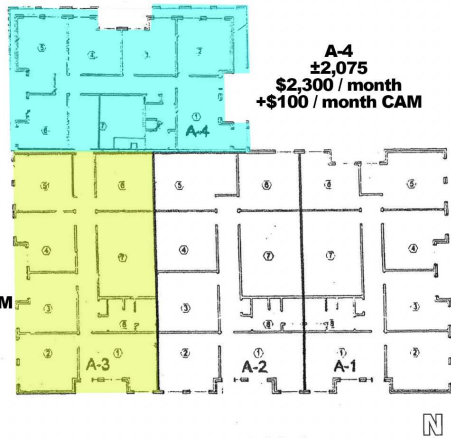
### TOM FIELDS

tfields@priceedwards.com  
O: 405.239.1205

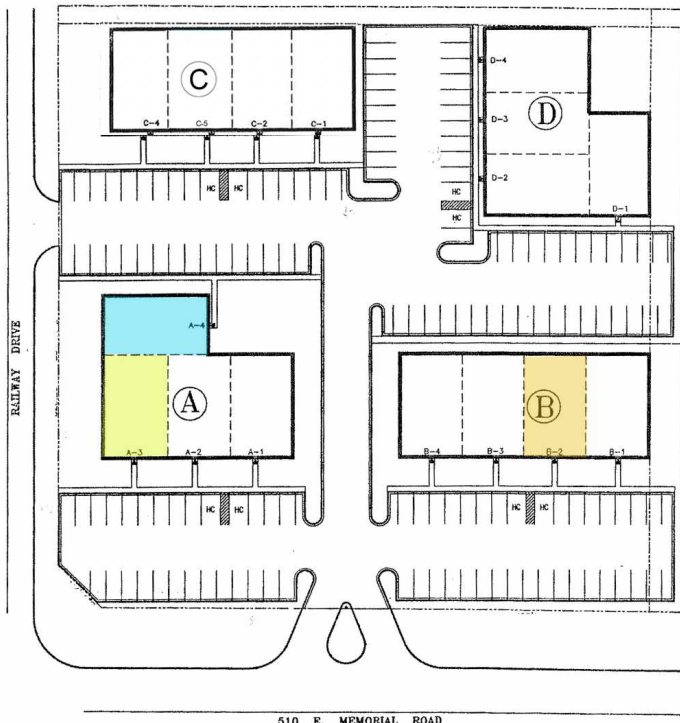
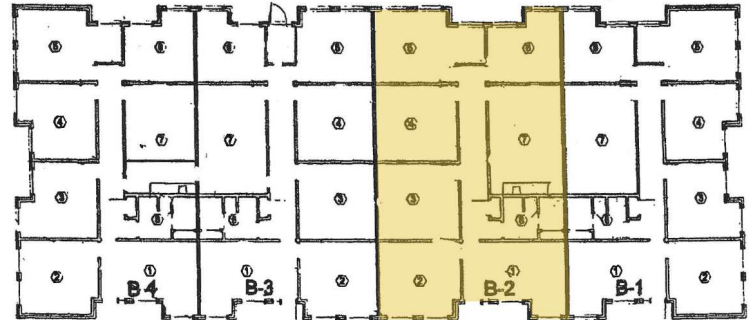
## 510 EAST MEMORIAL ROAD

## OKLAHOMA CITY, OK 73114

Both spaces can be combined for ±4,150 RSF



**B-2**  
±2,075  
\$2,300 / month  
+\$100 / month CAM



**TOM FIELDS**

tfields@priceedwards.com

O: 405.239.1205