

CLASS A MEDICAL OFFICE SPACE

401 S COLTRANE, EDMOND, OK 73034



## LOCATION DESCRIPTION

Located on Coltrane south of 2nd Street. Only one mile West of I-35 in a growing part of Edmond.

## PROPERTY HIGHLIGHTS

- Medical Office
- 5 exam rooms
- Outdoor balconies
- Ample on-site parking
- Quick access to the I-35 & the Broadway Extension
- Spacious offices, custom built
- Includes normal utilities, janitorial & maintenance
- Tenant pays internet / phone
- On-site property management and ownership

## OFFERING SUMMARY

<b>Suite 280:</b>	±2,364 RSF \$24.50/SF with 3% annual increases
<b>Market:</b>	Edmond
<b>Class:</b>	A

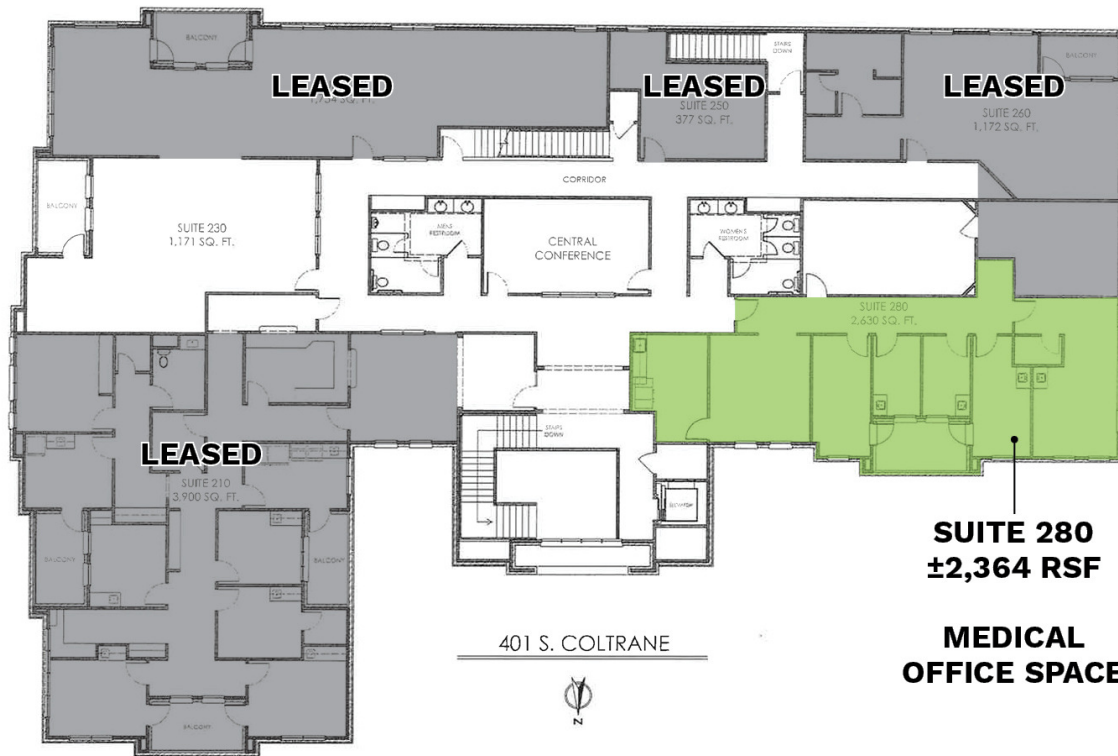
### TOM FIELDS

tfields@priceedwards.com

O: 405.239.1205 C: 405.641.0598

CLASS A MEDICAL OFFICE SPACE

401 S COLTRANE, EDMOND, OK 73034



## TOM FIELDS

tfields@priceedwards.com

O: 405.239.1205 C: 405.641.0598