

## 3325 FRENCH PARK DRIVE

## EDMOND, OK 73034



### LOCATION DESCRIPTION

Located in East Edmond; French Park is on the south side of E. 2nd Street which is located 3/4 mile west of I-35.

### PROPERTY HIGHLIGHTS

- Ample on-site parking
- Executive office space
- Locally owned and managed
- Includes normal utilities, janitorial & maintenance.
- Tenant pays internet/phone

### OFFERING SUMMARY

<b>Suite 2 (1st Floor):</b>	±1,350 SF \$1,800 / month with 3% annual increases
-----------------------------	--

<b>Market:</b>	Edmond
----------------	--------

<b>Class:</b>	B
---------------	---

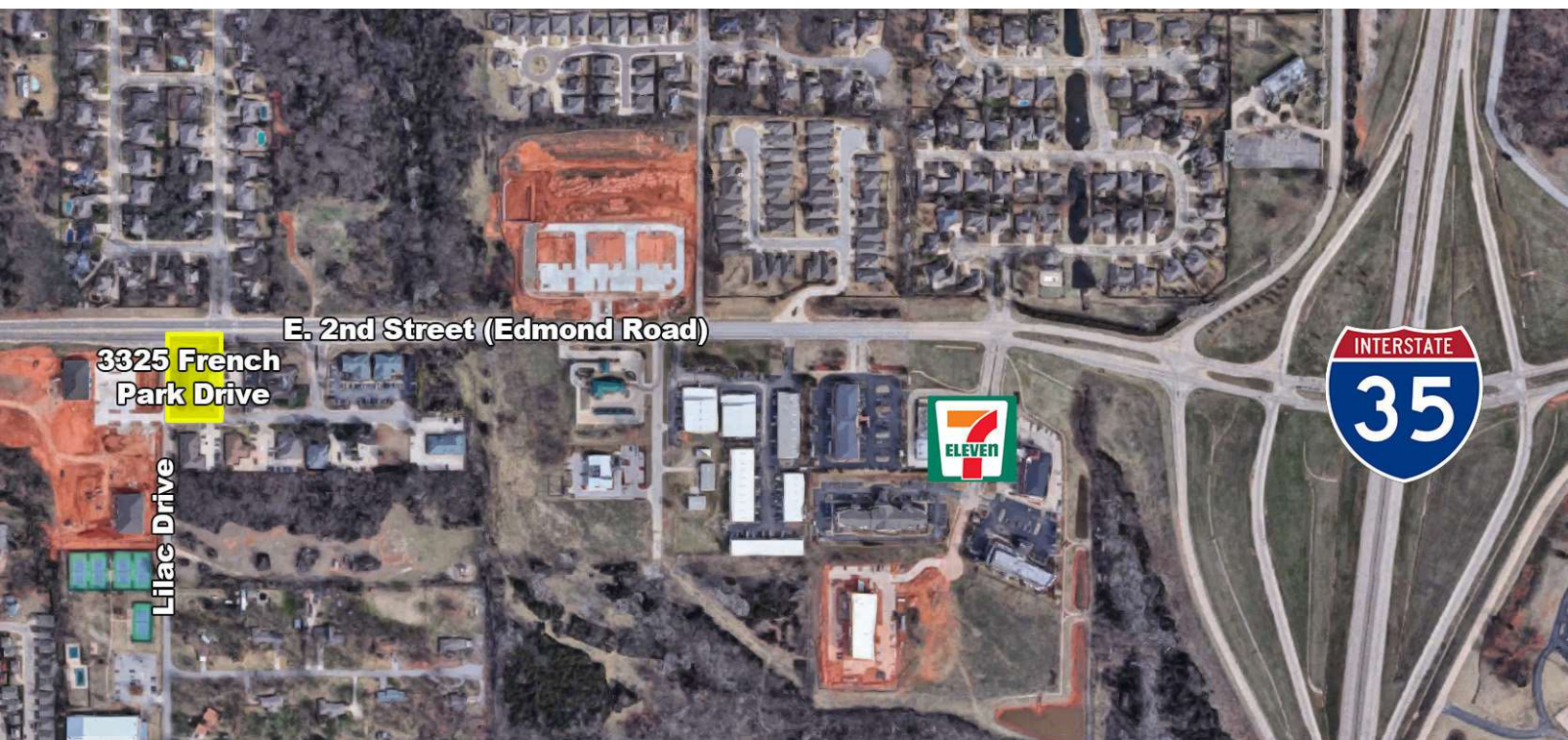
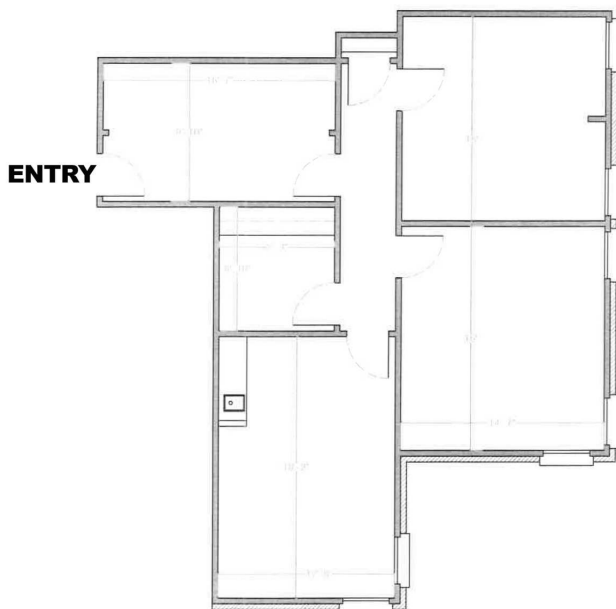
### TOM FIELDS

tfields@priceedwards.com  
O: 405.239.1205

## 3325 FRENCH PARK DRIVE

## EDMOND, OK 73034

**SUITE 2**  
**±1,350 SF**  
**\$1,800 / MONTH**



**TOM FIELDS**

tfields@priceedwards.com

O: 405.239.1205