

## OFFERING SUMMARY

Sale Price:	\$495,000
Building Size:	2,230 SF
Lot Size:	0.47 Acres
Price / SF:	\$221.97
Year Built:	1980
Zoning:	Commercial
Market:	OKC Metro
Submarket:	Moore

## PROPERTY OVERVIEW

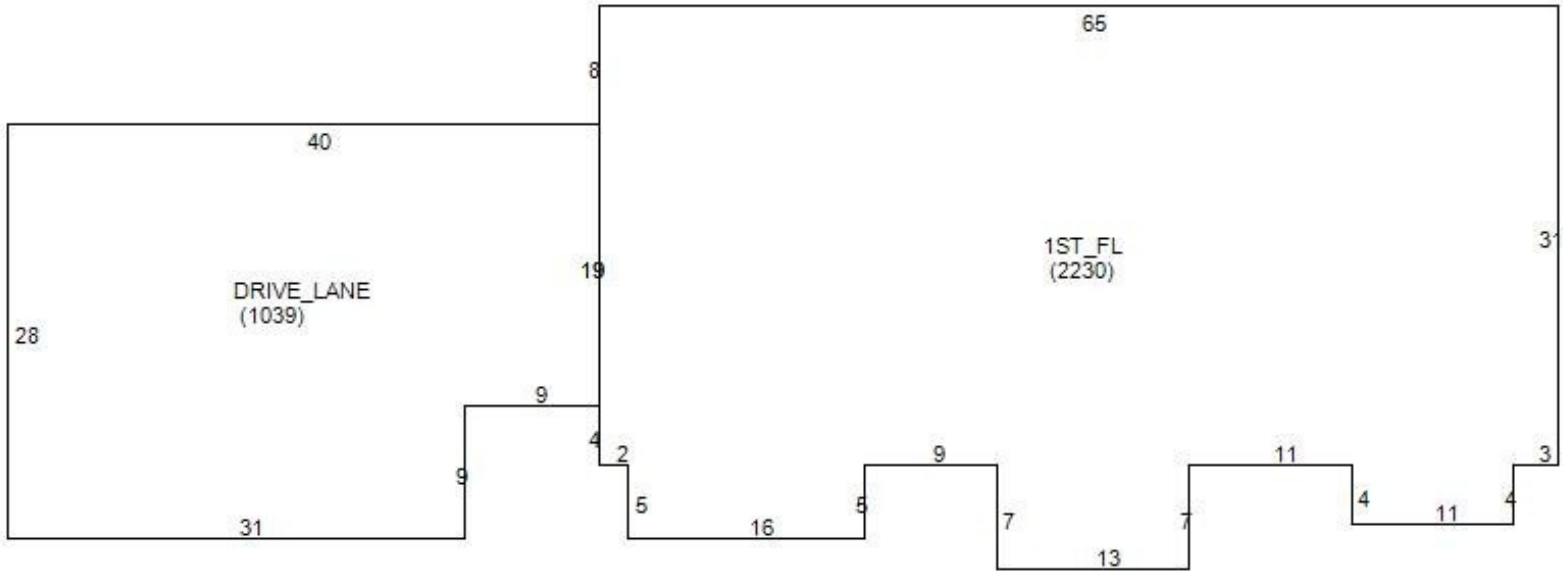
Former bank building with 2,230 square feet of space ideal for banking, retail or office. The property is located between I-35 and N Eastern Avenue east of I-35. The 2,230 square foot building also includes a 3 bay drive thru bank system. The building is in good condition and would be ideal for many different uses.

## PROPERTY HIGHLIGHTS

- Bank Facility
- Bank Vault
- Drive-Thru facility
- Great location next to Crest Foods

**PAUL RAVENCRAFT**  
405.239.1220  
pravencraft@pricedwards.com  
pricedwards.com

**GEORGE WILLIAMS, CCIM**  
405.239.1270  
gwilliams@pricedwards.com  
pricedwards.com

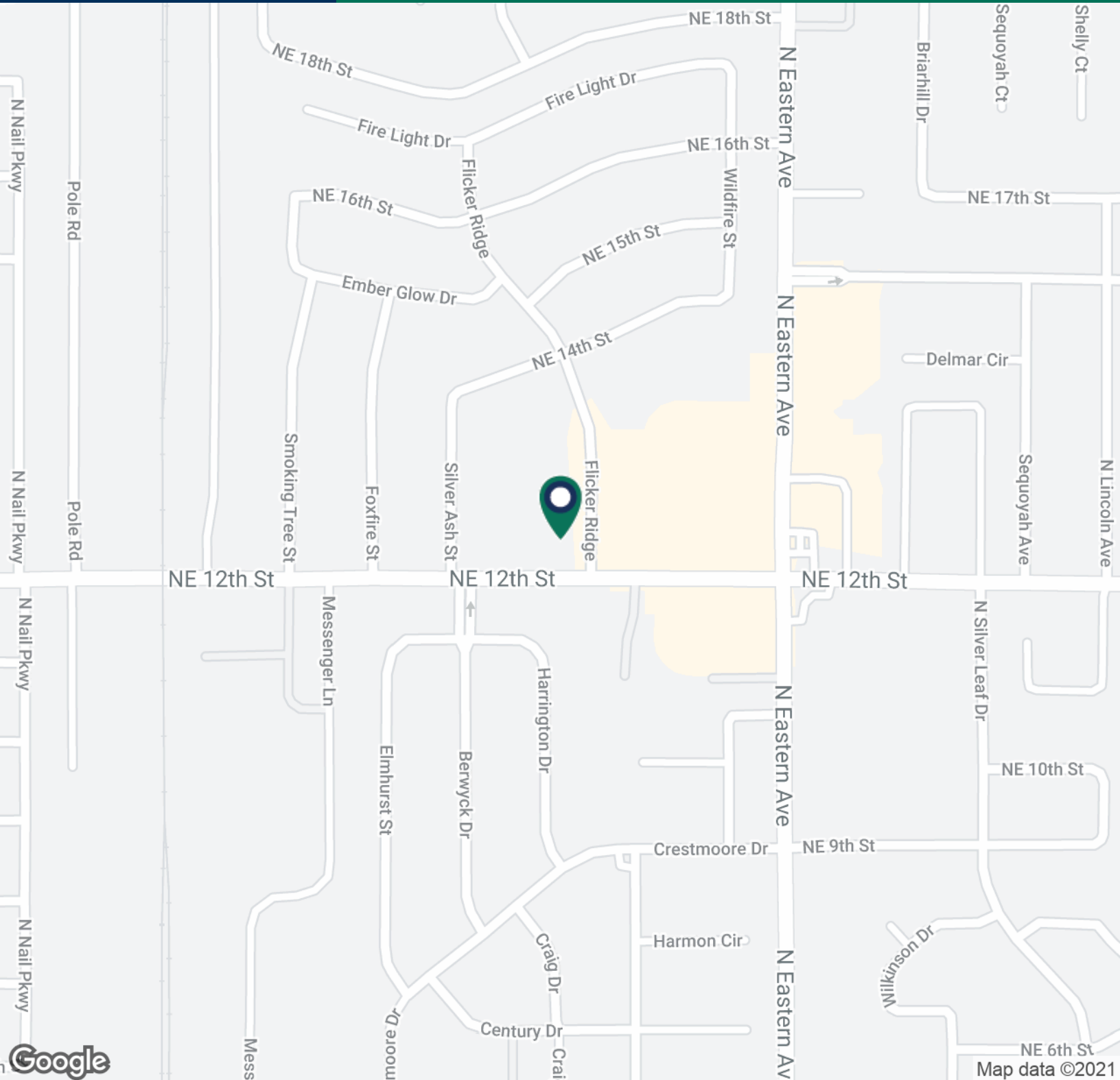


**PAUL RAVENCRAFT**  
405.239.1220  
pravencraft@pricedwards.com  
pricedwards.com

**GEORGE WILLIAMS, CCIM**  
405.239.1270  
gwilliams@pricedwards.com  
pricedwards.com

# IBC Bank Building Moore, OK

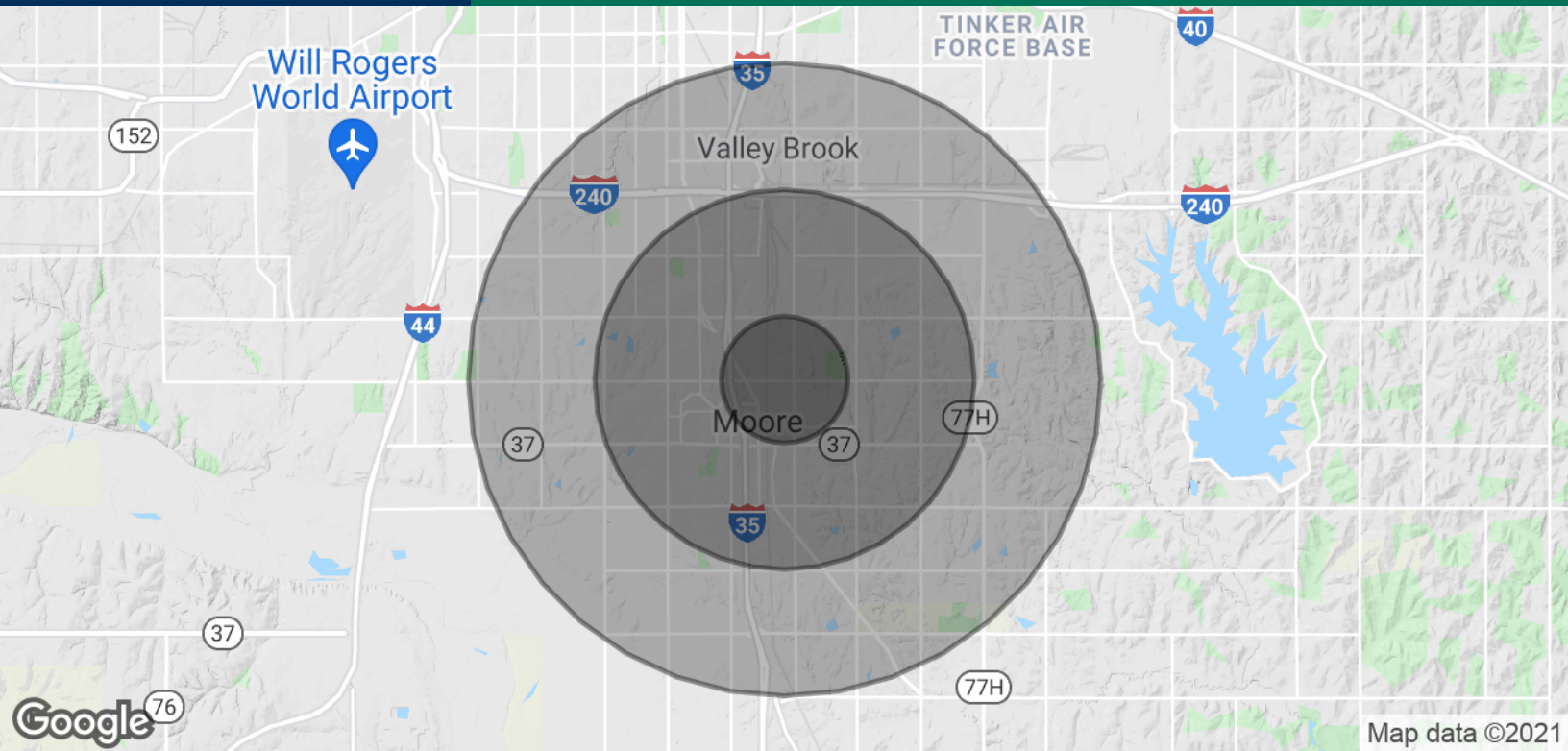
513 NE 12th Street, Moore, OK 73160



**PAUL RAVENCRAFT**  
405.239.1220  
pravencraft@pricedwards.com  
pricedwards.com

**GEORGE WILLIAMS, CCIM**  
405.239.1270  
gwilliams@pricedwards.com  
pricedwards.com





Map data ©2021

**POPULATION**

	<b>1 MILE</b>	<b>3 MILES</b>	<b>5 MILES</b>
Total Population	9,492	62,337	140,262
Average age	33.9	33.2	33.3
Average age (Male)	31.7	32.2	32.4
Average age (Female)	36.6	34.2	34.0

**HOUSEHOLDS & INCOME**

	<b>1 MILE</b>	<b>3 MILES</b>	<b>5 MILES</b>
Total households	3,465	23,499	53,203
# of persons per HH	2.7	2.7	2.6
Average HH income	\$59,066	\$61,339	\$60,935
Average house value	\$134,543	\$131,834	\$135,543

\* Demographic data derived from 2010 US Census

**PAUL RAVENCRAFT**  
405.239.1220  
pravencraft@pricedwards.com  
pricedwards.com

**GEORGE WILLIAMS, CCIM**  
405.239.1270  
gwilliams@pricedwards.com  
pricedwards.com