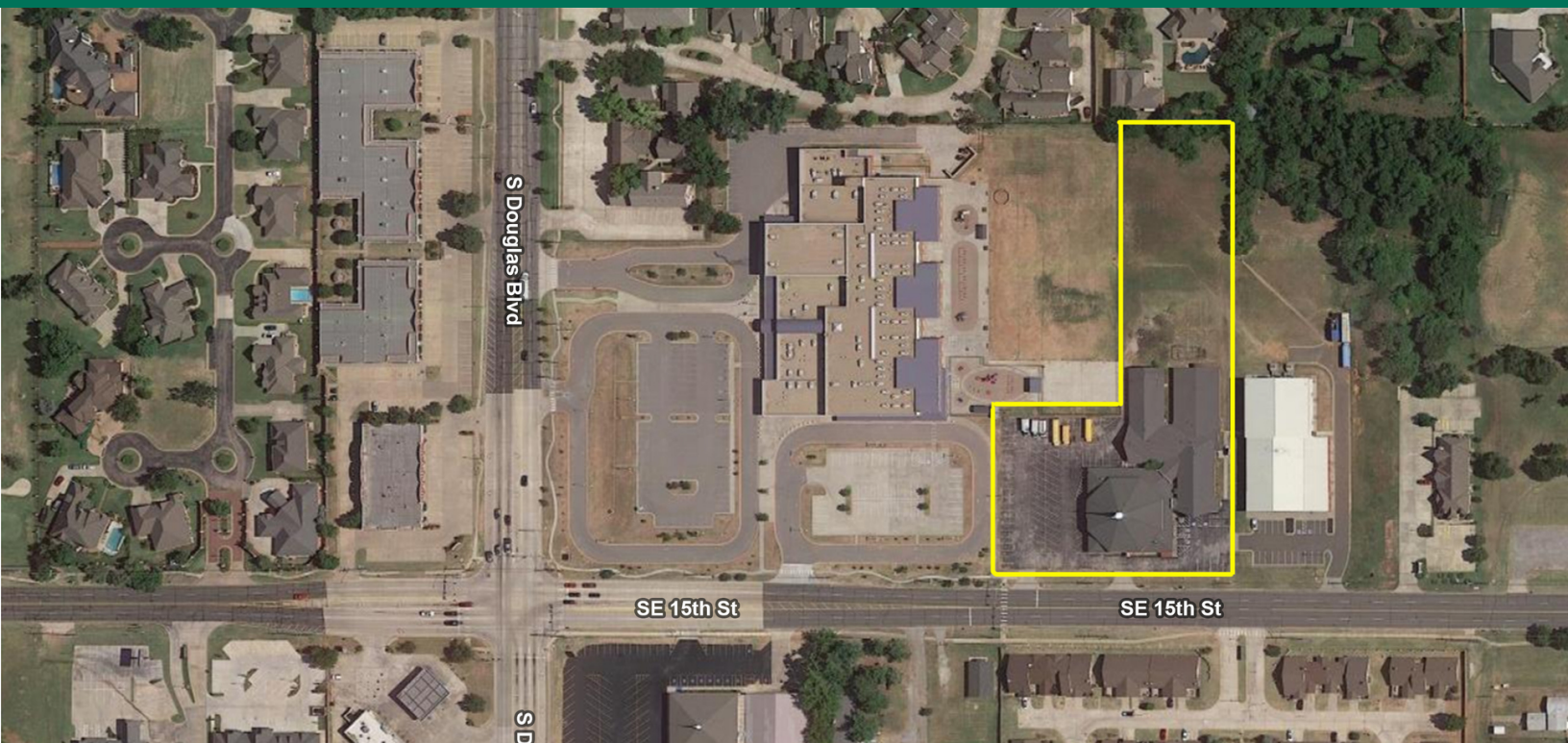


## PRIME DEVELOPMENT LAND

9125 SE 15TH MIDWEST CITY, OK 73130



### PROPERTY DESCRIPTION

2.27 acres of prime development land located near the intersection of SE 15th and S Douglas. This well-positioned property is adjacent to Soldier Creek Elementary school, making it an ideal choice for medical, office, or retail development.

### PROPERTY HIGHLIGHTS

- 2.27 Acres
- Located near the intersection of SE 15th and S Douglas
- Restaurants, office, retail and access to I-40 are all within 1 mile of the site

### OFFERING SUMMARY

<b>Sale Price:</b>	\$1,000,000
<b>Lot Size:</b>	2.27 Acres

DEMOGRAPHICS	1 MILE	3 MILES	5 MILES
<b>Total Households</b>	2,498	22,280	44,923
<b>Total Population</b>	5,367	50,381	103,928
<b>Average HH Income</b>	\$70,627	\$58,304	\$57,994

#### GEORGE WILLIAMS, CCIM

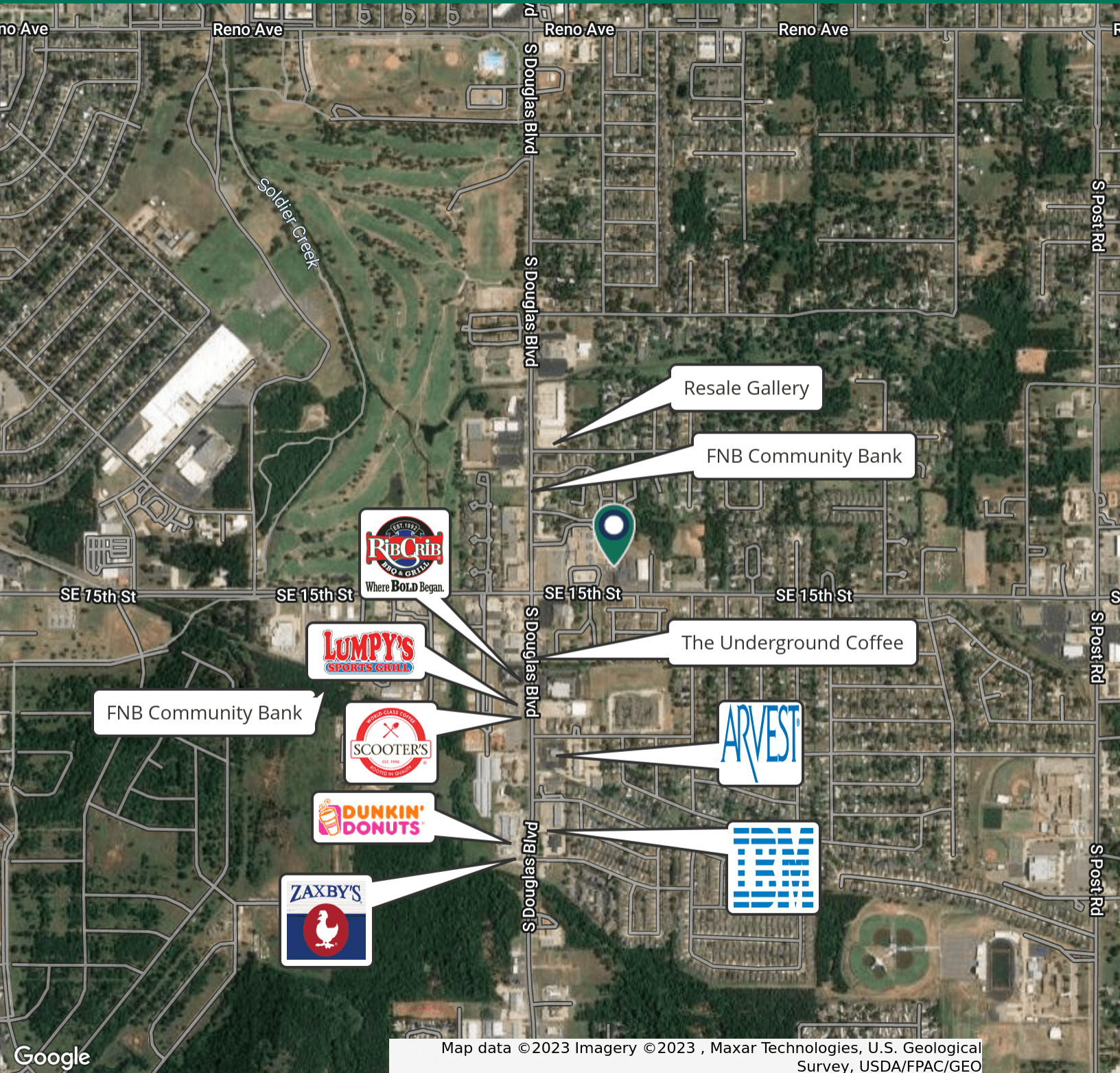
gwilliams@pricedwards.com  
O: 405.239.1270 C: 405.657.7800

#### PAUL RAVENCRAFT

pravencraft@pricedwards.com  
O: 405.239.1220 C: 405.226.5467

## PRIME DEVELOPMENT LAND

9125 SE 15TH MIDWEST CITY, OK 73130



Map data ©2023 Imagery ©2023, Maxar Technologies, U.S. Geological Survey, USDA/FPAC/GEO

**GEORGE WILLIAMS, CCIM**

gwilliams@pricedwards.com

O: 405.239.1270 C: 405.657.7800

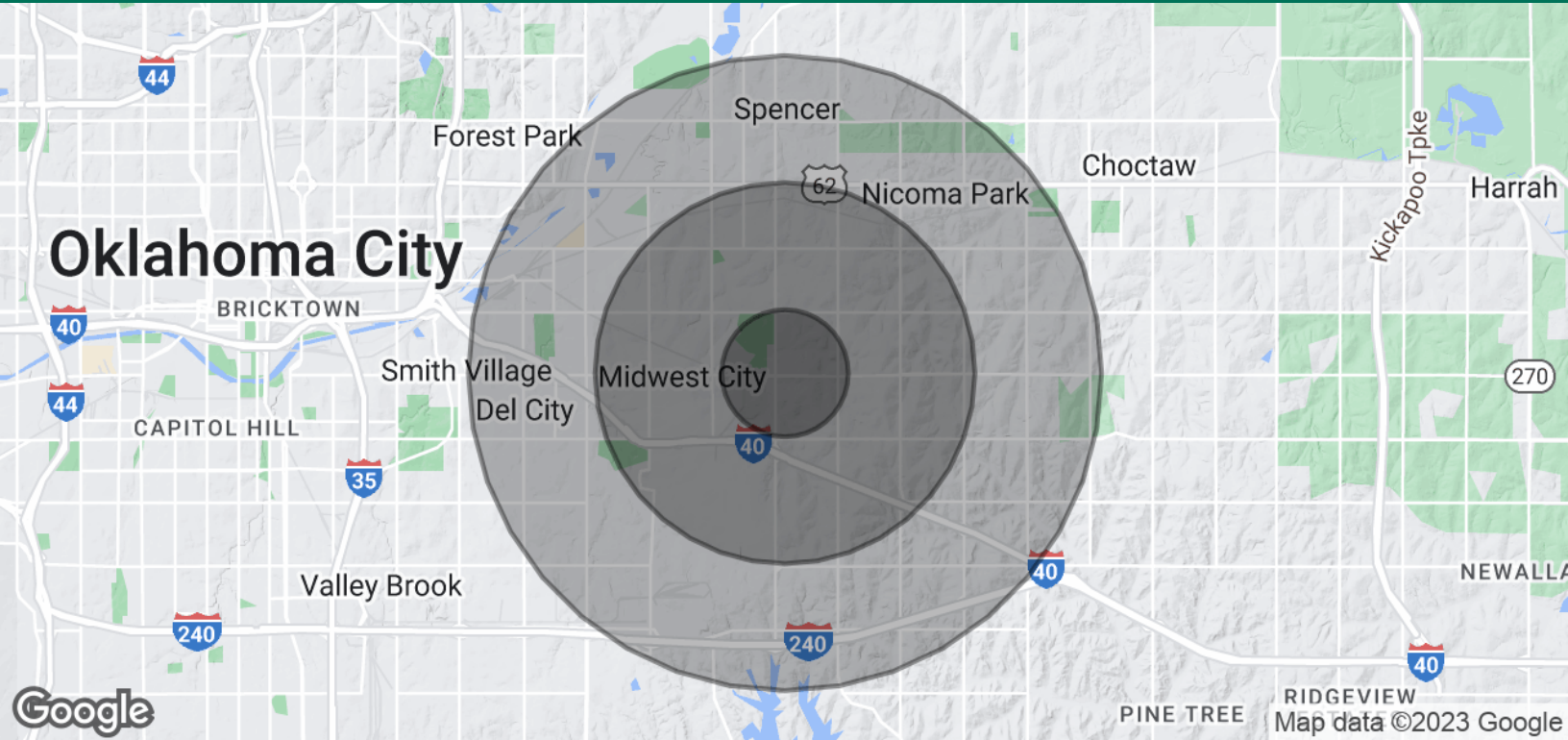
**PAUL RAVENCRAFT**

pravencraft@pricedwards.com

O: 405.239.1220 C: 405.226.5467

## PRIME DEVELOPMENT LAND

9125 SE 15TH MIDWEST CITY, OK 73130



POPULATION	1 MILE	3 MILES	5 MILES
Total Population	5,367	50,381	103,928
Average Age	40.6	38.5	37.2
Average Age (Male)	38.5	38.0	36.2
Average Age (Female)	44.8	40.8	39.6
HOUSEHOLDS & INCOME	1 MILE	3 MILES	5 MILES
Total Households	2,498	22,280	44,923
# of Persons per HH	2.1	2.3	2.3
Average HH Income	\$70,627	\$58,304	\$57,994
Average House Value	\$145,405	\$115,152	\$119,300

\* Demographic data derived from 2020 ACS - US Census

06062023

**GEORGE WILLIAMS, CCIM**

gwilliams@priceedwards.com

O: 405.239.1270 C: 405.657.7800

**PAUL RAVENCRAFT**

pravencraft@priceedwards.com

O: 405.239.1220 C: 405.226.5467