

OFFERING SUMMARY

Sale Price: \$1,700,000
Lot Size: 9.45 +/- Acres
Zoning: C-4

PROPERTY OVERVIEW

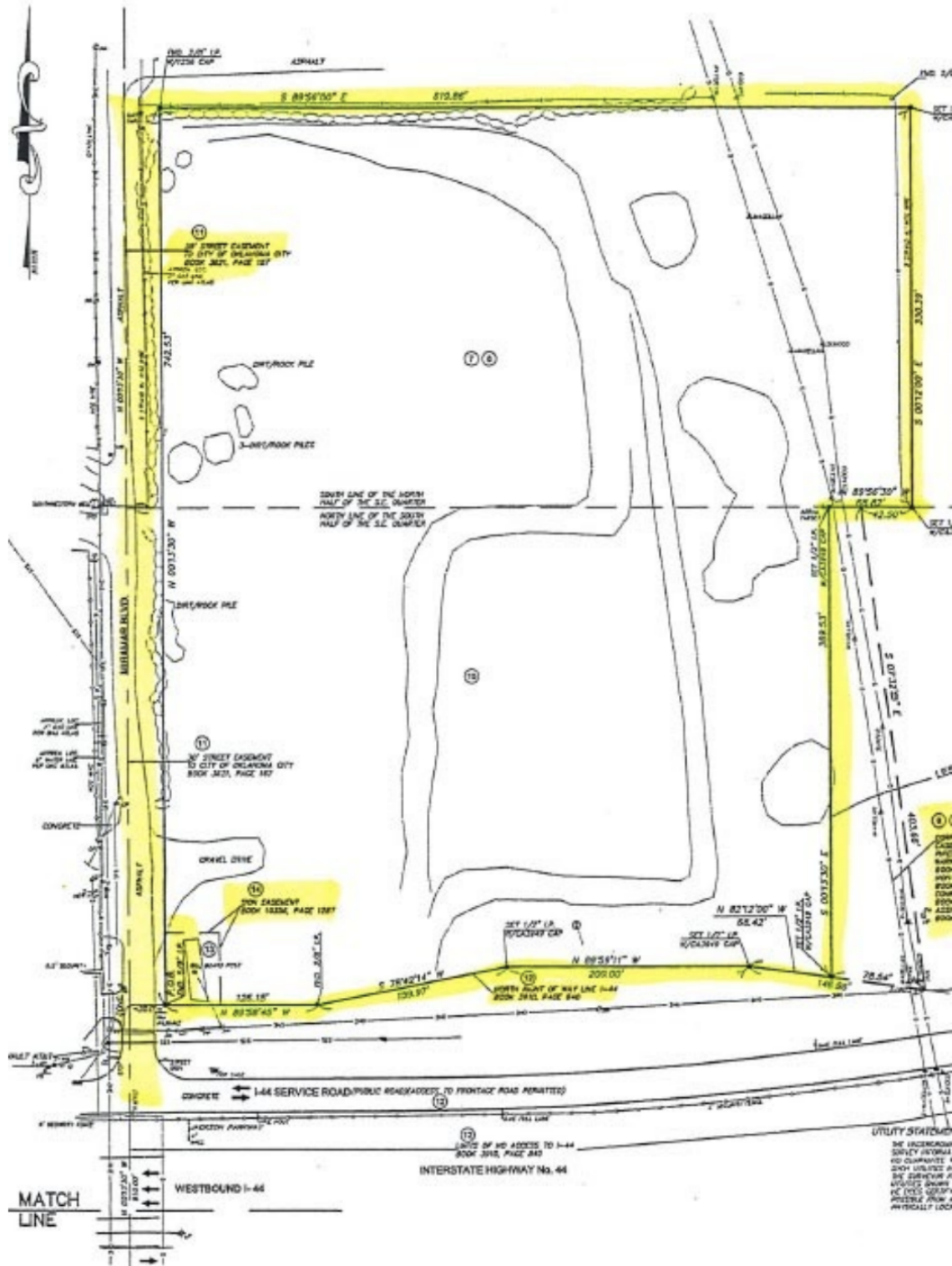
4-way access to I-44 and I-35 is one half mile west at Eastern. There is a 4-way interchange with I-35 at one mile north at Wilshire.

The next closest water and wastewater utilities north of I-44 on the west side of I-35 are approximately one mile east and north.

WATER: 8 inch Along West Boundary

SANITARY SEWER: The adjacent sewer connection would require city prohibited lift station. The owner constructed a new connection to the 8 inch line across I-44 at N.E. 63rd,

CHRIS ROBERTS
405.239.1236
croberts@pricedwards.com
pricedwards.com



CHRIS ROBERTS
405.239.1236
croberts@priceedwards.com
priceedwards.com