

E MEMORIAL LAND FOR SALE

OKLAHOMA CITY, OK 73131



PROPERTY DESCRIPTION

Price Edwards and Company is pleased to bring this excellent C-3 zoned land to the market. At 5.89+/- Acres, there are many opportunities to bring to this site. Call today for more information!

PROPERTY HIGHLIGHTS

- 5.889 +/- Acres
- C-3 Zoned
- Just off N Broadway Extension and E Memorial

OFFERING SUMMARY

Sale Price:	\$2,052,208
Zoning:	C-3
Lot Size:	5.889 Acres

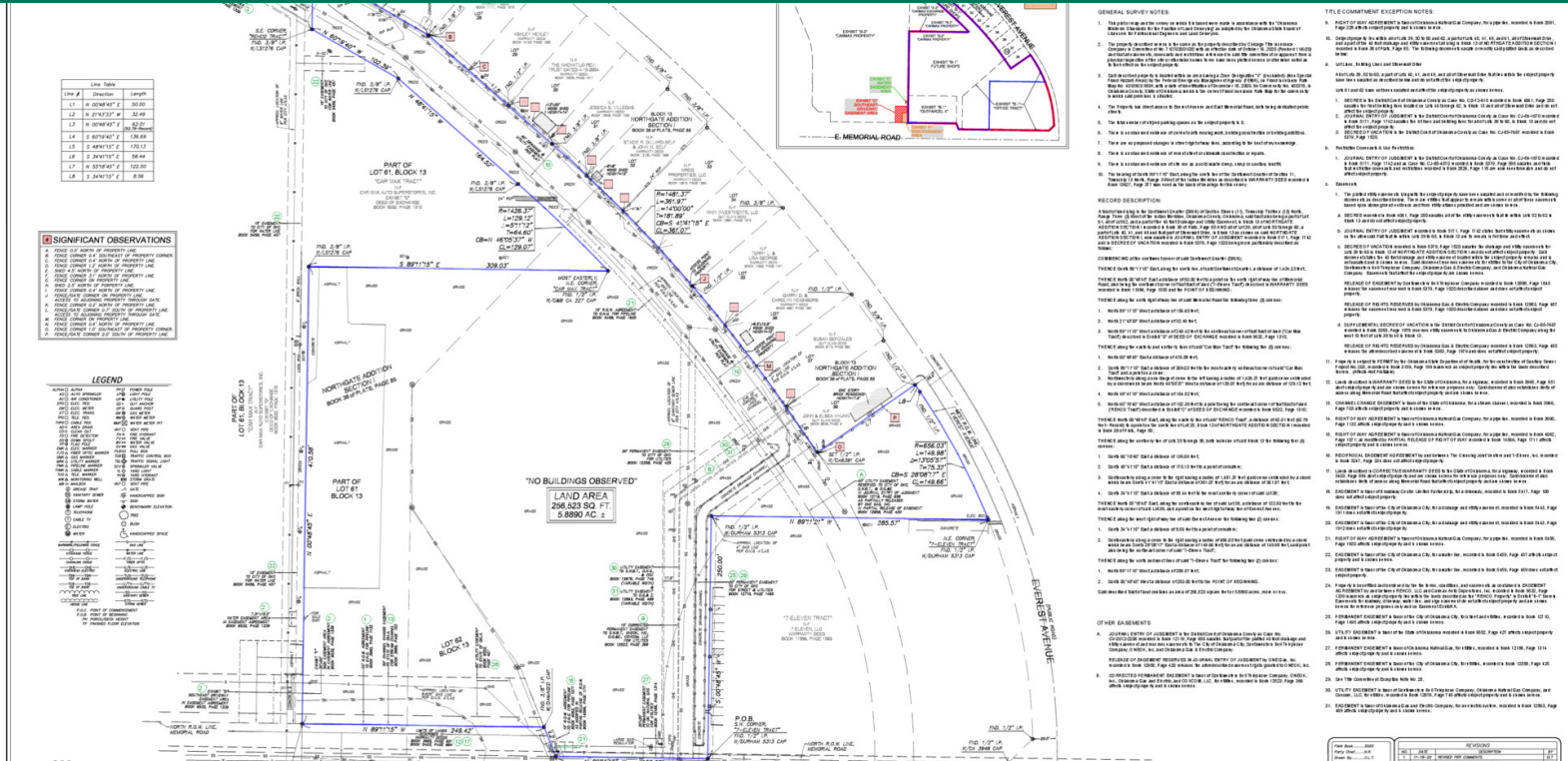
DEMOGRAPHICS	1 MILE	3 MILES	5 MILES
Total Households	2,272	21,956	70,789
Total Population	4,713	51,957	159,877
Average HH Income	\$65,769	\$85,116	\$83,282

ANDREW HOLDER

aholder@priceedwards.com
O: 580.430.5124

DANNY RIVERA

drivera@priceedwards.com
O: 405.408.5449



ANDREW HOLDER
 aholder@priceedwards.com
 O: 580.430.5124

DANNY RIVERA
 drivera@priceedwards.com
 O: 405.408.5449

PRICE EDWARDS
 AND COMPANY