

8801 NE 23RD STREET

8801 NORTHEAST 23RD STREET SPENCER, OK 73084



OFFERING SUMMARY

Sale Price:	\$175,000
Lot Size:	41,310 SF
Building Size:	2,064 SF

PROPERTY HIGHLIGHTS

- 2,064 SF Single-Story Building
- High-Visibility Frontage along NE 23rd Street
- Flexible Commercial Zoning
- Close Proximity to Midwest City

LOCATION DESCRIPTION

This property enjoys a visible location along NE 23rd Street in the Spencer area of northeast Oklahoma City, offering steady daily traffic and convenient access to local thoroughfares. Surrounded by a mix of small retail, residential, and light commercial uses, the site benefits from a diverse neighborhood setting. Its nearly one-acre lot provides ample space for parking, storage, or future expansion. Proximity to Midwest City and ongoing development efforts in the Spencer corridor support the property's long-term commercial viability.

TRE DUPUY

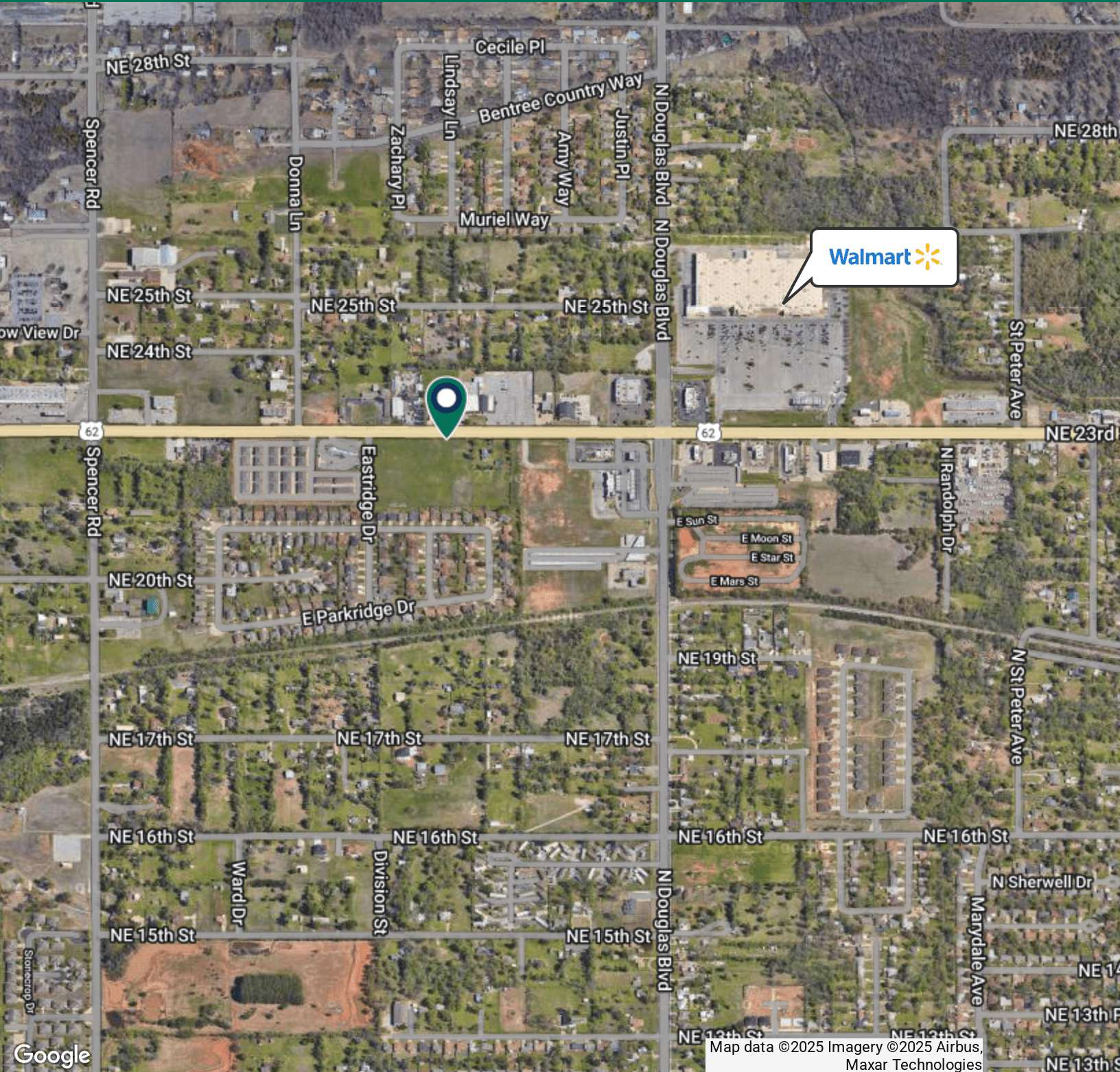
tdupuy@priceedwards.com
O: 405.239.1210 C: 405.412.3810

IAN SELF

iself@priceedwards.com
O: 405.239.1271

8801 NE 23RD STREET

8801 NORTHEAST 23RD STREET SPENCER, OK 73084



TRE DUPUY

tdupuy@priceedwards.com
O: 405.239.1210 C: 405.412.3810

IAN SELF

iself@priceedwards.com
O: 405.239.1271