

4420 E I-240 SERVICE ROAD

OKLAHOMA CITY, OK 73135



## 360° VIRTUAL TOUR

### PROPERTY DESCRIPTION

This 5,100 SF property offers a prime location near I-240 and Sunnyslane, ideal for businesses seeking high visibility and easy access to major highways, Tinker AFB, or the hospital. Perfect for oil & gas professionals, home builders, and healthcare-related businesses, it features a versatile layout with a reception area, multiple office suites, conference rooms, and a unique bedroom/shower combination upstairs. This accessible and functional space is tailored for fast-paced professionals in Oklahoma City, ensuring a perfect blend of convenience and efficiency.

### PROPERTY HIGHLIGHTS

- Prime location off I-240 and near Tinker AFB
- Versatile layout with conference rooms, private offices, as well as space for cubicles
- High visibility

#### IAN SELF

iself@priceedwards.com  
O: 405.239.1271

#### AARON DIEHL

adiehl@priceedwards.com  
O: 405.651.3308

### OFFERING SUMMARY

<b>Sale Price:</b>	\$1,020,000
<b>Building Size:</b>	5,100 SF
<b>Year Built:</b>	2007
<b>Lot Size:</b>	1.26 Acres

4420 E I-240 SERVICE ROAD

OKLAHOMA CITY, OK 73135



Kitchen



Conference room



Lobby



Private office



Open working area



Private office



Private office

**IAN SELF**

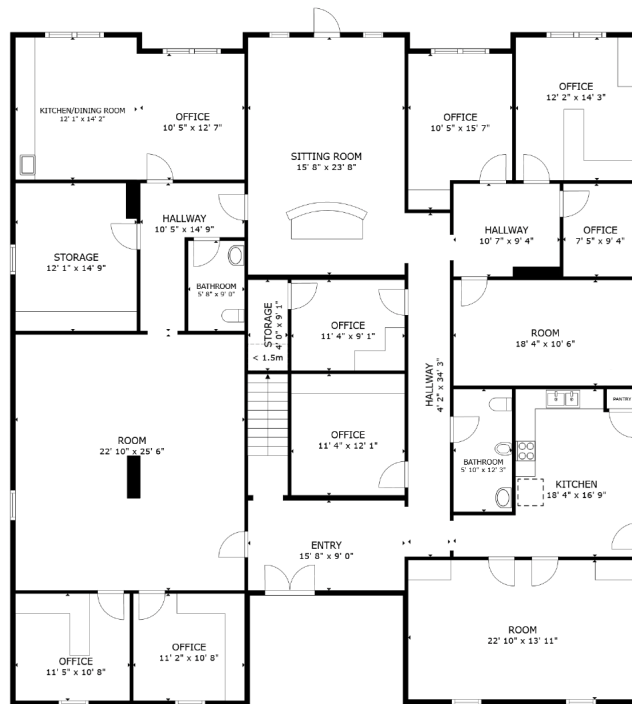
iself@priceedwards.com  
O: 405.239.1271

**AARON DIEHL**

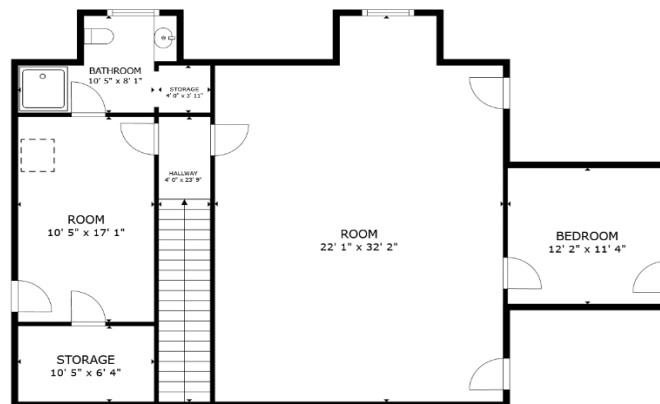
adiehl@priceedwards.com  
O: 405.651.3308

4420 E I-240 SERVICE ROAD

OKLAHOMA CITY, OK 73135



FLOOR 1



FLOOR 2

**IAN SELF**

iself@priceedwards.com  
O: 405.239.1271

**AARON DIEHL**

adiehl@priceedwards.com  
O: 405.651.3308