

# 125 PARK AVENUE - LOWER LEVEL SUITE

125 Park Avenue, Oklahoma City, OK 73102



## OFFERING SUMMARY

Sale Price: \$550,000

Building Size: 5,000

Market: Downtown

Price / SF: \$110.00

022119

## PROPERTY OVERVIEW

This 5,000 sf suite is available for sale. The owner is asking \$110 per square foot for this luxurious downtown office space.

The building is accompanied by VI Marketing & Branding, Coyle Law Firm, and Martin Law Office.

## PROPERTY HIGHLIGHTS

- Located in an Opportunity Zone
- Located in the heart of Downtown Oklahoma City
- Within walking distance to many restaurants, major attractions and venues
- Excellent access to Interstate 40, Interstate 235 and Interstate 35

### JACOB SIMON

Retail Specialist

jsimon@priceedwards.com

405.843.7474

210 Park Ave, Suite 700, Oklahoma City, OK 73102

priceedwards.com

### GIRMA MOANING

Retail Investment Specialist

gmoaning@priceedwards.com

405.843.7474

210 Park Ave, Suite 700, Oklahoma City, OK 73102

priceedwards.com

# 125 PARK AVENUE - LOWER LEVEL SUITE

125 Park Ave, Oklahoma City, OK 73102 - FOR SALE



## JACOB SIMON

Retail Specialist

[jsimon@priceedwards.com](mailto:jsimon@priceedwards.com)

405.843.7474

210 Park Ave, Suite 700, Oklahoma City, OK 73102

[priceedwards.com](http://priceedwards.com)

## GIRMA MOANING

Retail Investment Specialist

[gmoaning@priceedwards.com](mailto:gmoaning@priceedwards.com)

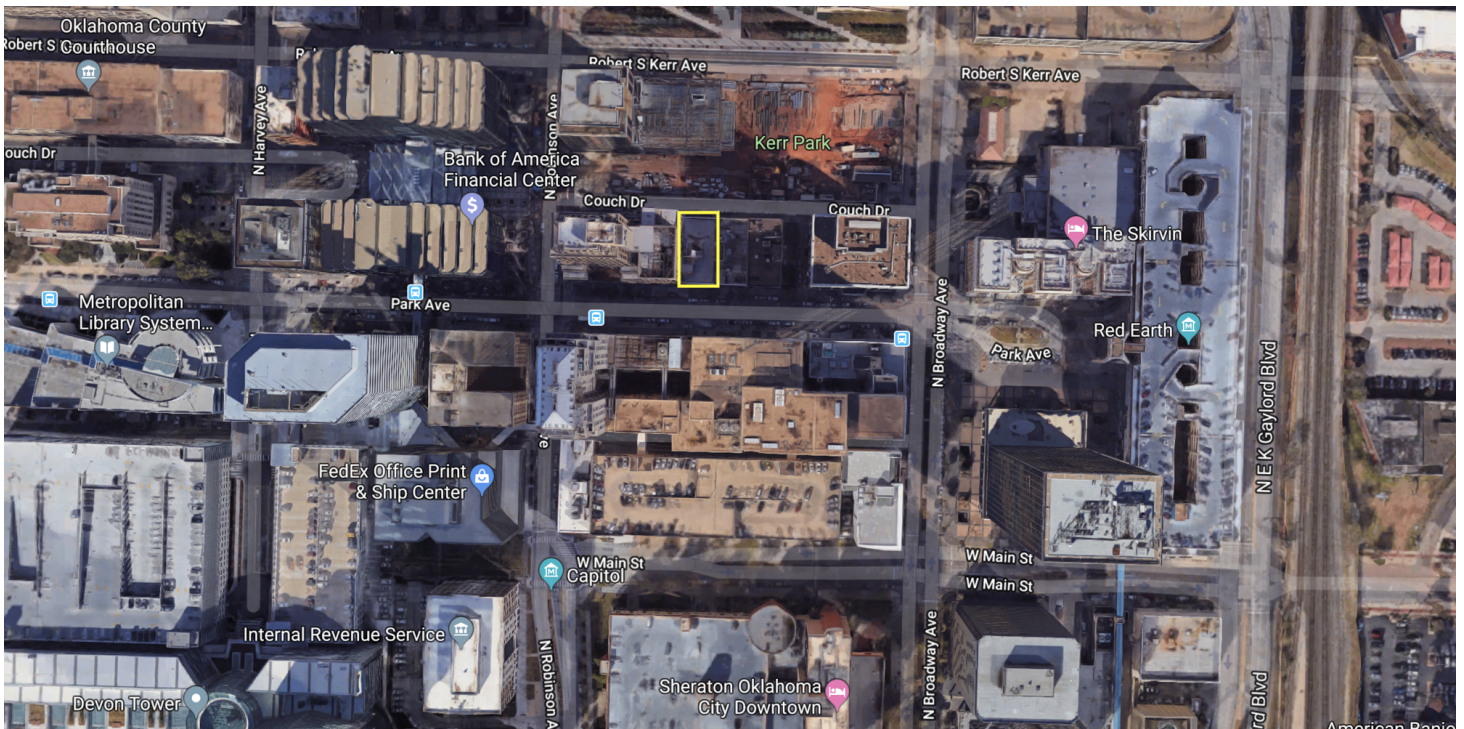
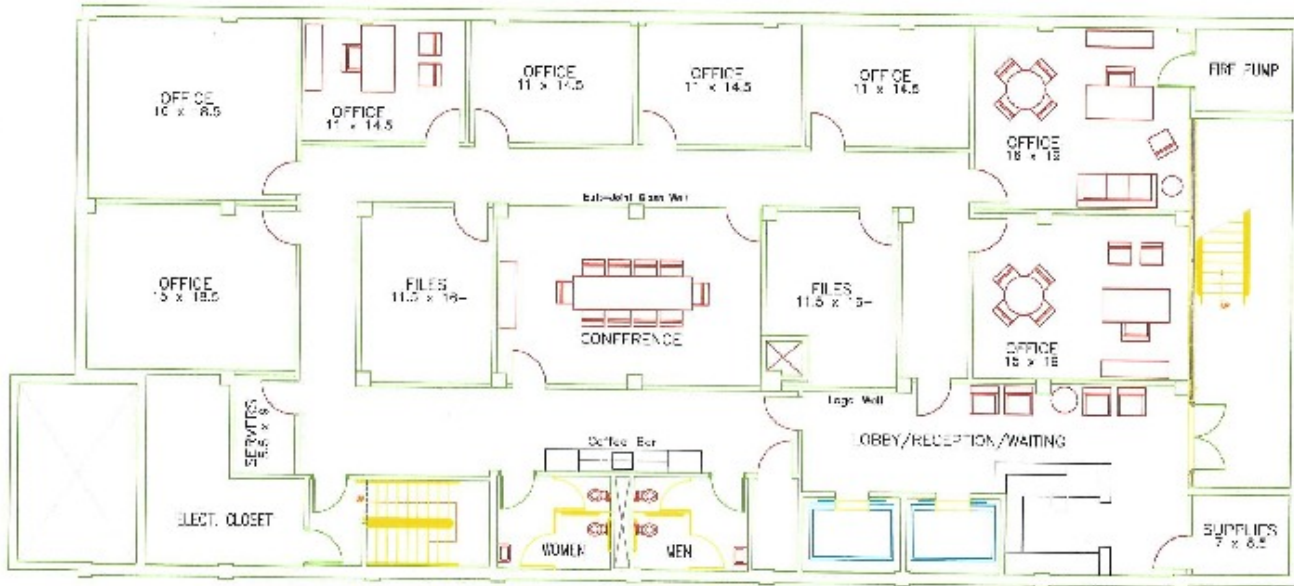
405.843.7474

210 Park Ave, Suite 700, Oklahoma City, OK 73102

[priceedwards.com](http://priceedwards.com)

# 125 PARK AVENUE - LOWER LEVEL SUITE

125 Park Ave, Oklahoma City, OK 73102 - FOR SALE



## JACOB SIMON

Retail Specialist

[jsimon@priceedwards.com](mailto:jsimon@priceedwards.com)

405.843.7474

210 Park Ave, Suite 700, Oklahoma City, OK 73102

[priceedwards.com](http://priceedwards.com)

## GIRMA MOANING

Retail Investment Specialist

[gmoaning@priceedwards.com](mailto:gmoaning@priceedwards.com)

405.843.7474

210 Park Ave, Suite 700, Oklahoma City, OK 73102

[priceedwards.com](http://priceedwards.com)

# 125 PARK AVENUE - LOWER LEVEL SUITE

## Demographics Map & Report



<b>POPULATION</b>	<b>1 MILE</b>	<b>5 MILES</b>	<b>10 MILES</b>
Total population	4,614	204,574	637,884
Median age	33.8	32.9	34.0
Median age (Male)	35.1	32.5	33.0
Median age (Female)	32.5	33.4	35.1
<b>HOUSEHOLDS &amp; INCOME</b>	<b>1 MILE</b>	<b>5 MILES</b>	<b>10 MILES</b>
Total households	2,052	79,345	255,928
# of persons per HH	2.2	2.6	2.5
Average HH income	\$39,829	\$42,448	\$52,824
Average house value	\$293,824	\$119,505	\$138,278

\* Demographic data derived from 2010 US Census

### JACOB SIMON

Retail Specialist  
 jsimon@priceedwards.com  
 405.843.7474  
 210 Park Ave, Suite 700, Oklahoma City, OK 73102  
 priceedwards.com

### GIRMA MOANING

Retail Investment Specialist  
 gmoaning@priceedwards.com  
 405.843.7474  
 210 Park Ave, Suite 700, Oklahoma City, OK 73102  
 priceedwards.com