



**OFFERING SUMMARY**

Total Sales Price: \$275,000.00  
\$3.50 psf

Land: 1.81 AC  
79,067 SF

Zoning: PUD-627

**LOCATION OVERVIEW**

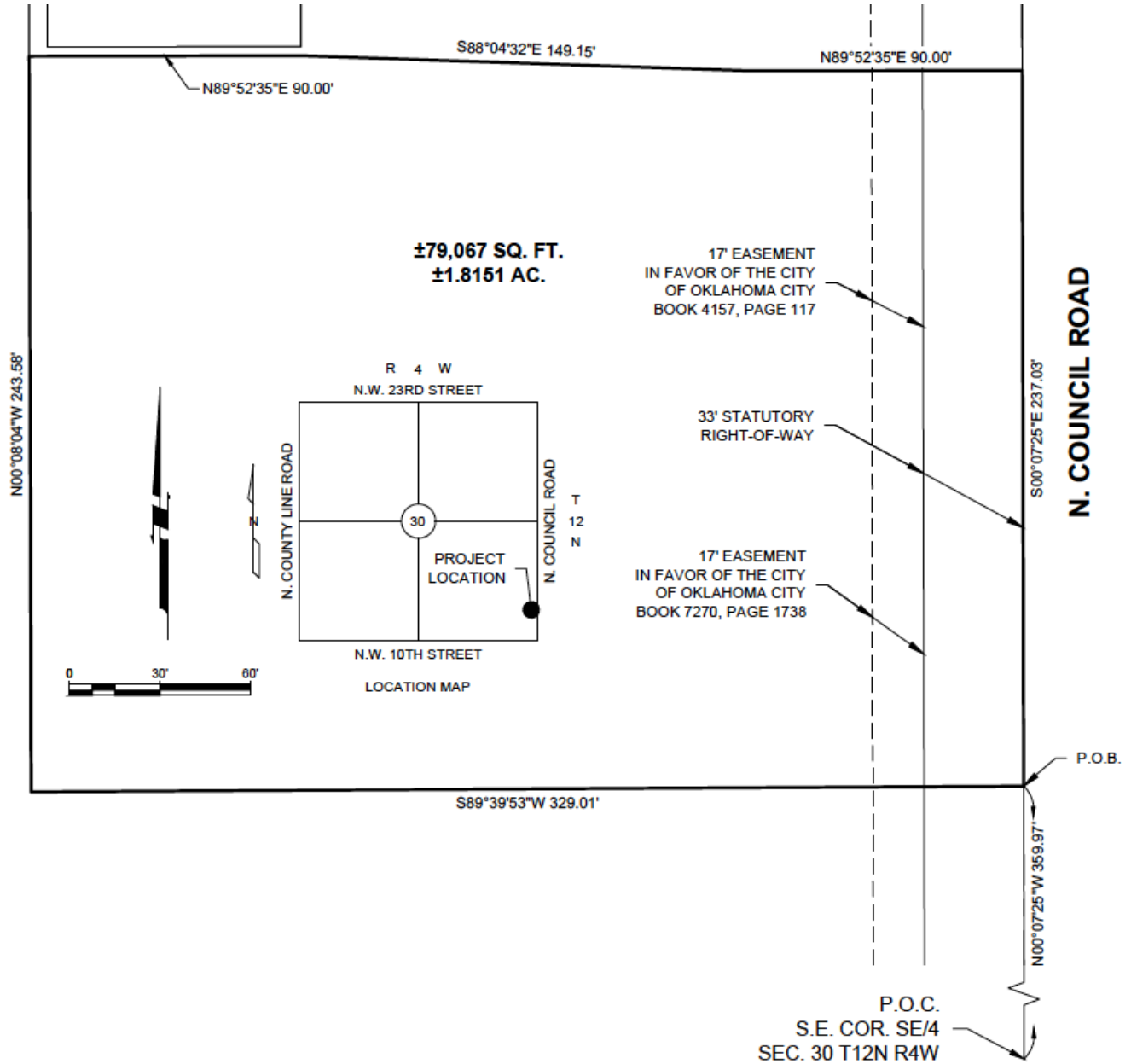
Located just north of the NW 10th and Council Road intersection on the west side of the road.

**PROPERTY HIGHLIGHTS**

- 237 ft of Council Road frontage
- Development ready
- Commercial/ Flex/ Industrial
- Easy access to I-40

**CHRIS ROBERTS**  
405.239.1236  
croberts@pricedwards.com  
pricedwards.com

**JACOB SIMON**  
405.239.1248  
jsimon@pricedwards.com  
pricedwards.com



**CHRIS ROBERTS**  
405.239.1236  
croberts@priceedwards.com  
priceedwards.com

**JACOB SIMON**  
405.239.1248  
jsimon@priceedwards.com  
priceedwards.com