



OFFERING SUMMARY

Sale Price:	\$999,750
Lot Size:	± 29.25 Acres
Price / Acre:	\$34,179

LOCATION OVERVIEW

Located off East Memorial Road just west of Midwest Blvd. Less than one mile from I-35.

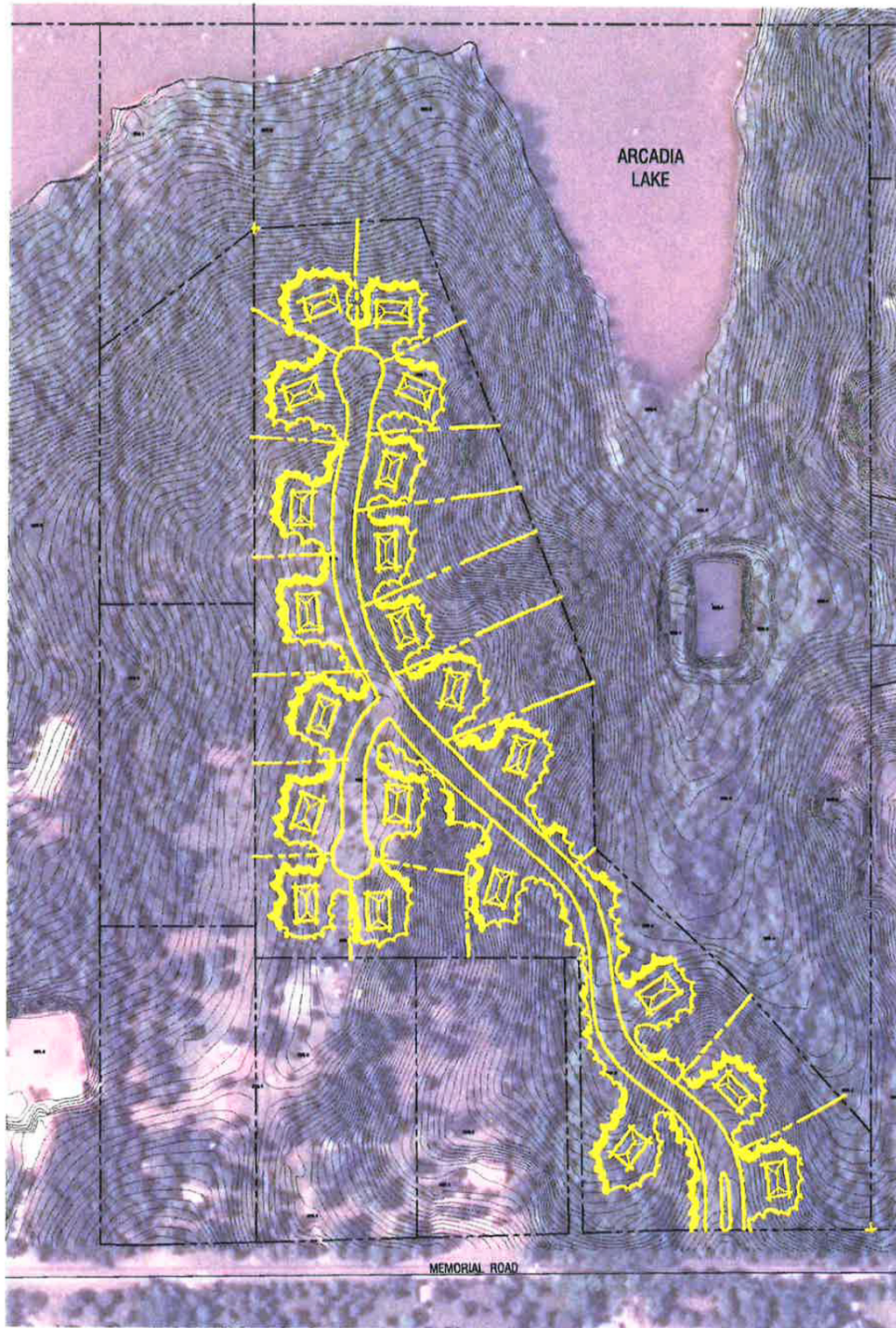
PROPERTY HIGHLIGHTS

- Oklahoma City Limits
- Edmond Schools
- Zoned Agriculture
- Utilities nearby
- Suitable for twenty-one 1+ acre lots

TOM FIELDS
405.239.1205
tfields@pricedwards.com
pricedwards.com

± 29.25 Acres For Sale

Memorial Road and Midwest Blvd., Edmond, OK 73013



TOM FIELDS
405.239.1205
tfields@priceedwards.com
priceedwards.com