

THE SHOPPES ON BROADWAY - PAD SITE

3224 S BROADWAY, EDMOND, OK 73013



PROPERTY DESCRIPTION

Pad C is available For Ground Lease or Build To Suit or For Sale | 1.22 Acres

Located in the heart of Edmond at the intersection of 33rd Street & Broadway, this upscale center is a shopping destination with premier Tenants.

Edmond's finest mixed use development; premier retail space.

OFFERING SUMMARY

Sale Price:	Subject To Offer
Lease Rate:	Negotiable
Available SF:	53,214 SF
Building Size:	125,295 SF
	02042025

DEMOGRAPHICS	1 MILE	3 MILES	5 MILES
Total Households	3,536	23,720	50,608
Total Population	9,798	61,630	130,051
Average HH Income	\$62,392	\$70,774	\$80,061

EV ERNST

eernst@priceedwards.com
O: 405.843.7474

GEORGE WILLIAMS, CCIM

gwilliams@priceedwards.com
O: 405.239.1270 C: 405.657.7800

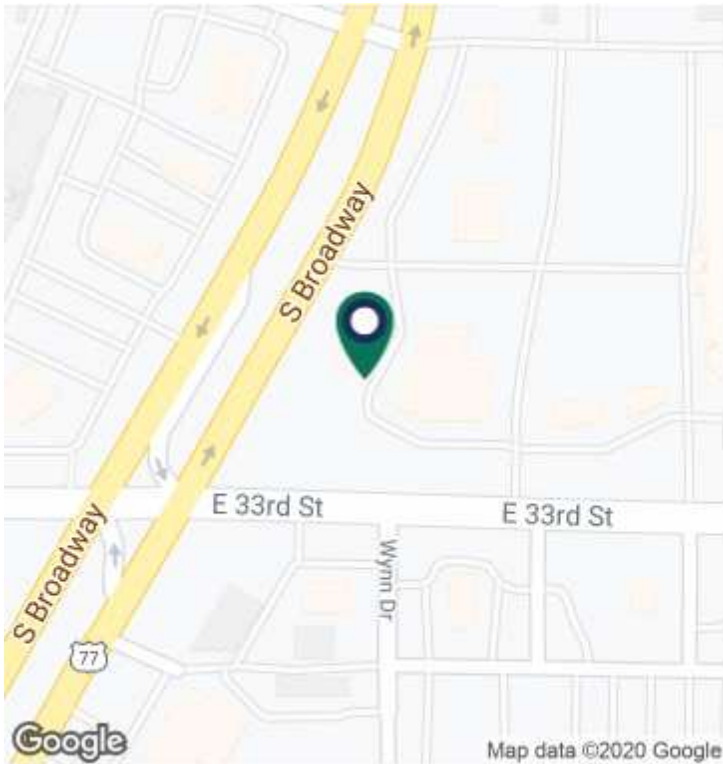
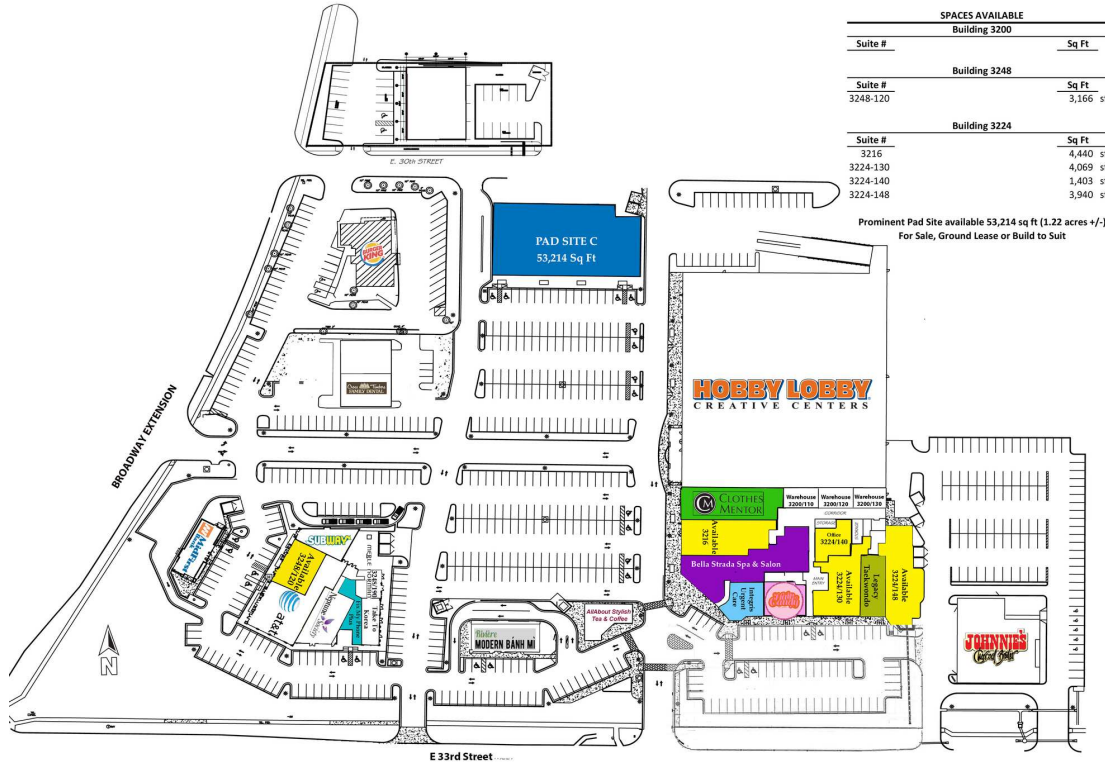
JACOB SIMON

jsimon@priceedwards.com
O: 405.239.1248

PRICE EDWARDS AND CO. FOR SALE | GROUND LEASE

THE SHOPPES ON BROADWAY - PAD SITE

3224 S BROADWAY, EDMOND, OK 73013



EV ERNST

ernst@priceedwards.com
O: 405.843.7474

GEORGE WILLIAMS, CCIM

gwilliams@priceedwards.com
O: 405.239.1270 C: 405.657.7800

JACOB SIMON

jsimon@priceedwards.com
O: 405.239.1248