

# SHOPPES AT QUAIL SPRINGS

13601 N. May Ave. Oklahoma City, OK 73120



## OFFERING SUMMARY

Available SF:	1,502 - 2,814 SF
Retail SF:	1,502 SF - 2,814 SF
Office SF:	2,000-10,000SF
Lease Rate:	Negotiable
Lease Type:	NNN
Submarket:	North
Cross Streets:	N May & W Memorial Rd 01142020

## GEORGE WILLIAMS, CCIM

Retail Investment Specialist  
 gwilliams@pricedwards.com  
 405.239.1270  
 210 Park Ave, Suite 700, Oklahoma City, OK 73102  
 pricedwards.com

## PROPERTY OVERVIEW

Shoppes at Quail Springs is a 73,000 square foot, two story, multi-tenant retail-office center located at May Ave. and Kilpatrick Turnpike; one of the busiest intersections in the corridor. This intersection serves as a main entry and exit hub for Quail Springs Mall traffic.

## LOCATION OVERVIEW

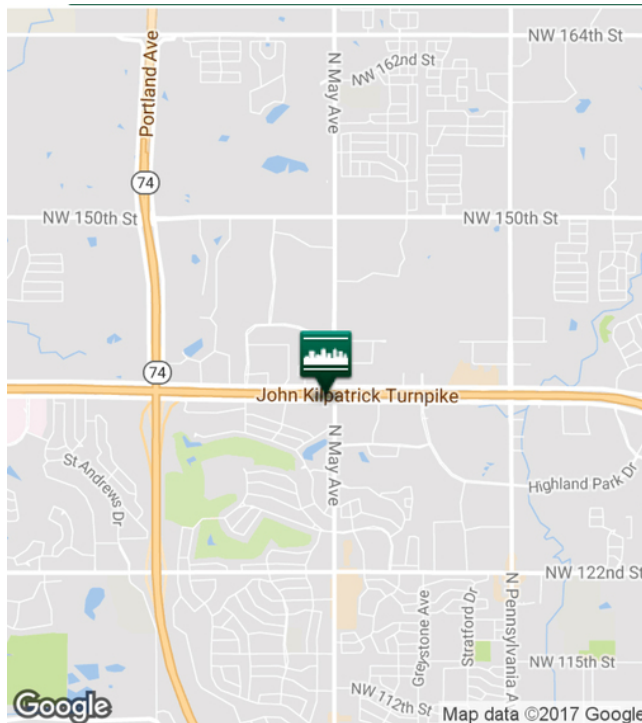
The Memorial Corridor is a magnet for corporate business, containing over 1.5 million square feet of office space, with over half being Class A properties. A vast medical office community is anchored by some of the most advanced hospitals in the region (show images of the large hospitals and make sure logos can be read, then show smaller medical offices in the area) The businesses in the corridor are supported by over 12 hundred hotel rooms and suites. New big box retailers in the area include Von Maur and Dick's Sporting Goods. Cattycorner to the Shoppes at Quail Springs is a Barnes & Noble Book Store.

## AVAILABLE SPACES

SPACE	LEASE RATE	SIZE (SF)
Suite 105 - North May Ave. & West Memorial Road	Negotiable	1,976 SF
Suite 115 - North May Ave. & West Memorial Road	Negotiable	1,502 SF
Suite 124-125 - North May Ave. & West Memorial Road	Negotiable	2,814 SF

# SHOPPES AT QUAIL SPRINGS

13601 N. May Ave. Oklahoma City, OK 73120



## DEMOGRAPHICS (per 2010 Census; 5 Miles Radius)

Total Population	142,785
Population Density	142,785
Median Age	36.5
Median Age (Male)	34.8
Median Age (Female)	37.6
Total Households	61,166
# of Persons Per HH	2.3
Average HH Income	\$82,356
Average House Value	\$205,228

## TRAFFIC COUNTS (per ACOG)

N May Ave	north	25,134
N May Ave	south	21,022
W Memorial Rd	east	23,118
W Memorial Rd	west	22,220
Kilpatrick Turnpike	east	69,404
Kilpatrick Turnpike	west	70,826

## GEORGE WILLIAMS, CCIM

Retail Investment Specialist  
gwilliams@priceedwards.com

405.239.1270

210 Park Ave, Suite 700, Oklahoma City, OK 73102

priceedwards.com



# SHOPPES AT QUAIL SPRINGS

13601 N. May Ave. Oklahoma City, OK 73120



## GEORGE WILLIAMS, CCIM

Retail Investment Specialist  
gwilliams@pricedwards.com

405.239.1270

210 Park Ave, Suite 700, Oklahoma City, OK 73102

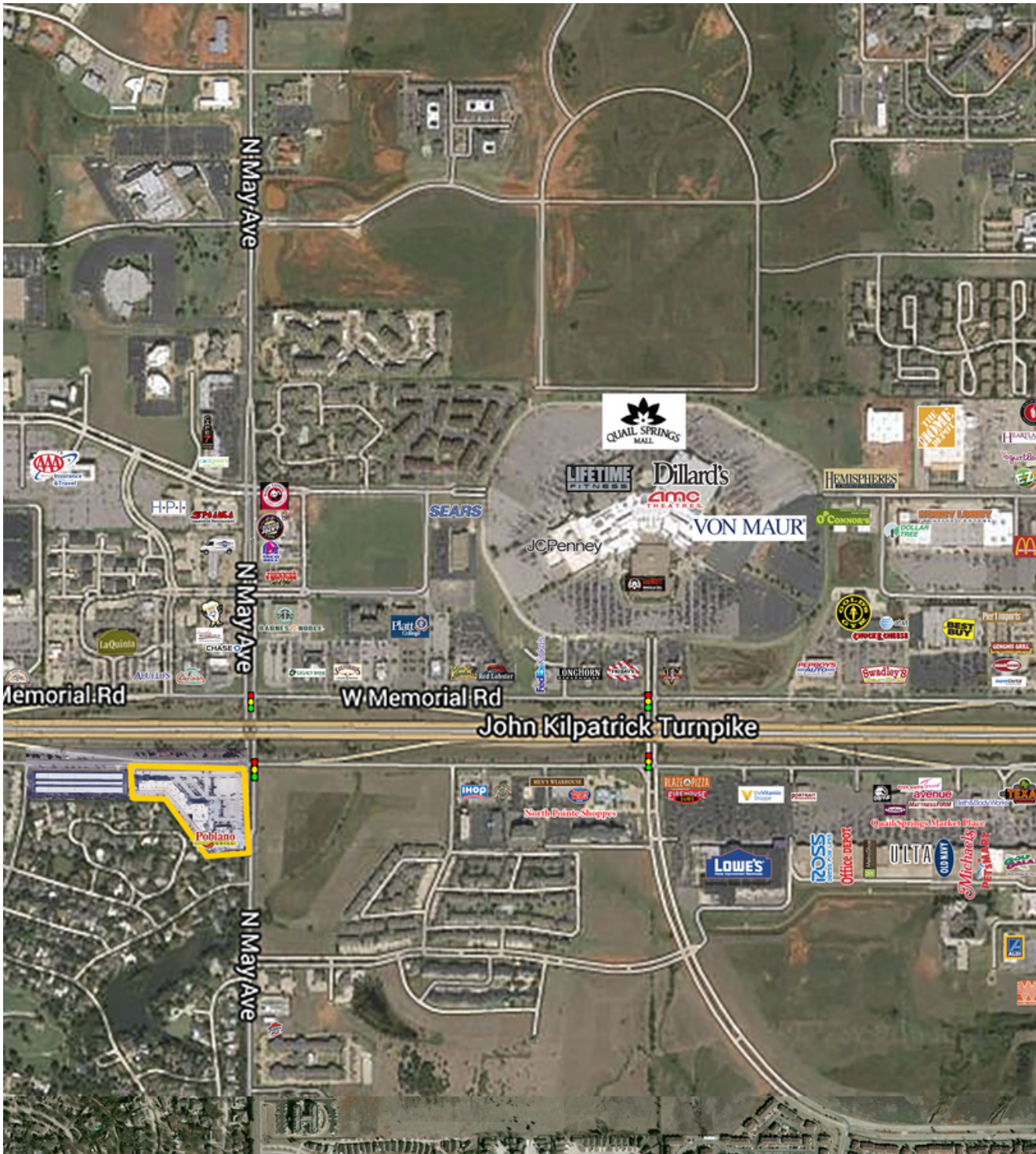
pricedwards.com

The information above has been obtained from sources believe reliable. While we do not doubt its accuracy, we have not verified it and make no guarantee, warranty, or representation about it. You and your legal and technical advisors should conduct a careful, independent investigation of the property to determine to your satisfaction to the suitability of the property for your needs.



# SHOPPES AT QUAIL SPRINGS

11360 N May Ave, Oklahoma City, OK 73120



**GEORGE WILLIAMS, CCIM**

Retail Investment Specialist  
gwilliams@priceedwards.com

405.239.1270

210 Park Ave, Suite 700, Oklahoma City, OK 73102

priceedwards.com

The information above has been obtained from sources believe reliable. While we do not doubt its accuracy, we have not verified it and make no guarantee, warranty, or representation about it. You and your legal and technical advisors should conduct a careful, independent investigation of the property to determine to your satisfaction to the suitability of the property for your needs.