

14000 QUAIL SPRINGS PARKWAY

OKLAHOMA CITY, OK 73134



PROPERTY DESCRIPTION

Parking:

1,113 total spaces

1,025 surface spaces (free)

88 covered garage spaces (monthly rate)

Security:

Staffed after-hours with on-site personnel 7 days per week. 16 cameras monitor all entrances and parking lots. After-hours access is available to tenants via Security PasKey card readers.

Amenities:

Full service restaurant with vending area
Numerous hotels, shops and restaurants nearby
On-site management office
Loading Dock
Covered Parking
Fitness Facility

LOCATION DESCRIPTION

Located between May Avenue and the Lake Hefner Parkway just north of Memorial Road and the Kilpatrick Turnpike.

OFFERING SUMMARY

For Sublease

Suite 2300: ±2,834 - 3,912 RSF

Lease Rate: \$18.50 SF/yr (Full Service)

**Primary lease expires
July 31, 2029**

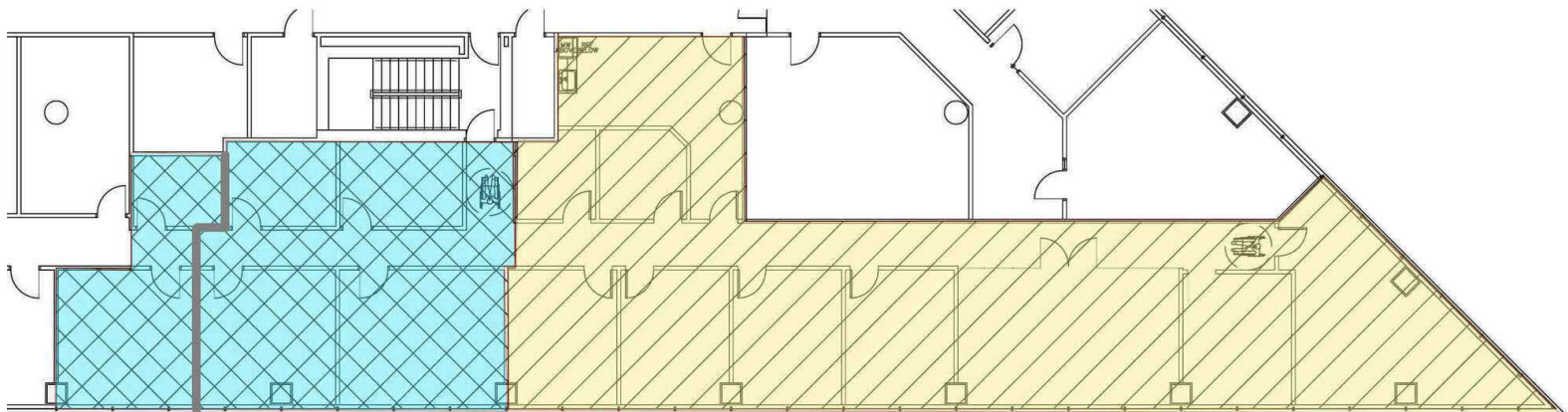
CRAIG TUCKER

ctucker@priceedwards.com

O: 405.239.1202 C: 405.641.3218

14000 QUAIL SPRINGS PARKWAY

OKLAHOMA CITY, OK 73134



1,078 RSF
Possible Additional
Excess Space

2,834 RSF
Excess
Space

CRAIG TUCKER

ctucker@priceedwards.com
O: 405.239.1202 C: 405.641.3218