

PLAZA COURT OFFICES

1100 N Classen Drive, Oklahoma City, OK 73106



OFFICE SPACE NOW AVAILABLE

Available SF:	3,454 SF
Lease Rate:	18.00 SF/yr (NNN)
Lot Size:	1.0 Acres
Building Size:	38,501 SF
Building Class:	B
Year Built:	1927
Renovated:	2007
Market:	Central Business District
Sub Market:	Midtown
Cross Streets:	NW 10th & Walker

LEASE OVERVIEW

Three to five year agreement, triple net lease with pro-rata share of building electric and janitorial. A large number of on-street parking is available with free surface parking for employees across the street to the east.

LOCATION OVERVIEW

Midtown is a trendy, walkable district north of downtown Oklahoma City. Along with creative, hip office spaces, the area is known for an eclectic group of gastropubs, micro-breweries, rat pack style cocktail lounges and german-style beer halls. There always seems to be something trending in Midtown. In the Plaza Court Building, along with a beautiful office you will find a full services YMCA, McNelly's Irish Pub, a yoga studio and an optical shop. The Ambassador Hotel to the east and numerous apartment complexes in the immediate area make this an ideal location to live, work and play.

For more information please contact:

C. DEREK JAMES

djames@priceedwards.com
405.239.1206



1100 N Classen Drive Oklahoma City, OK 73106

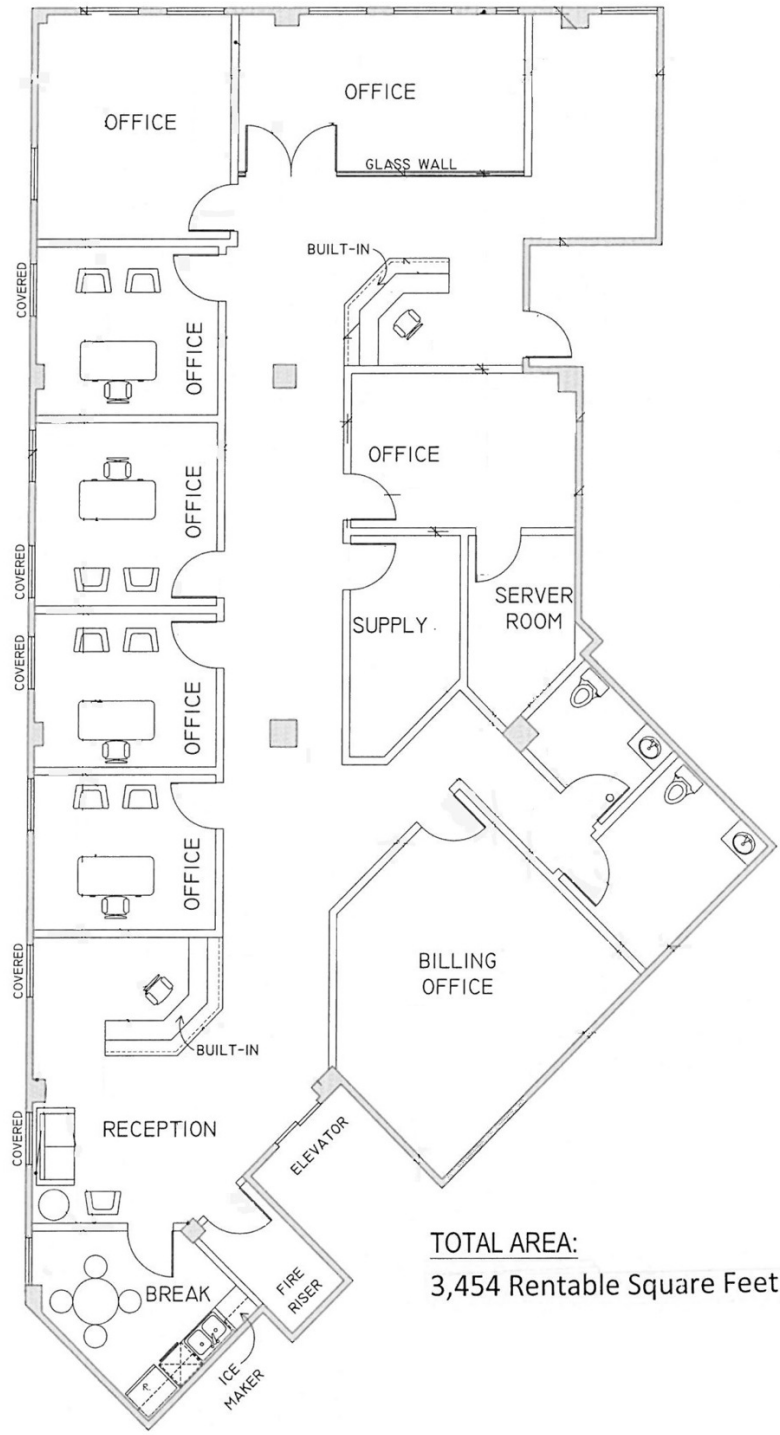


1100 N Classen Drive Oklahoma City, OK 73106



Plaza Court - Mezzanine

1100 N Classen Drive, Oklahoma City, OK 73106



TOTAL AREA:
3,454 Rentable Square Feet