

# 4801 GAILLARDIA PARKWAY

Oklahoma City, Oklahoma



## LEASE DETAILS

Available SF: 346 - 13,715 SF

Lease Rate: \$24.00/SF/YR

Lease Type: Full Service Gross

Building Size: 74,432

Market: Memorial Corridor

## PROPERTY OVERVIEW

4801 Gaillardia is designed to complement the Normandy style of the adjacent Gaillardia Country Club. The lower portions of the building are clad in natural stone. The use of full-height glass and punched windows give the exterior a multi-dimensional presence. The interior is highlighted by a two-story atrium lobby featuring granite floors and walls clad in travertine and dark natural woods which repeat in the upper floor elevator lobbies. The building avails the tenant with views of the golf course on three of its four sides.

## PROPERTY HIGHLIGHTS

- Close to numerous restaurants and shopping centers
- 9' ceilings
- Fiber-optic communications
- On-site building engineer
- Golf Course views

## TRE DUPUY

Office Specialist  
tdupuy@priceedwards.com  
405.843.7474  
210 Park Ave, Suite 700, Oklahoma City, OK 73102  
priceedwards.com

## CRAIG TUCKER

ctucker@priceedwards.com  
405.843.7474  
210 Park Ave, Suite 700, Oklahoma City, OK 73102  
priceedwards.com

# 4801 GAILLARDIA PARKWAY

Available Spaces



SUITE	TENANT	SIZE (SF)	LEASE TYPE	LEASE RATE
Suite 180	Available	346 SF	Full Service	\$24.00 SF/yr
Suite 250	Available	13,715 SF	Full Service	\$24.00 SF/yr

## TRE DUPUY

Office Specialist

[tdupuy@priceedwards.com](mailto:tdupuy@priceedwards.com)

405.843.7474

210 Park Ave, Suite 700, Oklahoma City, OK 73102

[priceedwards.com](http://priceedwards.com)

## CRAIG TUCKER

[ctucker@priceedwards.com](mailto:ctucker@priceedwards.com)

405.843.7474

210 Park Ave, Suite 700, Oklahoma City, OK 73102

[priceedwards.com](http://priceedwards.com)

# 4801 GAILLARDIA PARKWAY

Floor Plans - Suites 150 & 160



Suite 180  
346 RSF

	LE NORMAN PROPERTIES		4801 Gaillardia Parkway
	4801 GAILLARDIA PARKWAY		Suite 170
PROJECT No. 1307		Oklahoma City	
DATE: 9.12.2013		Oklahoma 73142	
		V 405.562.7330	

## TRE DUPUY

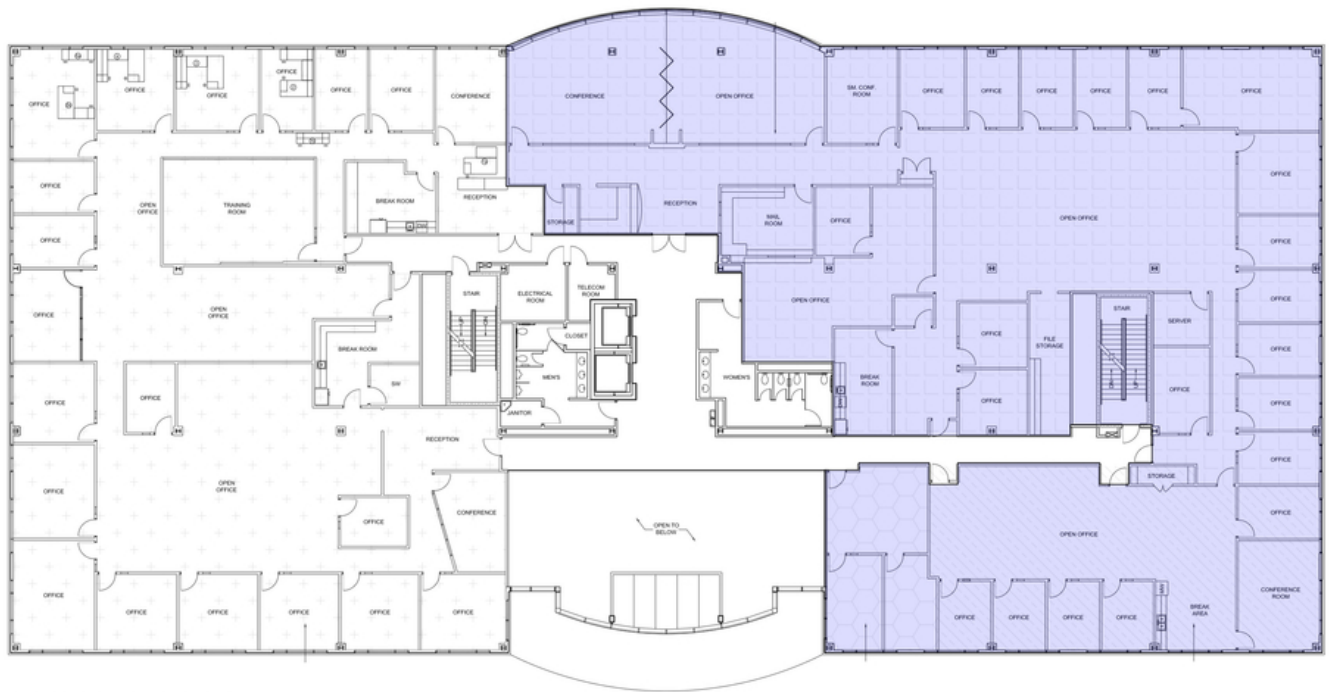
Office Specialist  
tdupuy@priceedwards.com  
405.843.7474  
210 Park Ave, Suite 700, Oklahoma City, OK 73102  
priceedwards.com

## CRAIG TUCKER

ctucker@priceedwards.com  
405.843.7474  
210 Park Ave, Suite 700, Oklahoma City, OK 73102  
priceedwards.com

# 4801 GAILLARDIA PARKWAY

Floor Plan - Suite 250



2 SECOND FLOOR PLAN  
Scale: 1/8" = 1'

## TRE DUPUY

Office Specialist  
tdupuy@priceedwards.com  
405.843.7474  
210 Park Ave, Suite 700, Oklahoma City, OK 73102  
priceedwards.com

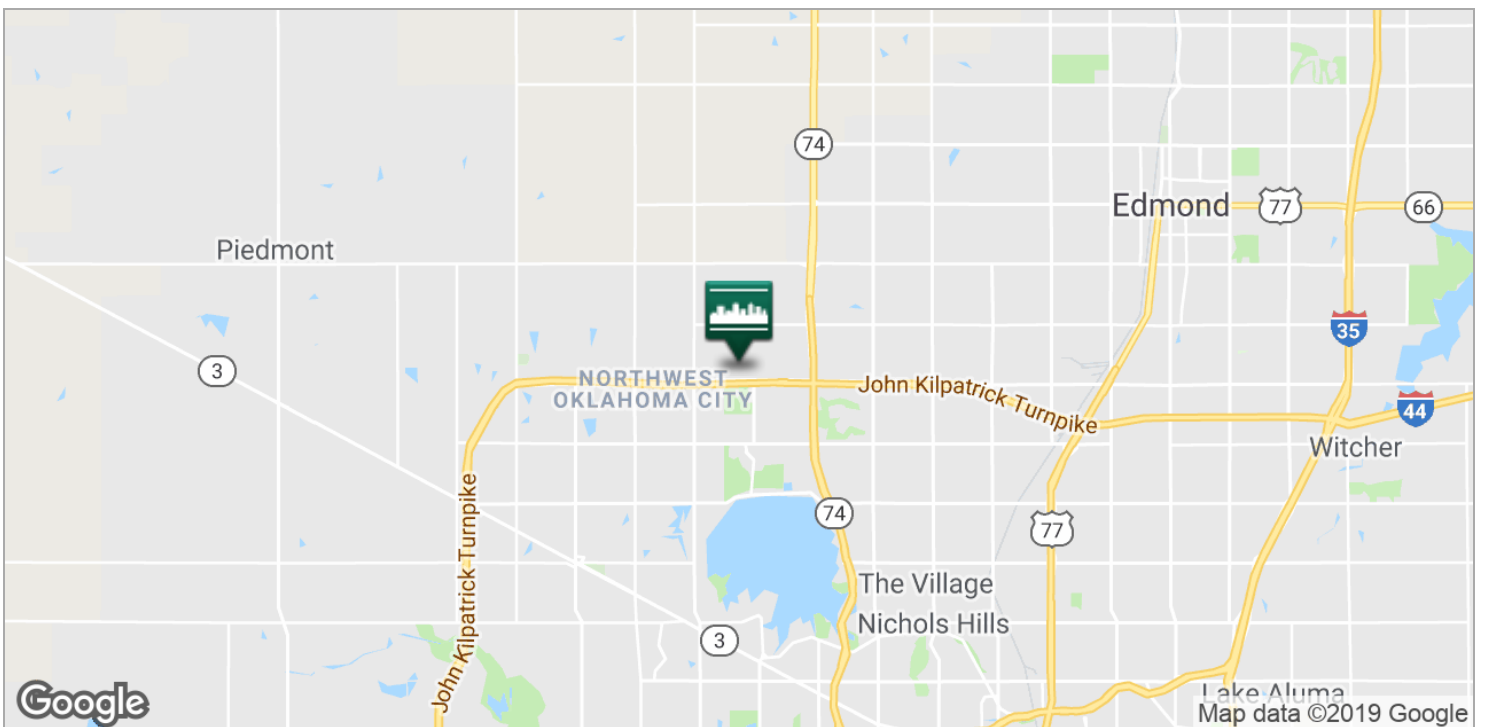
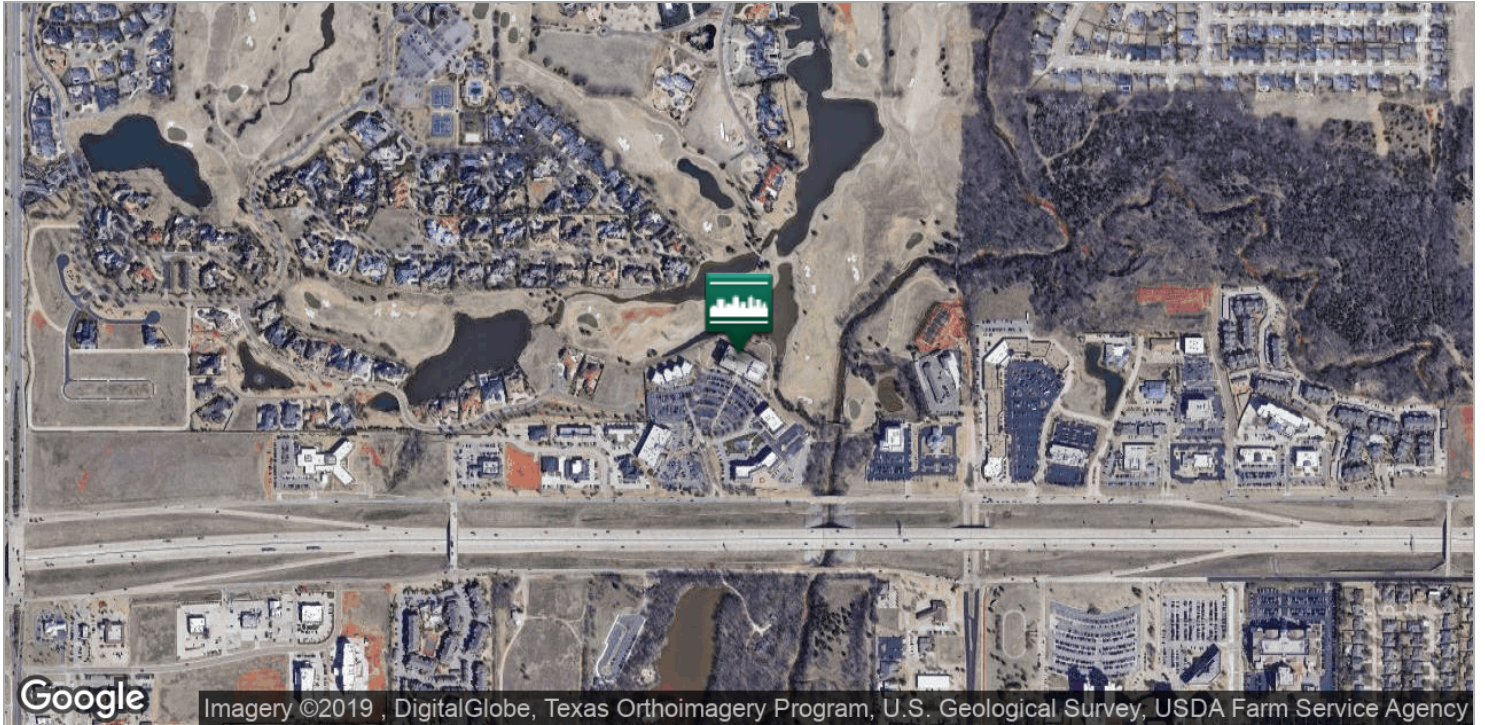
## CRAIG TUCKER

ctucker@priceedwards.com  
405.843.7474  
210 Park Ave, Suite 700, Oklahoma City, OK 73102  
priceedwards.com

*The information above has been obtained from sources believe reliable. While we do not doubt its accuracy, we have not verified it and make no guarantee, warranty, or representation about it. You and your legal and technical advisors should conduct a careful, independent investigation of the property to determine to your satisfaction to the suitability of the property for your needs.*

# 4801 GAILLARDIA PARKWAY

Location Maps



## TRE DUPUY

Office Specialist

[tdupuy@priceedwards.com](mailto:tdupuy@priceedwards.com)

405.843.7474

210 Park Ave, Suite 700, Oklahoma City, OK 73102

[priceedwards.com](http://priceedwards.com)

## CRAIG TUCKER

[ctucker@priceedwards.com](mailto:ctucker@priceedwards.com)

405.843.7474

210 Park Ave, Suite 700, Oklahoma City, OK 73102

[priceedwards.com](http://priceedwards.com)