

13500 SOUTH TULSA DRIVE

## ST. ANTHONY SOUTH HEALTHPLEX



### OFFERING SUMMARY

**Available SF:** 2,091 - 5,406 SF

**Lease Rate:** Negotiable

**Lease Type:** Full Service

**Year Built:** 2012

**Building Size:** 52,000 SF

### PROPERTY OVERVIEW

The St. Anthony South Healthplex is conveniently located at the intersection of I-44 and SW 134th. The exterior of the building is accented with natural stacked stone, and floor to ceiling windows, providing an abundance of natural light throughout the interior of the building. A state of the art pneumatic tube system was thoughtfully positioned throughout the building providing all physicians with controlled access to the full range of laboratory services located on the first floor.

### LOCATION OVERVIEW

Located at the intersection of I-44 and SW 134th Street.

For more information please contact:

**TRE DUPUY**

tdupuy@priceedwards.com  
405.843.7474

**CRAIG TUCKER**

ctucker@priceedwards.com  
405.843.7474

ST. ANTHONY SOUTH HEALTHPLEX

AVAILABLE SPACES

**LEASE TYPE** | Full Service

**TOTAL SPACE** | 2,091 - 5,406 SF

**LEASE TERM** | Negotiable

**LEASE RATE** | Negotiable



SUITE	TENANT	SIZE (SF)	LEASE TYPE	LEASE RATE	DESCRIPTION
302	Available	5,406 SF	Full Service	Negotiable	-
307	Available	2,091 SF	Full Service	Negotiable	-
306	Available	2,193 SF	Full Service	Negotiable	Fully equipped, rent ready suite

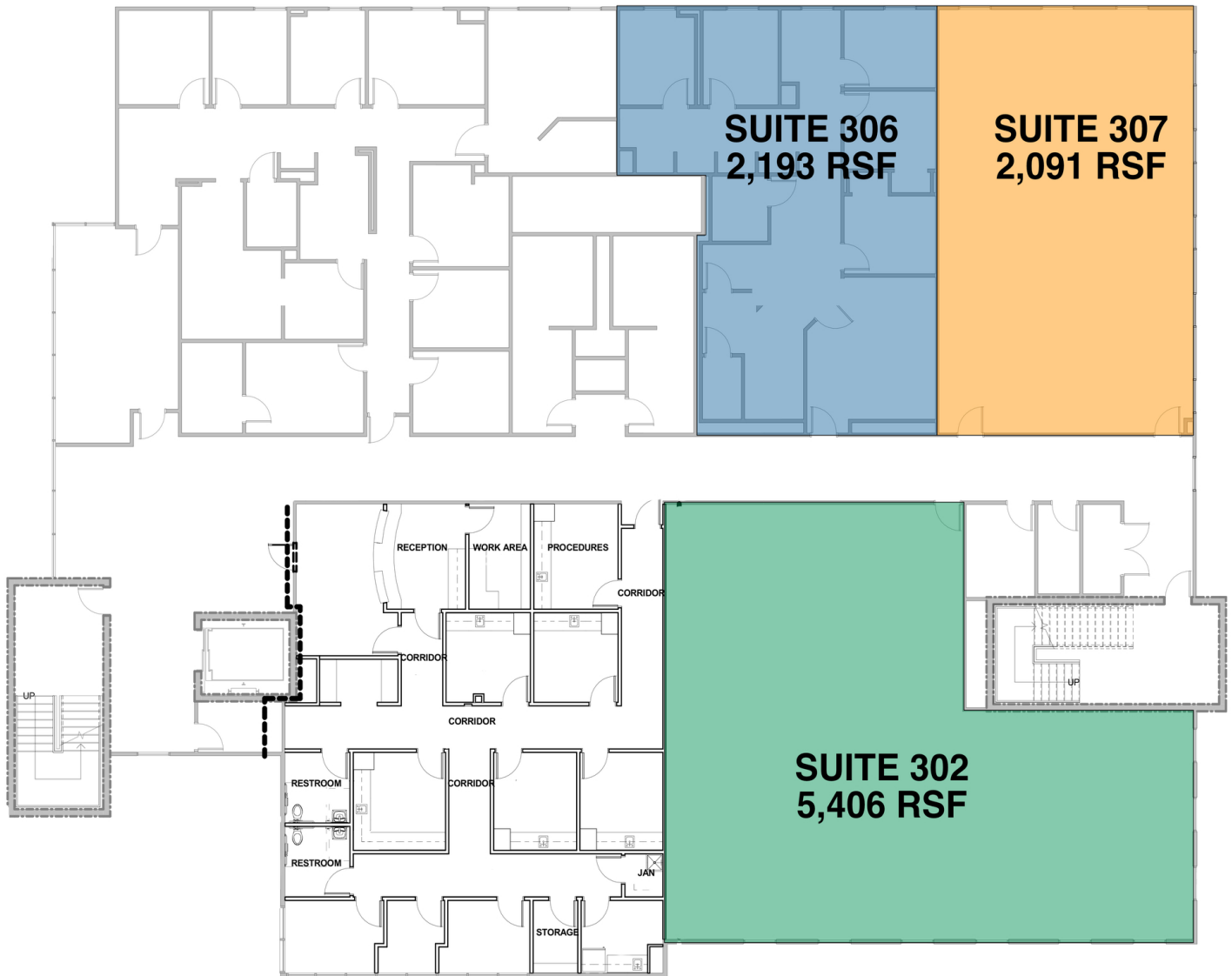
For more information please contact:

**TRE DUPUY**  
tdupuy@priceedwards.com  
405.843.7474

**CRAIG TUCKER**  
ctucker@priceedwards.com  
405.843.7474

# ST. ANTHONY SOUTH HEALTHPLEX

## FLOOR PLANS



For more information please contact:

**TRE DUPUY**

tdupuy@priceedwards.com  
405.843.7474

**CRAIG TUCKER**

ctucker@priceedwards.com  
405.843.7474

# ST. ANTHONY SOUTH HEALTHPLEX

## ADDITIONAL PHOTOS



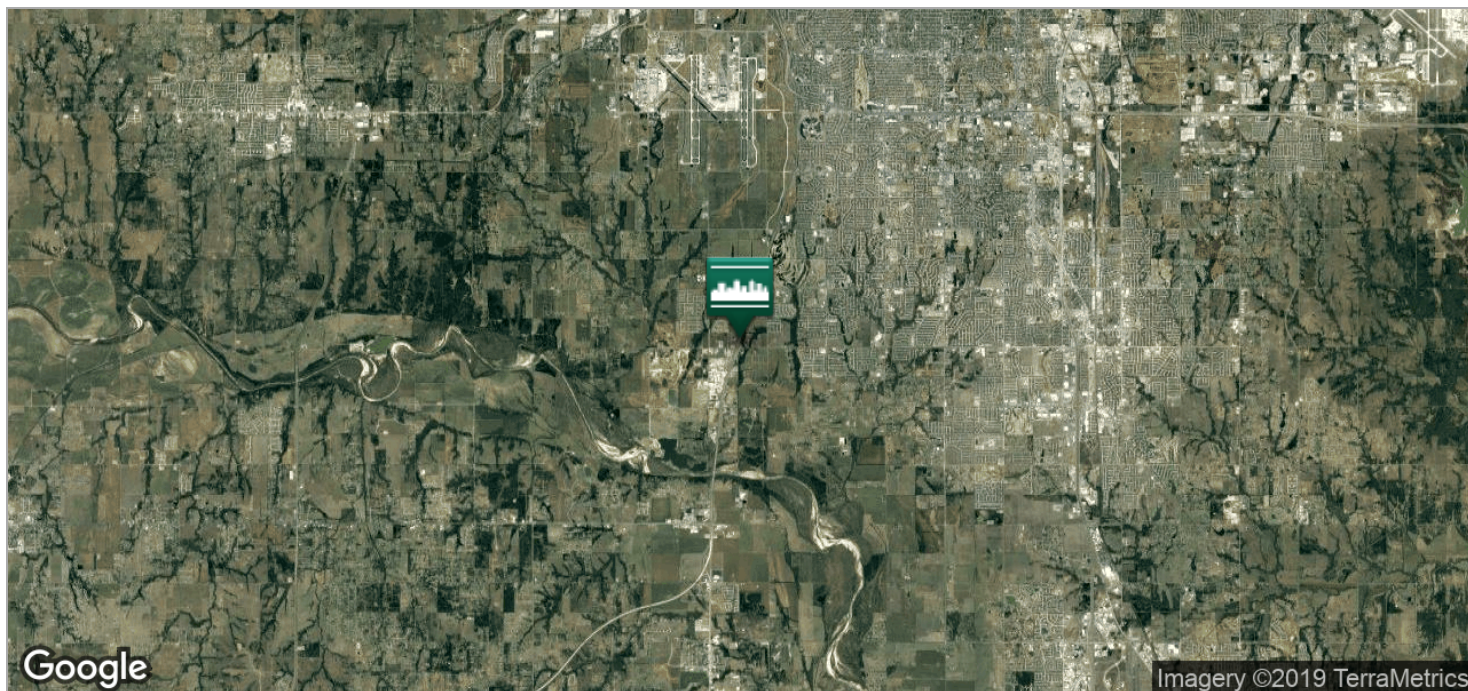
For more information please contact:

**TRE DUPUY**  
tdupuy@priceedwards.com  
405.843.7474

**CRAIG TUCKER**  
ctucker@priceedwards.com  
405.843.7474

# ST. ANTHONY SOUTH HEALTHPLEX

## LOCATION MAPS



For more information please contact:

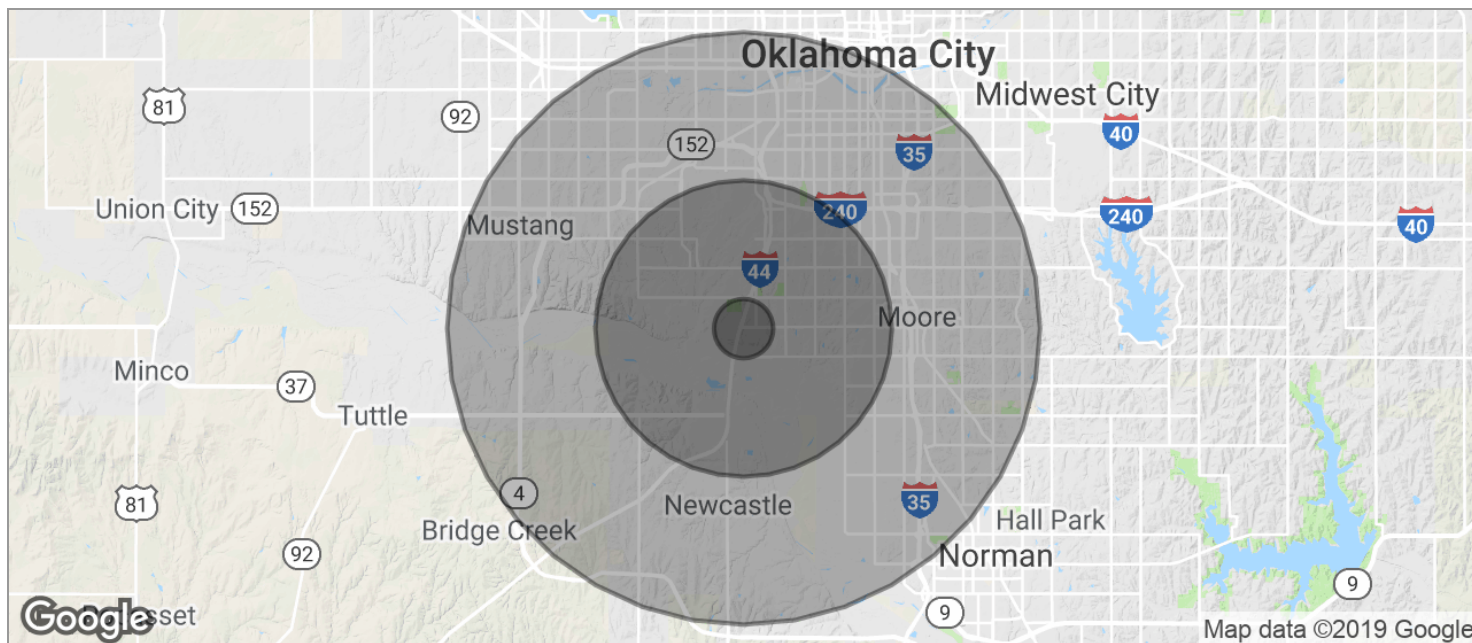
**TRE DUPUY**

tdupuy@priceedwards.com  
405.843.7474

**CRAIG TUCKER**

ctucker@priceedwards.com  
405.843.7474

## DEMOGRAPHICS MAP



<b>POPULATION</b>	<b>1 MILE</b>	<b>5 MILES</b>	<b>10 MILES</b>
TOTAL POPULATION	803	70,573	322,209
MEDIAN AGE	39.0	36.5	33.6
MEDIAN AGE (MALE)	39.2	35.2	32.9
MEDIAN AGE (FEMALE)	38.9	37.9	34.4
<b>HOUSEHOLDS &amp; INCOME</b>	<b>1 MILE</b>	<b>5 MILES</b>	<b>10 MILES</b>
TOTAL HOUSEHOLDS	277	26,978	118,668
# OF PERSONS PER HH	2.9	2.6	2.7
AVERAGE HH INCOME	\$102,485	\$72,662	\$58,489
AVERAGE HOUSE VALUE	\$291,634	\$157,275	\$139,356

\* Demographic data derived from 2010 US Census

For more information please contact:

**TRE DUPUY**

tdupuy@priceedwards.com  
405.843.7474

**CRAIG TUCKER**

ctucker@priceedwards.com  
405.843.7474