

KICKINGBIRD SQUARE

1215 - 1417 E DANFORTH RD, EDMOND, OK 73034



PROPERTY DESCRIPTION

Kickingbird Square is situated at the busy intersection of E Danforth Road and N Bryant Ave in Edmond, Oklahoma, offering a variety of dining, shopping, and entertainment choices. This center is designed with accessibility in mind, featuring easy access and ample parking to accommodate all visitors easily. The center is home to a diverse mix of establishments, including Icon Cinemas, Pet Supplies Plus, Signature Grill, Interurban, GOLD'S Gym plus a strong mix of retail and service tenants attracting a broad customer base.

OFFERING SUMMARY

Lease Rate	\$18.00 - 20.00 SF/yr (NNN)
Available SF:	1,200 - 3,165 SF
Building Size:	111,749 SF

SPACES	LEASE RATE	SPACE SIZE
Suite 1235	\$18.00 - 20.00 SF/yr	3,165 SF
Suite 1239	\$18.00 - 20.00 SF/yr	1,400 SF
Suite 1243	\$18.00 - 20.00 SF/yr	2,205 SF
Suite 1319	\$18.00 - 20.00 SF/yr	2,600 SF
Suite 1407	\$18.00 - 20.00 SF/yr	1,200 SF

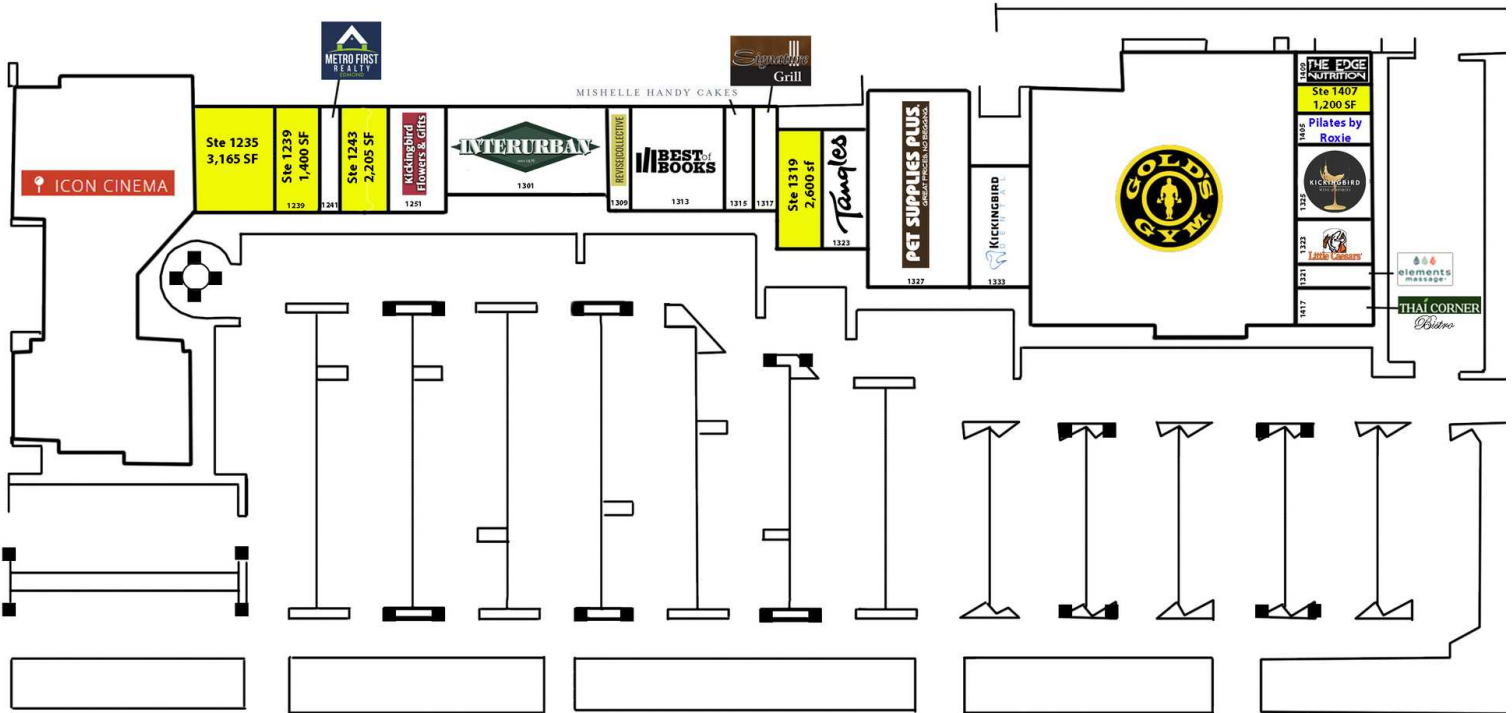
GEORGE WILLIAMS, CCIM

gwilliams@priceedwards.com

O: 405.239.1270 C: 405.657.7800

KICKINGBIRD SQUARE

1215 - 1417 E DANFORTH RD, EDMOND, OK 73034



GEORGE WILLIAMS, CCIM

gwilliams@priceedwards.com

O: 405.239.1270 C: 405.657.7800

KICKINGBIRD SQUARE

1215 - 1417 E DANFORTH RD EDMOND, OK 73034



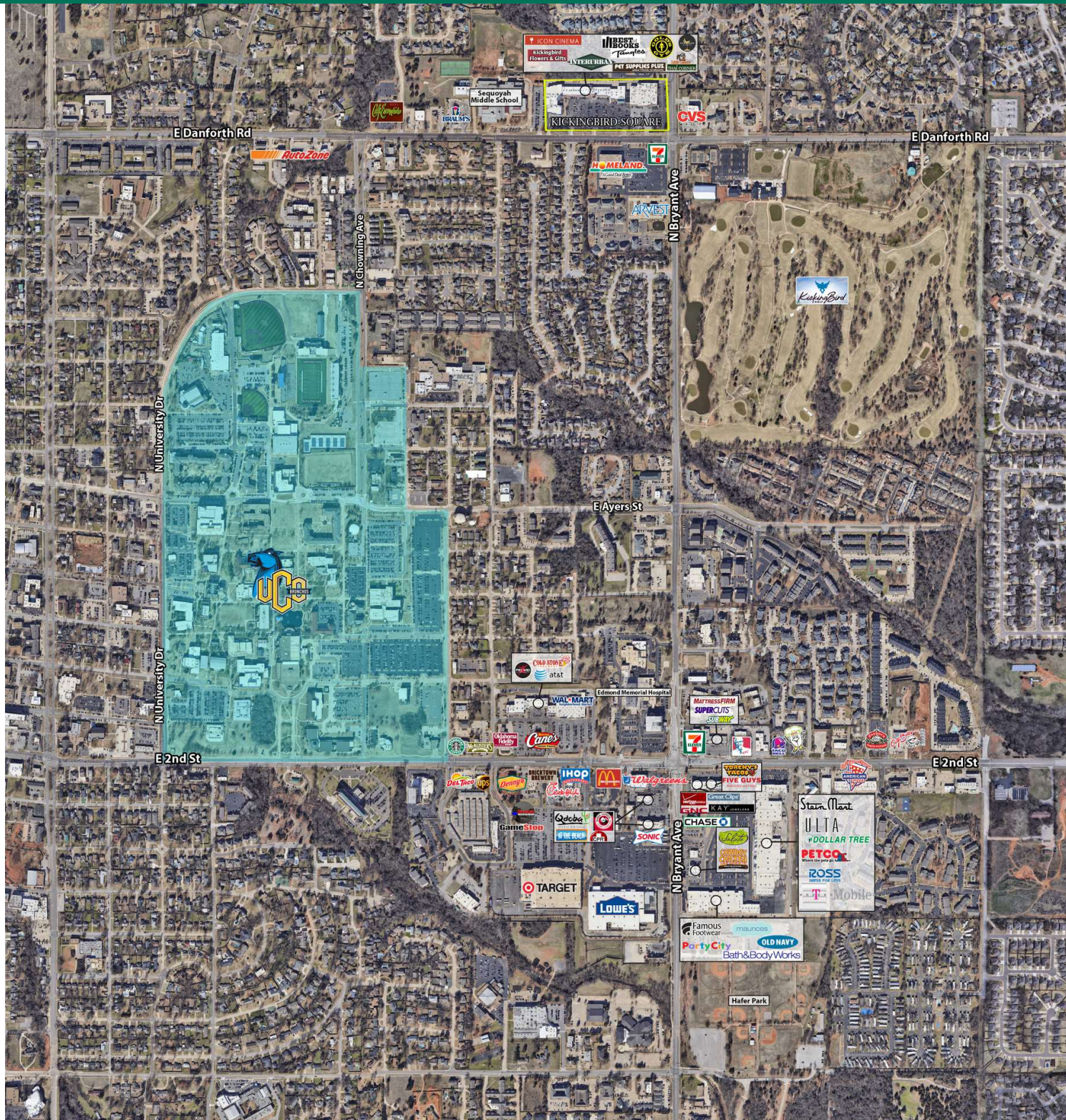
GEORGE WILLIAMS, CCIM

gwilliams@priceedwards.com

O: 405.239.1270 C: 405.657.7800

KICKINGBIRD SQUARE

1215 - 1417 E DANFORTH RD, EDMOND, OK 73034



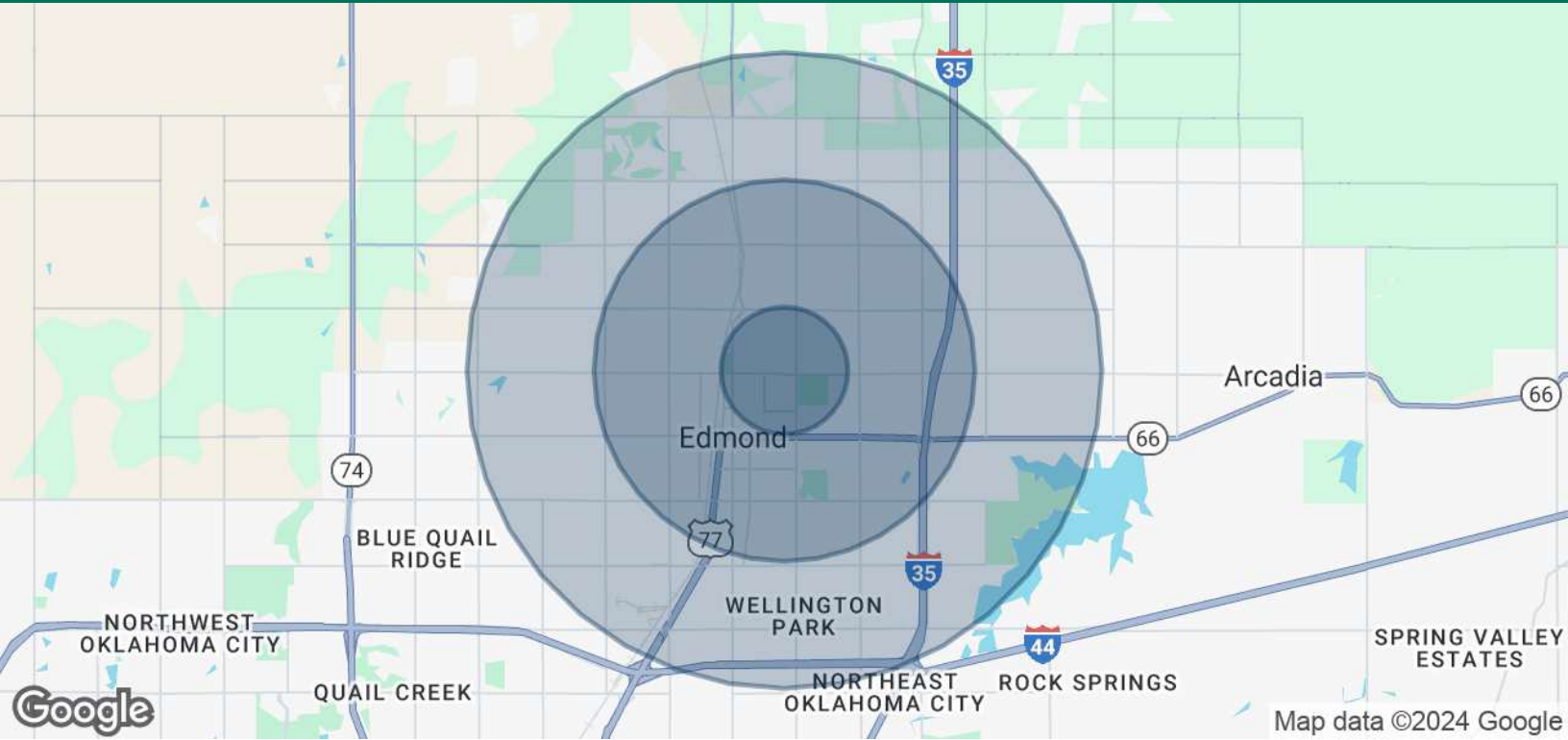
GEORGE WILLIAMS, CCIM

gwilliams@priceedwards.com

O: 405.239.1270 C: 405.657.7800

KICKINGBIRD SQUARE

1215 - 1417 E DANFORTH RD, EDMOND, OK 73034



POPULATION	1 MILE	3 MILES	5 MILES
Total Population	9,791	60,805	123,512
Average Age	34.7	37.8	37.8
Average Age (Male)	31.1	35.8	36.1
Average Age (Female)	37.5	39.1	38.8
HOUSEHOLDS & INCOME	1 MILE	3 MILES	5 MILES
Total Households	4,263	24,781	48,566
# of Persons per HH	2.3	2.5	2.5
Average HH Income	\$84,241	\$99,090	\$112,716
Average House Value	\$183,920	\$233,776	\$262,677

* Demographic data derived from 2020 ACS - US Census

03182024

GEORGE WILLIAMS, CCIM

gwilliams@priceedwards.com

O: 405.239.1270 C: 405.657.7800