

Jamestown Office Park

3033, 3035, 3037 NW 63rd, Oklahoma City, OK 73116



OFFICE SPACE NOW AVAILABLE

Available SF:	Suite 104-W: ±2,057 SF
Lease Rate:	\$15.00 SF/yr (Gross)
Building Size:	73,886 SF
Building Class:	B
Year Built:	1974
Renovated:	2012
Market:	NW Quadrant
Cross Streets:	NW 63rd & N. May Avenue

PROPERTY OVERVIEW

Variety of spaces available from 6100 to 529 square feet. The spaces feature a variety of flooring types, 2' X 4' grid ceilings, floor to ceiling glass and newly remodeled common restrooms and common hallways.

- *Convenient location
- *Drive-up free surface parking on all sides
- *Professionally managed with on-site engineering

LOCATION OVERVIEW

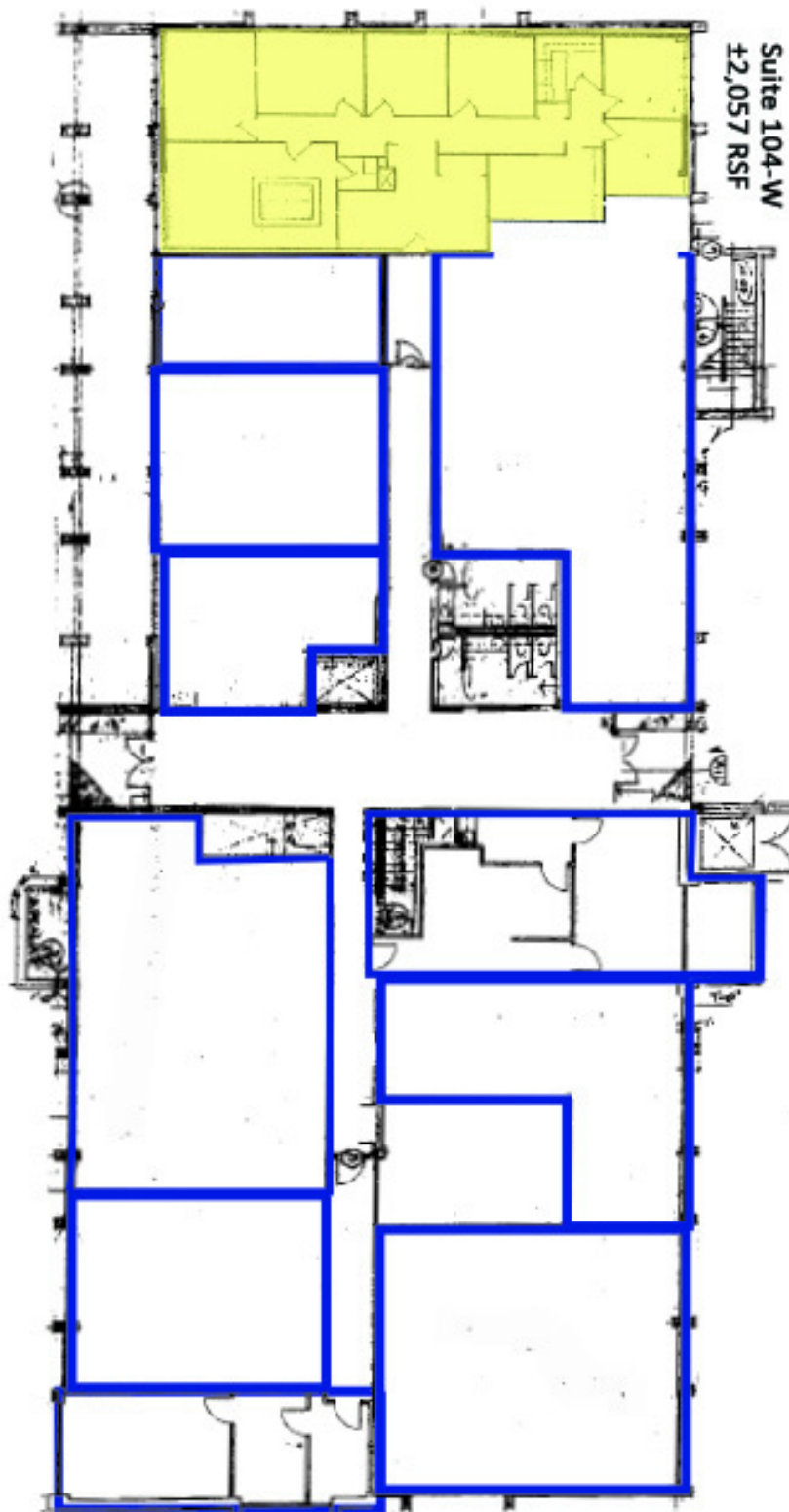
Nestled in the heart of the desirable Northwest quadrant, this value packed, three building complex delivers the ambiance of a suburban garden style property with the convenience of a larger, multi-tenant complex. Mature landscaping and multiple water features combined with floor to ceiling glass lines makes this building a serene and comfortable working environment.

FOR MORE INFORMATION, CONTACT

Derek James
djames@pricedwards.com
405.843.7474
210 Park Ave, Suite 700
Oklahoma City, OK 73102
www.pricedwards.com

Jamestown Office Park

3033, 3035, 3037 NW 63rd, Oklahoma City, OK 73116



Suite 104-W
±2,057 RSF

Jamestown Office Park
1st Floor, West