



## OFFERING SUMMARY

Lease Rate:	Negotiable
Available SF:	10,327 SF
Market:	Downtown OKC
Submarket:	Midtown

## PROPERTY OVERVIEW

Former YMCA suite is ideally located for another fitness facility, school or daycare. This location is walking distance to 500 apartments and three neighborhoods and a short streetcar ride to all of Downtown OKC, including the central business district.

Suite is adjacent to a second-story parking area that can be converted to an outdoor area.

## PROPERTY HIGHLIGHTS

- Finished Men's and Women's Locker Rooms
- Access to dedicated outdoor play area
- Abundant Natural Light - windows on three sides
- Combination of open space and classrooms
- Private entrance from sidewalk

**ALLISON BARTA BAILEY**  
405.239.1245  
abailey@priceedwards.com  
priceedwards.com

**C. DEREK JAMES**  
405.239.1206  
djames@priceedwards.com  
priceedwards.com

# Former YMCA Available for Lease

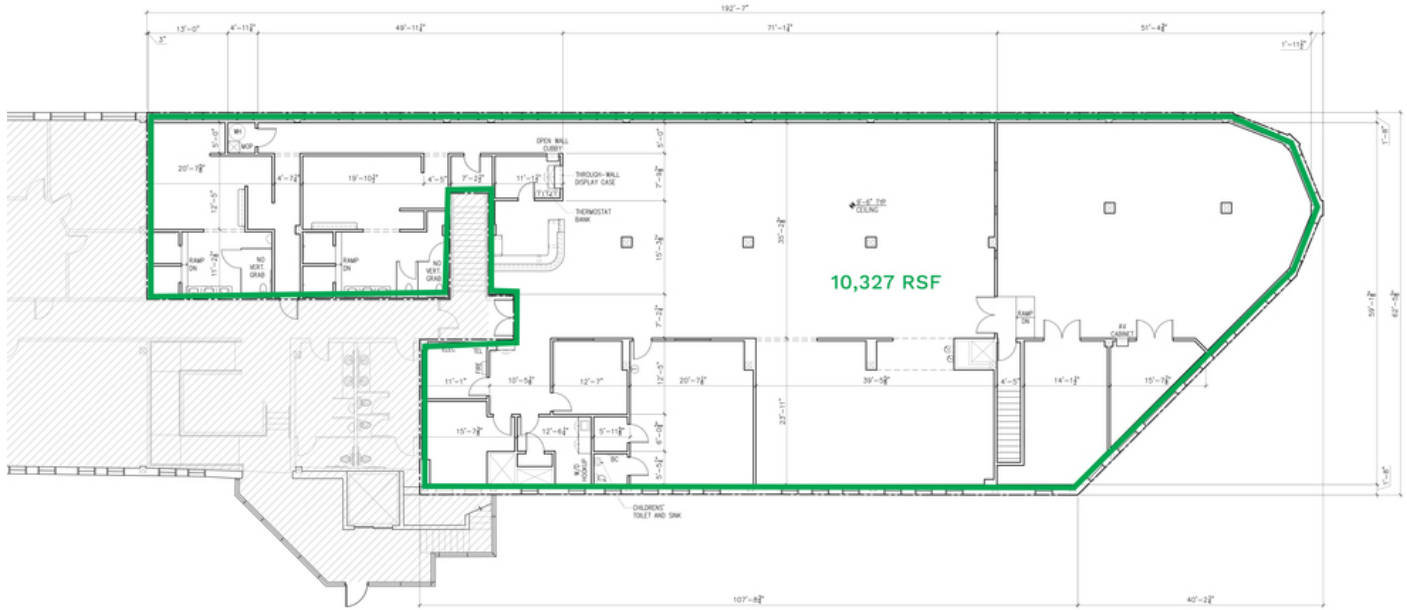
1100 Classen Drive, Oklahoma City, OK 73103



**ALLISON BARTA BAILEY**  
405.239.1245  
abailey@priceedwards.com  
priceedwards.com

**C. DEREK JAMES**  
405.239.1206  
djames@priceedwards.com  
priceedwards.com





**AS-BUILT PLAN - SECOND FLOOR**  
SCALE: 1/8"=1'-0"

Floor Plan



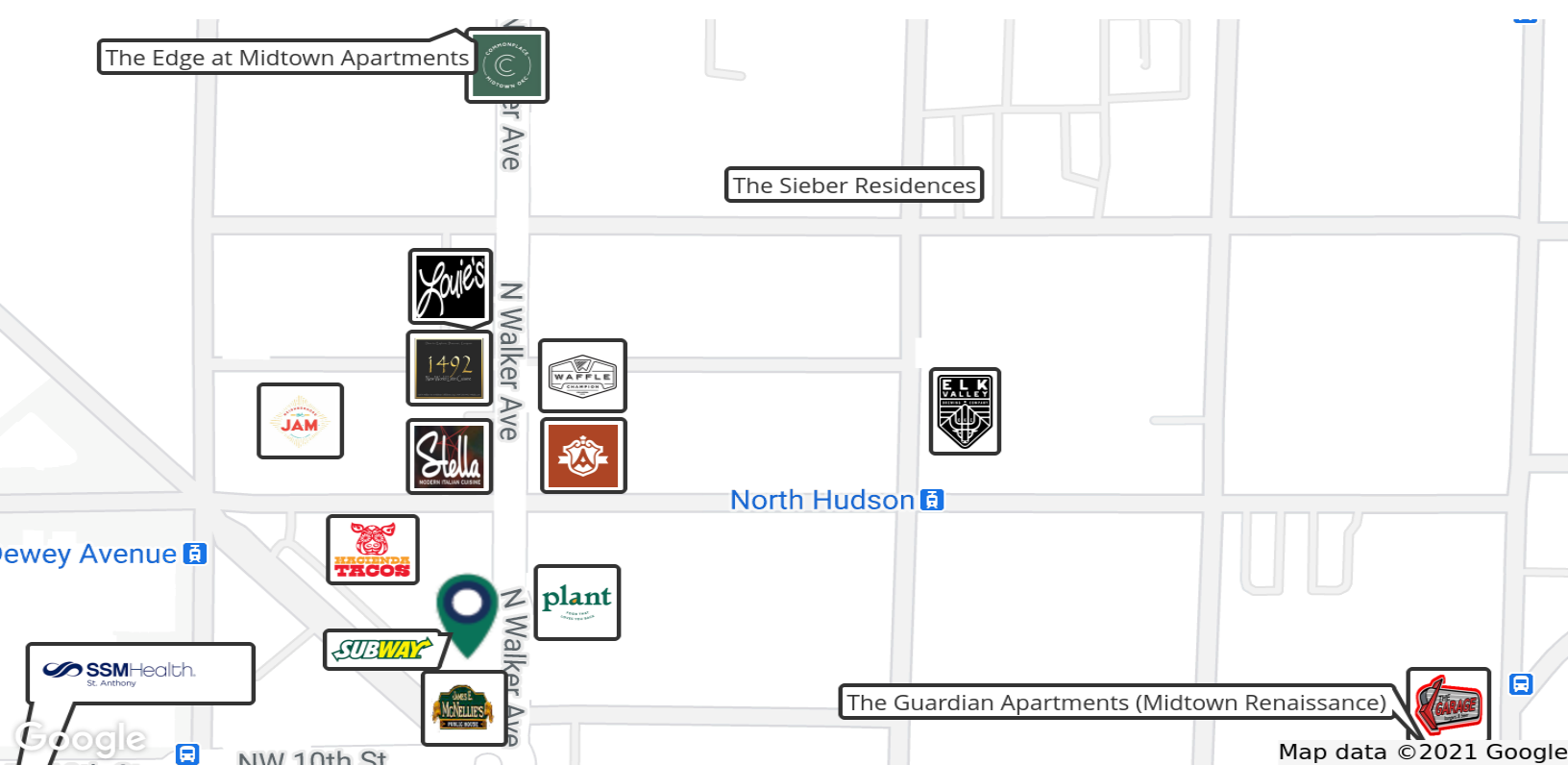
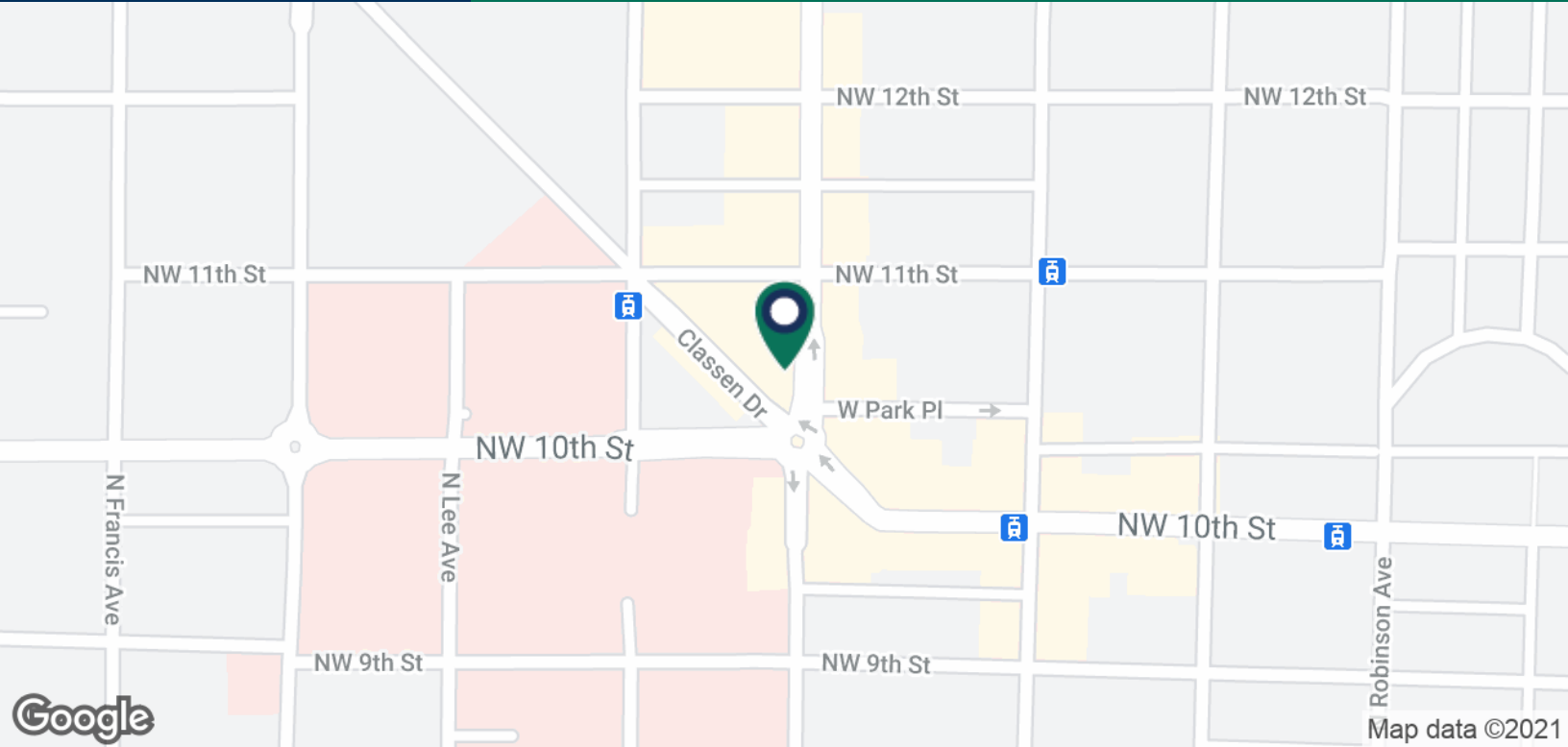
Optional outdoor space at grade with suite

**ALLISON BARTA BAILEY**  
405.239.1245  
abailey@priceedwards.com  
priceedwards.com

**C. DEREK JAMES**  
405.239.1206  
djames@priceedwards.com  
priceedwards.com

# Former YMCA Available for Lease

1100 Classen Drive, Oklahoma City, OK 73103



**ALLISON BARTA BAILEY**  
405.239.1245  
abailey@priceedwards.com  
priceedwards.com

**C. DEREK JAMES**  
405.239.1206  
djames@priceedwards.com  
priceedwards.com