

LEWIS PARK OFFICE BUILDING 5319 SOUTH LEWIS AVENUE TULSA, OK 74105



PROPERTY DESCRIPTION

Lewis Park is a garden office building in the South Lewis Corridor with curbside parking that offers tenants a professional work environment.

PROPERTY HIGHLIGHTS

- Suite 111 - 2,939 SF
- Suite 200 - 1,698 SF; Available 1/1/25
- Monument Signage
- Key card for after-hours access
- On-site ownership and management
- Easy Access to Interstate 44

OFFERING SUMMARY

Lease Rate:	\$14.25 SF/yr (Full Service)
Available SF:	1,698 - 2,939 SF
Building Size:	17,803 SF

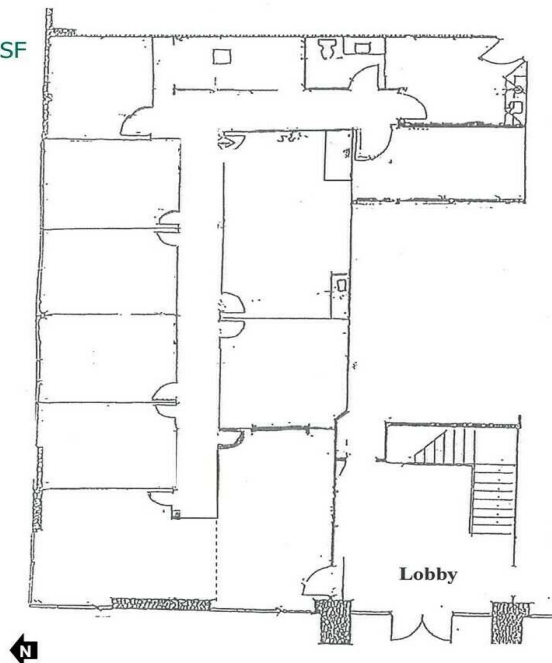
DEMOGRAPHICS	1 MILE	3 MILES	5 MILES
Total Households	5,878	41,938	97,737
Total Population	11,979	89,915	213,584
Average HH Income	\$59,217	\$70,164	\$68,431

TANDA FRANCIS

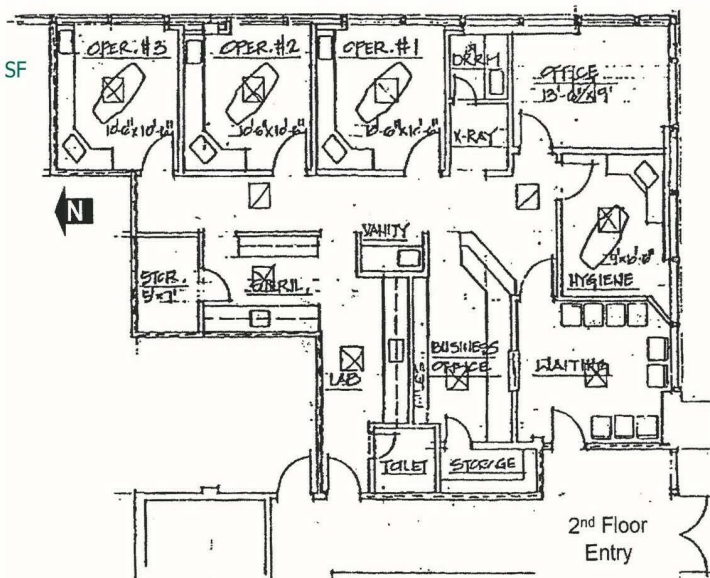
tfrancis@priceedwards.com
O: 918.394.1000

LEWIS PARK OFFICE BUILDING 5319 SOUTH LEWIS AVENUE TULSA, OK 74105

Suite 111 – 2,939 SF



Suite 200 – 1,698 SF



TANDA FRANCIS

tfrancis@priceedwards.com

O: 918.394.1000