

# Lewis Park - For Lease

5319 South Lewis Avenue, Tulsa, OK 74105



## FOR LEASE

Available SF - Suite 111:	2,939 SF
Rent Rate:	\$14.25 PSF
Building Size:	17,803 SF
Year Built:	1985
Zoning:	OL

## PROPERTY OVERVIEW

Lewis Park is a garden office building with curbside parking that offers tenants a professional work environment in the South Lewis Corridor.

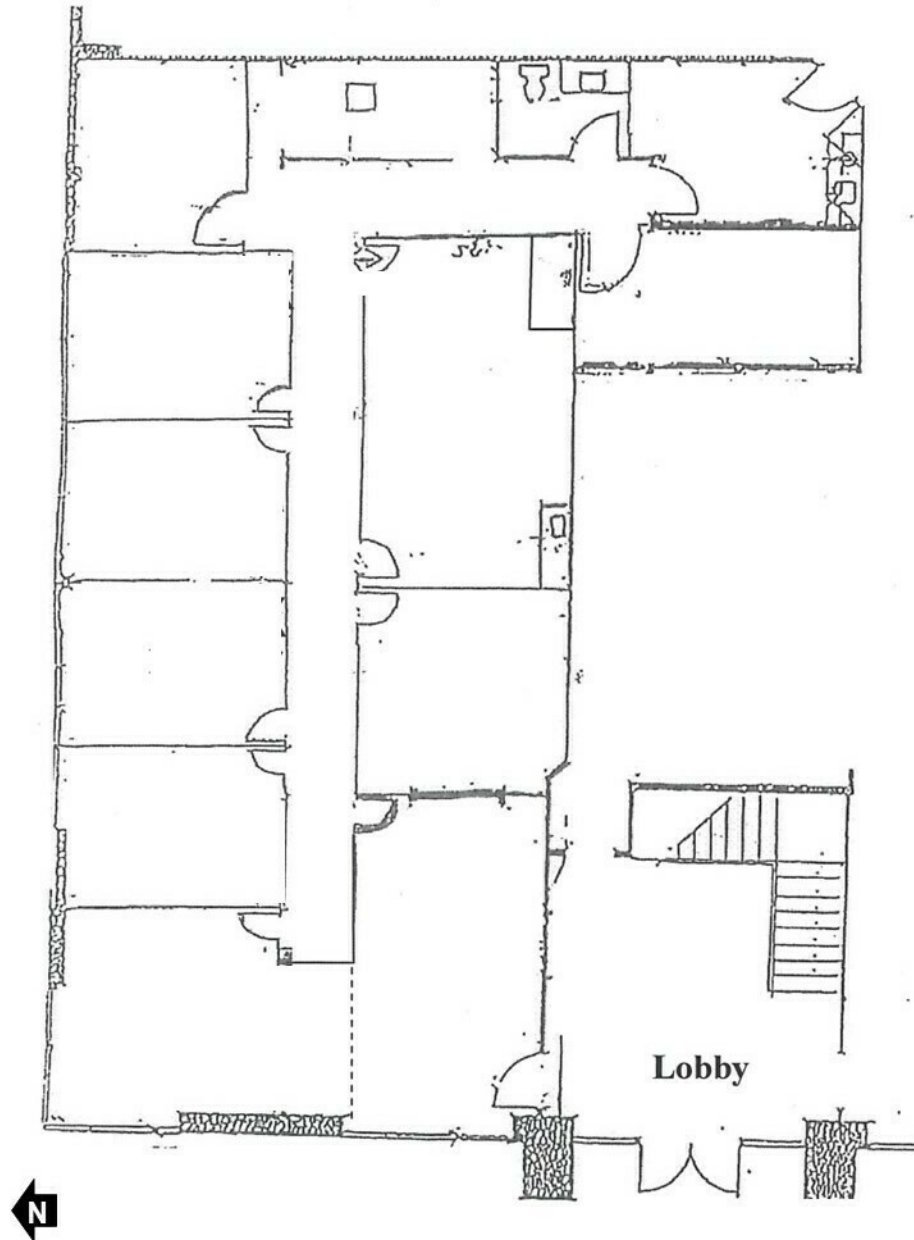
- \* Monument signage.
- \* Key card for after-hours access.
- \* On-site ownership and management.

## LOCATION OVERVIEW

Lewis Park is centrally located on South Lewis Avenue just south of East 51st Street in the South Lewis Corridor which features Southern Hills Country Club. It has a great location close to Tulsa's highway system with easy access and close proximity to Interstate 44.

**TANDA FRANCIS**  
918.394.1000  
tfrancis@priceedwards.com  
priceedwards.com

Suite 111 – 2,939 SF



TANDA FRANCIS  
918.394.1000  
tfrancis@priceedwards.com  
priceedwards.com