

IBC Tower

2250 East 73rd Street, Tulsa, Oklahoma

FOR LEASE



- Suite 360 – 1,929 SF
- Suite 415 – 2,245 SF – Available 11/1/19
- Suite 600 – 5,292 SF – 6,632 SF contiguous
- Suite 625 – 1,340 SF – 6,632 SF contiguous
- Common area community/training room, seats up to 100
- Common area conference rooms
- On-Site Bank with ATM services



Tanda Francis
tfrancis@priceedwards.com
918.394.1000
7633 East 63rd Place, Suite 400
Tulsa, Oklahoma, OK 74133
www.priceedwards.com

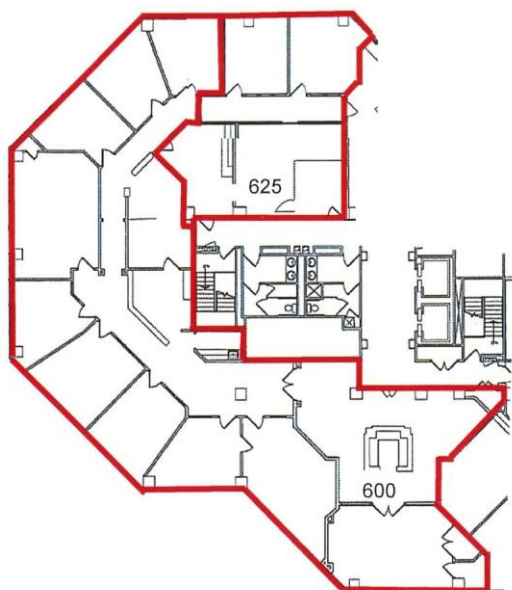
Lisa Heller
lheller@priceedwards.com
918.394.1000
7633 East 63rd Place, Suite 400
Tulsa, Oklahoma, OK 74133
www.priceedwards.com

The information contained herein has been obtained from sources deemed to be reliable; however, Price Edwards & Company does not warranty, confirm or verify any of the information contained herein or its accuracy, nor has Price Edwards & Company conducted any investigation regarding these matters. All potential tenants/purchasers must take appropriate measures to verify all of the information set forth herein.

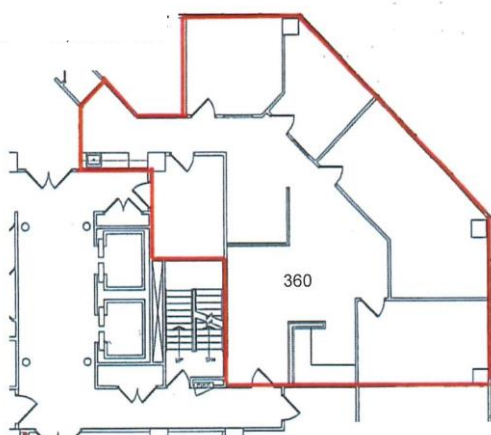
IBC Tower

FLOOR PLAN

6,632 SF Available
Suite 600 – 5,292 SF
Suite 625 – 1,340 SF



Suite 360 – 1,929 SF

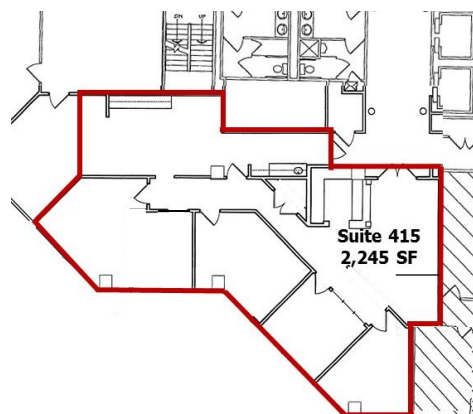


Community / Training Room



Building Entry

Suite 415 – 2,245 SF
Available 11/1/19



TANDA FRANCIS
918.394.1000 Office
918-.630-9991 Cell
tfrancis@priceedwards.com

The information contained herein has been obtained from sources deemed to be reliable; however, Price Edwards & Company does not warranty, confirm or verify any of the information contained herein or its accuracy, nor has Price Edwards & Company conducted any investigation regarding these matters. All potential tenants/purchasers must take appropriate measures to verify all of the information set forth herein.