

1217 EAST 48TH STREET

PEORIA AVENUE AT 48TH STREET TULSA, OK 74105

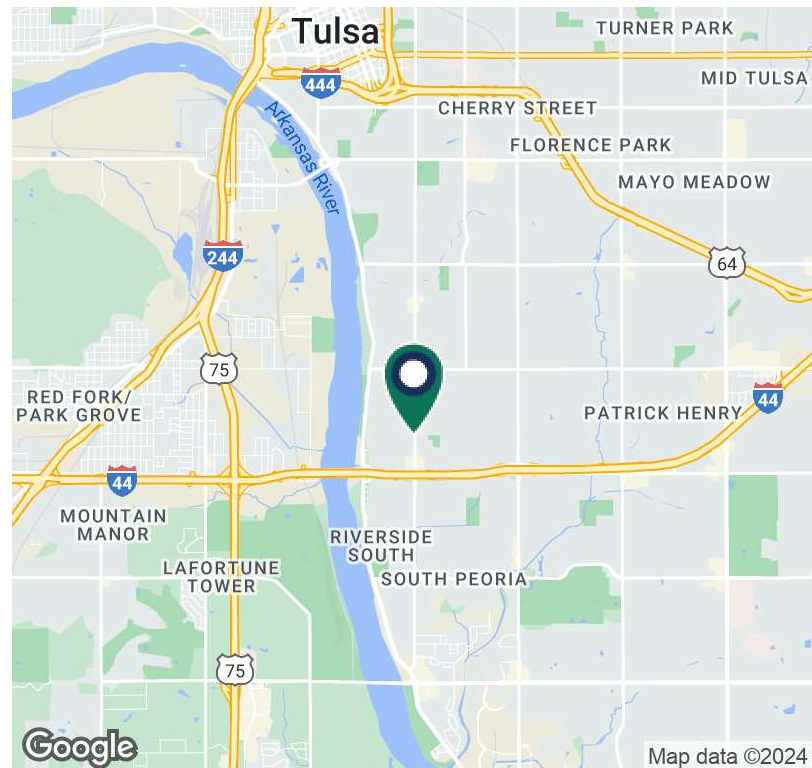


PROPERTY HIGHLIGHTS

- Peoria Avenue Frontage
- Zoned CH
- Hard Corner Location
- Suite 101 - 3,586 SF - Move-In Ready
- Suite 102 - 2,401 SF - Shell
- Tenant Pays Janitorial
- Parking - 39 Spaces, With Front Door Parking
- Convenient to I-44 and Riverside Drive

OFFERING SUMMARY

Lease Rate:	\$18.00 SF/YR (Full Service)
Available SF:	2,401 to 5,987 SF
Lot Size:	0.766 Acres (33,350 SF)

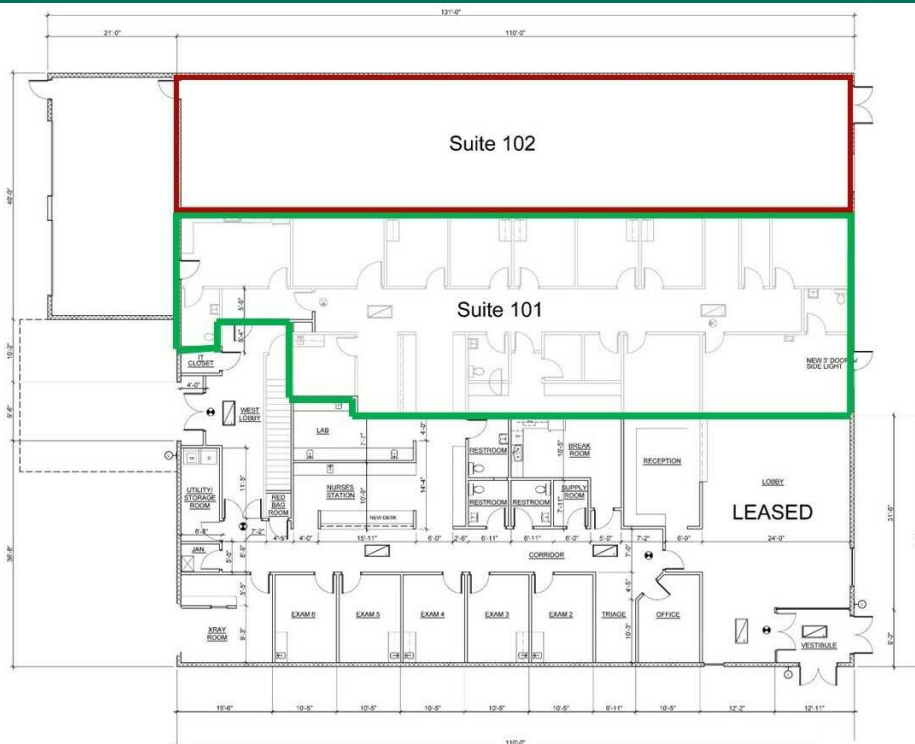


TANDA FRANCIS

tfrancis@priceedwards.com
O: 918.394.1000

1217 EAST 48TH STREET

PEORIA AVENUE AT 48TH STREET TULSA, OK 74105



TANDA FRANCIS

tfrancis@priceedwards.com

O: 918.394.1000