

## 1217 EAST 48TH STREET

PEORIA AVENUE AT 48TH STREET TULSA, OK 74105

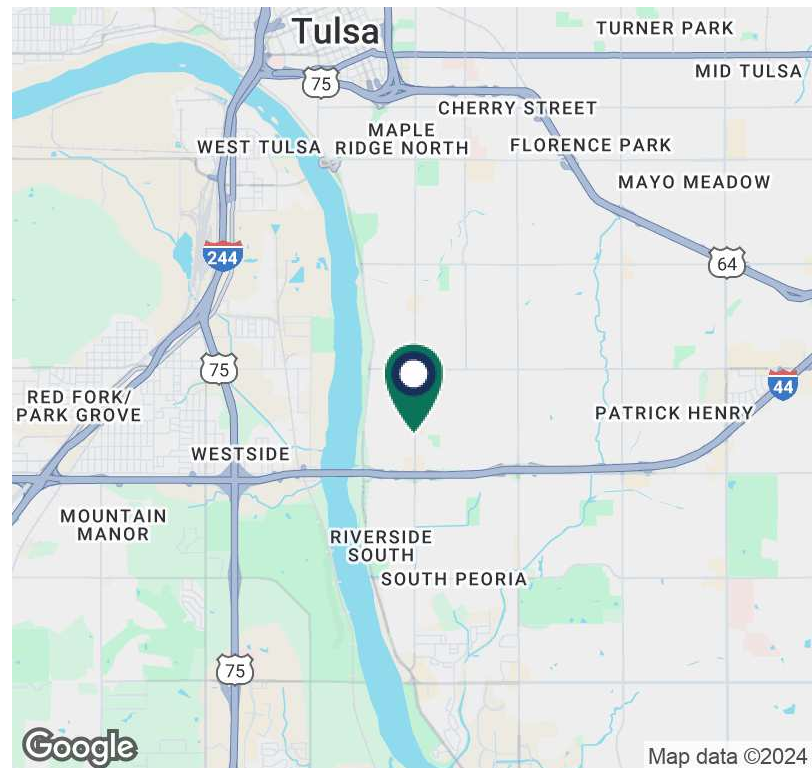


### PROPERTY HIGHLIGHTS

- Peoria Avenue Frontage
- Zoned CH
- Hard Corner Location
- Suite 101 - 3,586 SF - Move-In Ready
- Suite 102 - 2,401 SF - Shell
- Contiguous - 5,987 SF
- Tenant Pays Janitorial
- Parking - 39 Spaces, With Front Door Parking
- Convenient to I-44 and Riverside Drive

### OFFERING SUMMARY

<b>Lease Rate:</b>	Negotiable
<b>Available SF:</b>	2,401 to 5,987 SF
<b>Lot Size:</b>	0.766 Acres (33,350 SF)

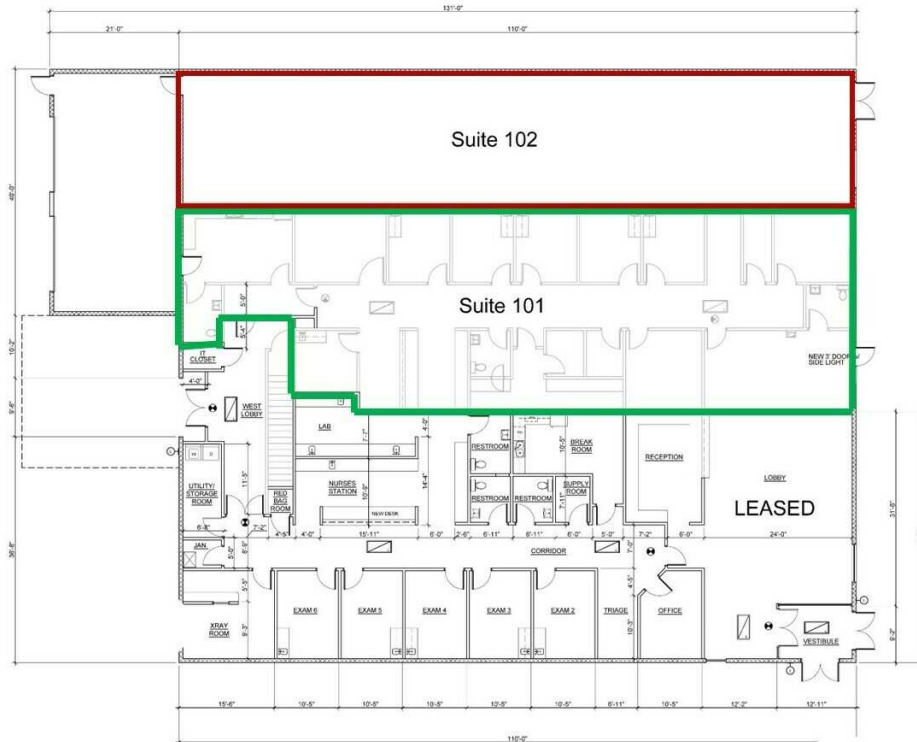


### TANDA FRANCIS

tfrancis@priceedwards.com  
O: 918.394.1000

## 1217 EAST 48TH STREET

PEORIA AVENUE AT 48TH STREET TULSA, OK 74105



**TANDA FRANCIS**

tfrancis@priceedwards.com

O: 918.394.1000