

4300 AMELIA EARHART LANE

## WILL ROGERS AIRPORT OFFICE -REDUCED LEASE RATE



### OFFERING SUMMARY

**Available SF:** 5,000 SF

**Monthly Base Rent :** \$2,000/month (MG)  
for first 6 months

**Parking:** non-reserved,  
surface parking

**Quadrant:** Southwest

### PROPERTY OVERVIEW

The Building sits on an expansive lot with on-building signage available and viewable from Terminal Drive, the main road to and from the airport arrival/departure gates. Employees and guests have available twenty two parking spaces. The building features an expansive ceiling height, nice glass lines and tinted windows. It has a full sized break area, a sitting patio and multiple private offices and training/conference rooms. There are cubicles in-place and available to use along with other office furnishings. The building is newly renovated including new energy efficient heating and cooling systems, LED lighting, replaced windows or window film, new ceiling tiles, painting, carpeting and restroom repairs.

### LOCATION OVERVIEW

The stand alone office building situated next to the 99's Women's Air Museum is located on Will Rogers Airport Trust land. This building has easy access to all major thoroughfares and six miles from the central business district .

For more information please contact:

**C. DEREK JAMES**  
djames@priceedwards.com  
405.239.1206

4300 AMELIA EARHART LANE

## ADDITIONAL PHOTOS



For more information please contact:

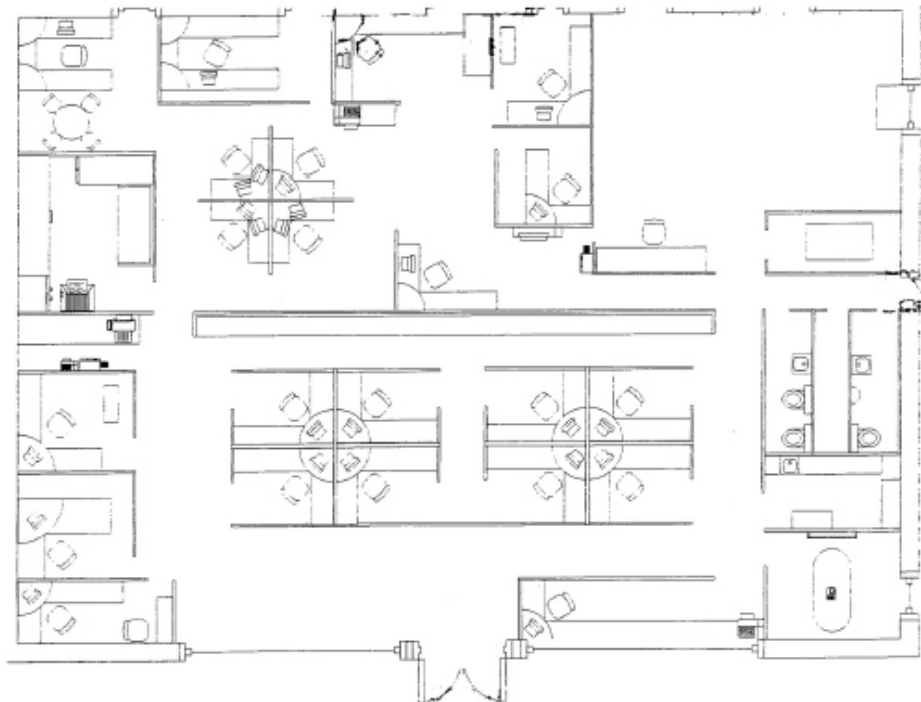
**C. DEREK JAMES**

djames@priceedwards.com  
405.239.1206



4300 AMELIA EARHART LANE

## ADDITIONAL PHOTOS



For more information please contact:

**C. DEREK JAMES**

djames@priceedwards.com  
405.239.1206



4300 AMELIA EARHART LANE

## LOCATION MAPS



For more information please contact:

**C. DEREK JAMES**

djames@priceedwards.com  
405.239.1206