

Retail/Office in Midtown

421 NW 10th , Oklahoma City, OK 73103

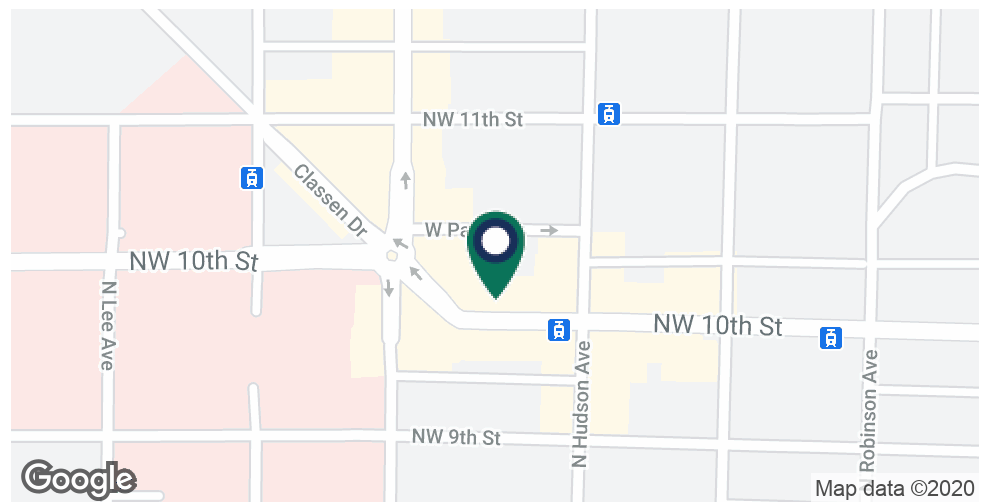


OFFERING SUMMARY

Lease Rate:	\$19.00 SF/yr (NNN)
Building Size:	30,604 SF
Available SF:	2,009 SF
NNN Charges	Approx \$4.00 psf

PROPERTY OVERVIEW

2009 SF available suite in the development anchored by Fassler Hall, a popular biergarten in Midtown. Suite has two finished ADA restrooms and HVAC throughout. Tenant has access to shared parking lot for employees and customers at no additional cost. Significant sign opportunity faces Park Place and Hudson Avenue in Midtown.



C. DEREK JAMES
405.239.1206
djames@pricedwards.com
pricedwards.com

ALLISON BARTA BAILEY
405.239.1245
abailey@pricedwards.com
pricedwards.com

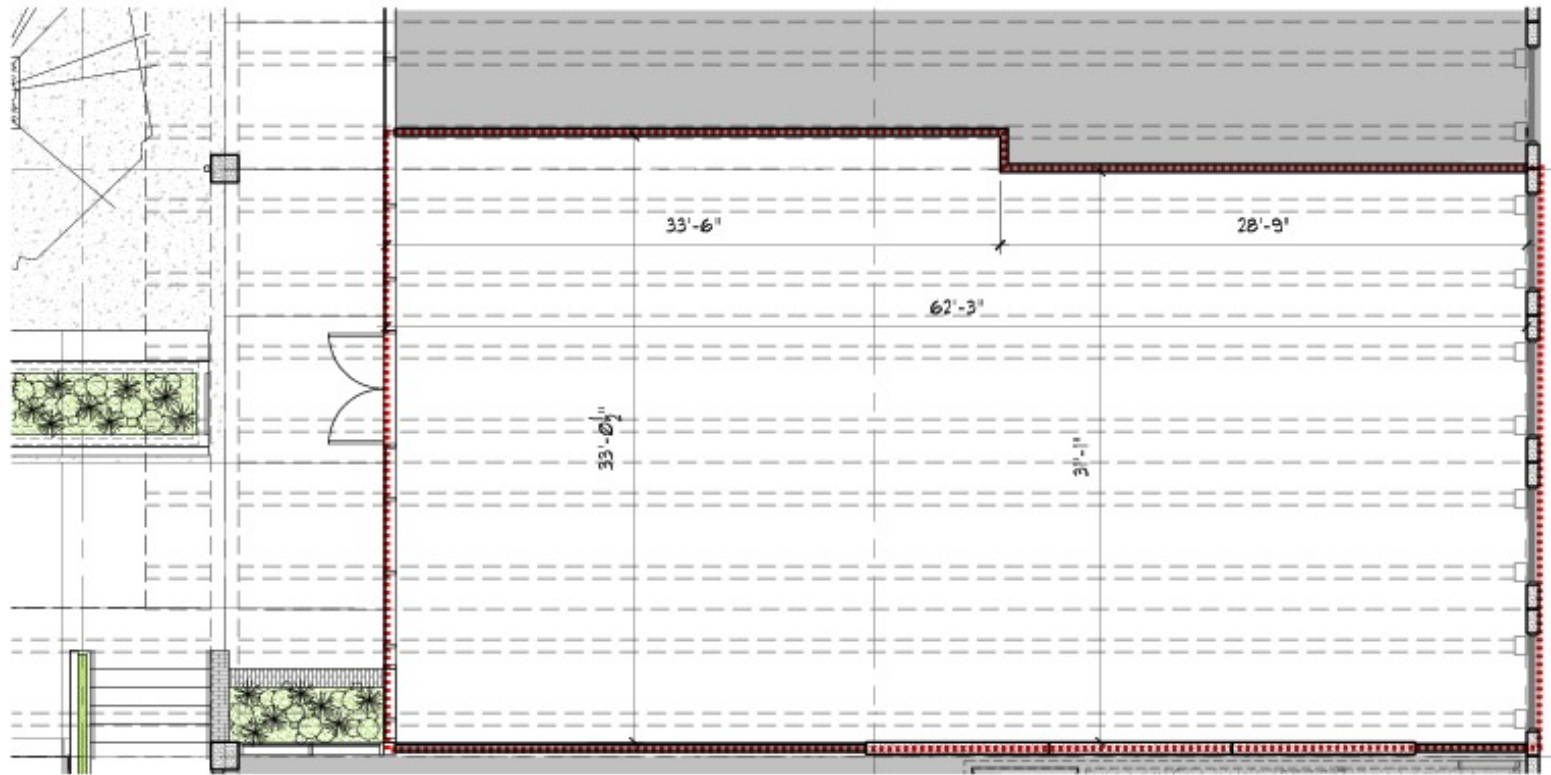
2,009 SF suite available in Midtown

421 NW 10th , Oklahoma City, OK 73103



C. DEREK JAMES
405.239.1206
djames@pricedwards.com
pricedwards.com

ALLISON BARTA BAILEY
405.239.1245
abailey@pricedwards.com
pricedwards.com



421 NW 10th Street - Suite 202E

scale 1/8" = 1'-0"

Fitzsimmons Architects
04.15.2015

C. DEREK JAMES
405.239.1206
djames@pricedwards.com
pricedwards.com

ALLISON BARTA BAILEY
405.239.1245
abailey@pricedwards.com
pricedwards.com