



## OFFERING SUMMARY

Building Size:	12,000 Square Feet
Unit Sizes:	2,000 SF per unit
Available SF:	10,000 Square Feet
Base Rent:	\$7.50 per Square Foot
Base Rent (Mo.)	\$1,250
Triple Nets (unit)	\$1.78 per Square foot
Market:	Northwest

## LOCATION OVERVIEW

The Rockwell Industrial Park is located in the Northwest quadrant of Oklahoma City. Sitting just north of Wiley Post Airport, this location allows quick access to the Northwest Expressway and in turn, the Kilpatrick Turnpike and all points beyond. Fine and casual dining abound in the area. Big box retailers close by include Target, Lowes along with many other local and national retailers.

## PROPERTY HIGHLIGHTS:

**FIVE, 2,000 SQUARE FOOT (MOL) UNITS AVAILABLE**

**CAN BE LEASED IN 2,000 SQUARE FOOT INCREMENTS**

**12' ON-GRADE OVERHEAD DOORS, 1 PER UNIT**

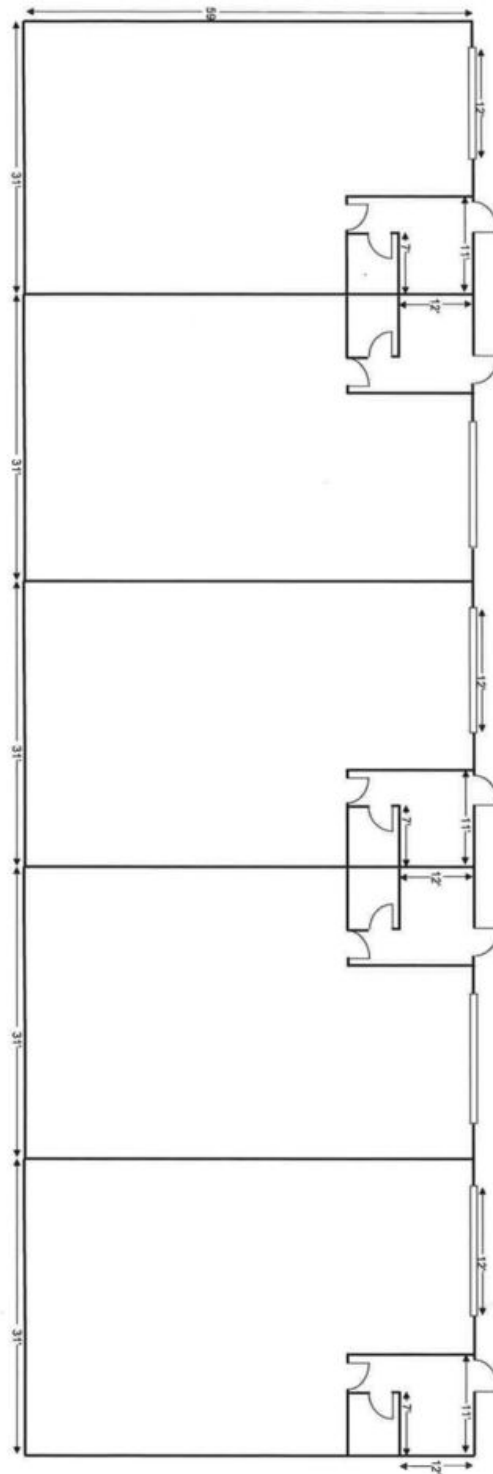
**250' SQUARE FEET (MOL) CLIMATE CONTROLLED OFFICE**

**ADA COMPLIANT RESTROOMS**

**FULLY INSULATED WAREHOUSE**

**SEPERATELY METERED UTILITIES**

**C. DEREK JAMES**  
405.239.1206  
djames@priceedwards.com  
priceedwards.com



**C. DEREK JAMES**  
405.239.1206  
djames@priceedwards.com  
priceedwards.com