

720 NW 50TH ST. LOCATION! LOCATION! LOCATION!



OFFERING SUMMARY

Available SF: +/- 2,048 SF

Lease Rate: \$3,200 / per month
Full Service
with 2% annual increases

Market: Northwest

PROPERTY OVERVIEW

Location! Location! Location! (50th & Shartel) Prominently located in the heart of Oklahoma City, this modernized two-story office building is within close proximity to Crown Heights, Nichols Hills, I-235/Broadway Extension, I-44, and Western Avenue.

PROPERTY HIGHLIGHTS

- 1st floor with great lobby exposure with modern vibe
- Conference Room
- 6 Offices
- Coffee Bar
- Open Area
- Work Station
- Ample On-Site Parking

TOM FIELDS

tfields@priceedwards.com
405.239.1205
210 Park Ave, Suite 700, Oklahoma City, OK 73102
priceedwards.com

CRAIG TUCKER

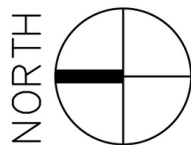
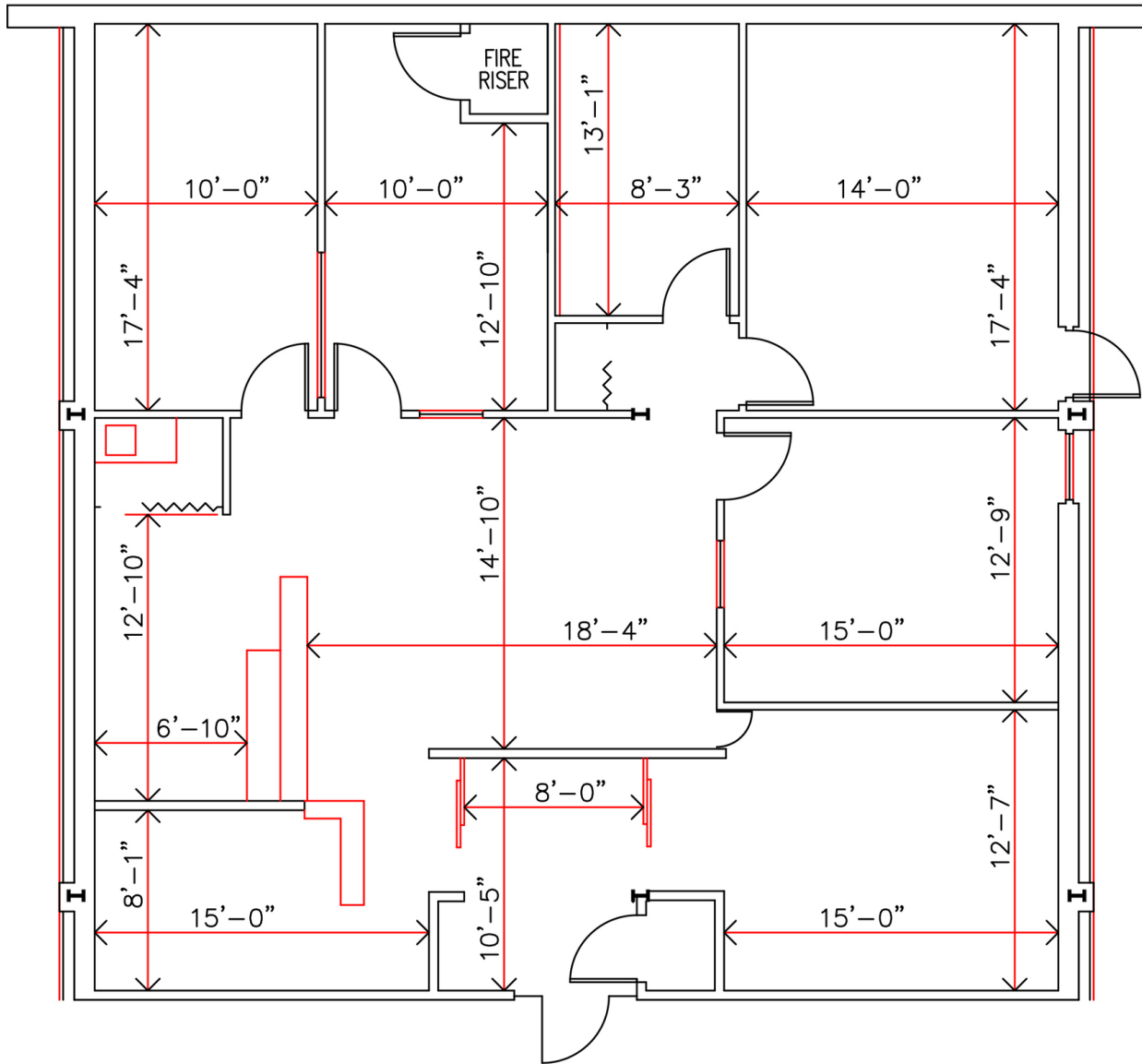
ctucker@priceedwards.com
405.843.7474
210 Park Ave, Suite 700, Oklahoma City, OK 73102
priceedwards.com

720 NW 50TH ST.

Location! Location! Location!



SUITE 100-A



720 N.W. 50

TOM FIELDS

tfields@priceedwards.com
405.239.1205
210 Park Ave, Suite 700, Oklahoma City, OK 73102
priceedwards.com

CRAIG TUCKER

ctucker@priceedwards.com
405.843.7474
210 Park Ave, Suite 700, Oklahoma City, OK 73102
priceedwards.com