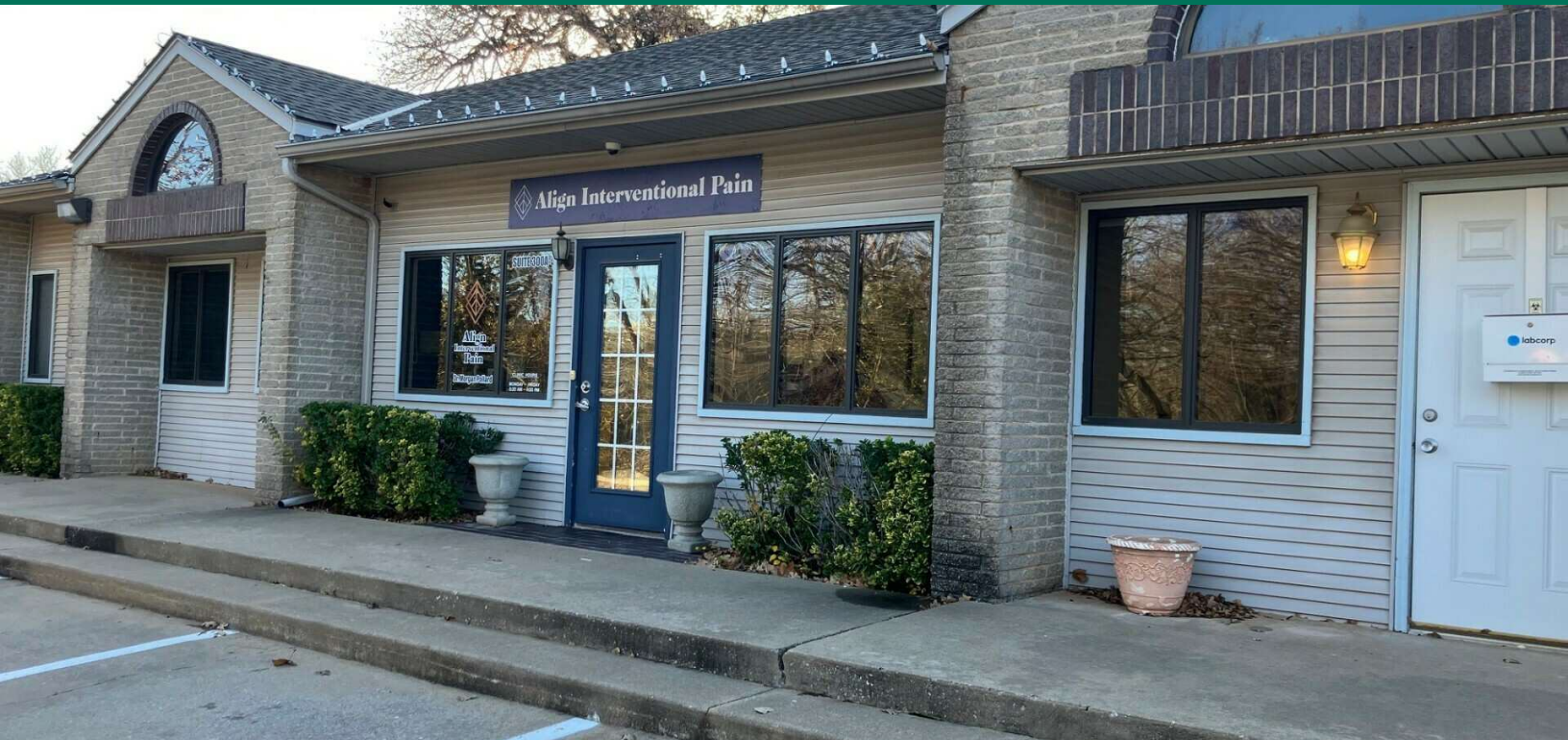


501 E 15TH STREET

EDMOND, OK 73013



LOCATION DESCRIPTION

Located on the north side of 15th Street one mile from I-235.

PROPERTY HIGHLIGHTS

- Sublease space available
- Recently remodeled
- Sublease expires 1/31/26 (term can be longer with a primary lease starting 2/1/26)
- Currently used for a Pain Management doctors office
- 3 entryways
- Tenant contracts with utility providers and pays directly
- Convenient parking immediately in front of the entry
- Handicap accessible ramps
- Could accommodate one or two providers

OFFERING SUMMARY

Suite 300 (entire building):	±4,200 RSF
-------------------------------------	------------

Lease Rate:	\$12.00 SF/yr (\$4,200 / month)
--------------------	------------------------------------

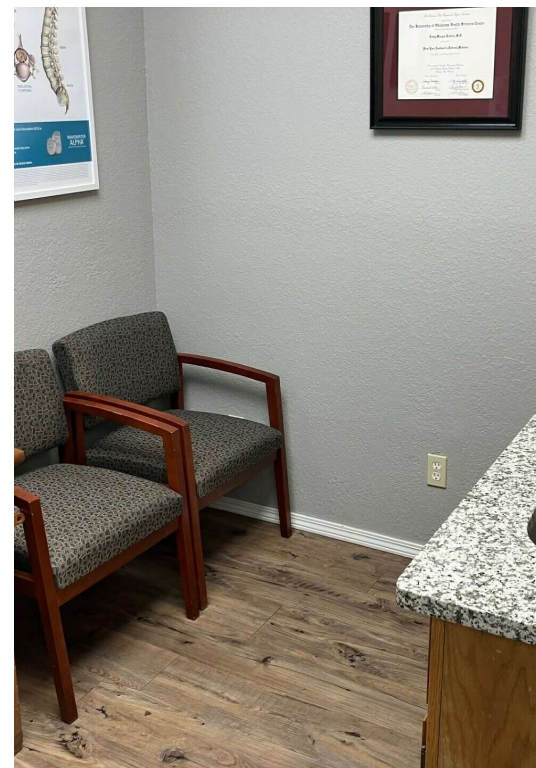
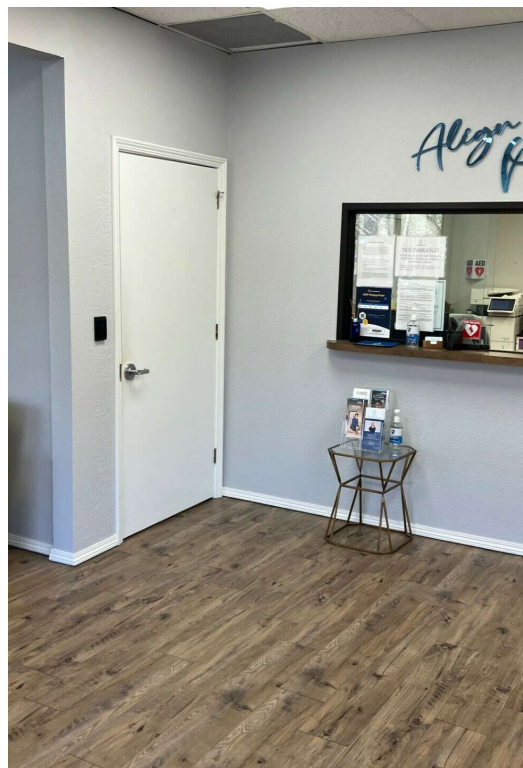
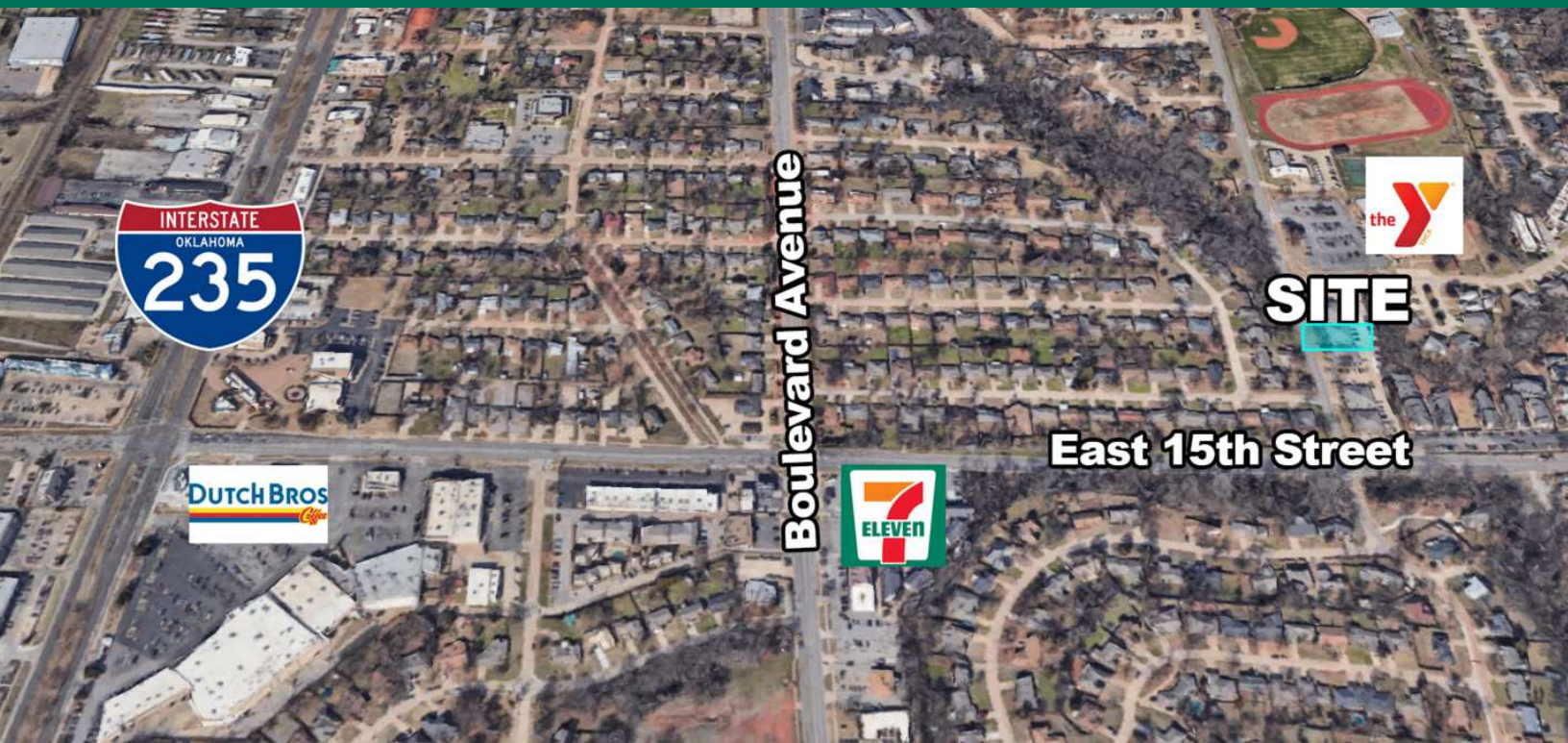
TOM FIELDS

tfields@priceedwards.com

O: 405.239.1205

501 E 15TH STREET

EDMOND, OK 73013



TOM FIELDS

tfields@priceedwards.com

O: 405.239.1205