

GAILLARDIA OFFICE PARK

4727 GAILLARDIA



PROPERTY SUMMARY

Available SF: 12,881 rsf

Lease Rate: \$24.00/SF/YR

Year Built: 2008

Building Size: 37,624 SF

PROPERTY OVERVIEW

The 4727 Gaillardia building is located in the Gaillardia Office Park, the most prestigious office development in Oklahoma City. All exterior offices and interior offices are fitted with floor to ceiling glass, taking full advantage of the natural light that floods through the expansive window lines of the building. These spaces will be leased fully furnished, allowing for immediate occupancy. This will allow a company to make a stress-free transition into new space.

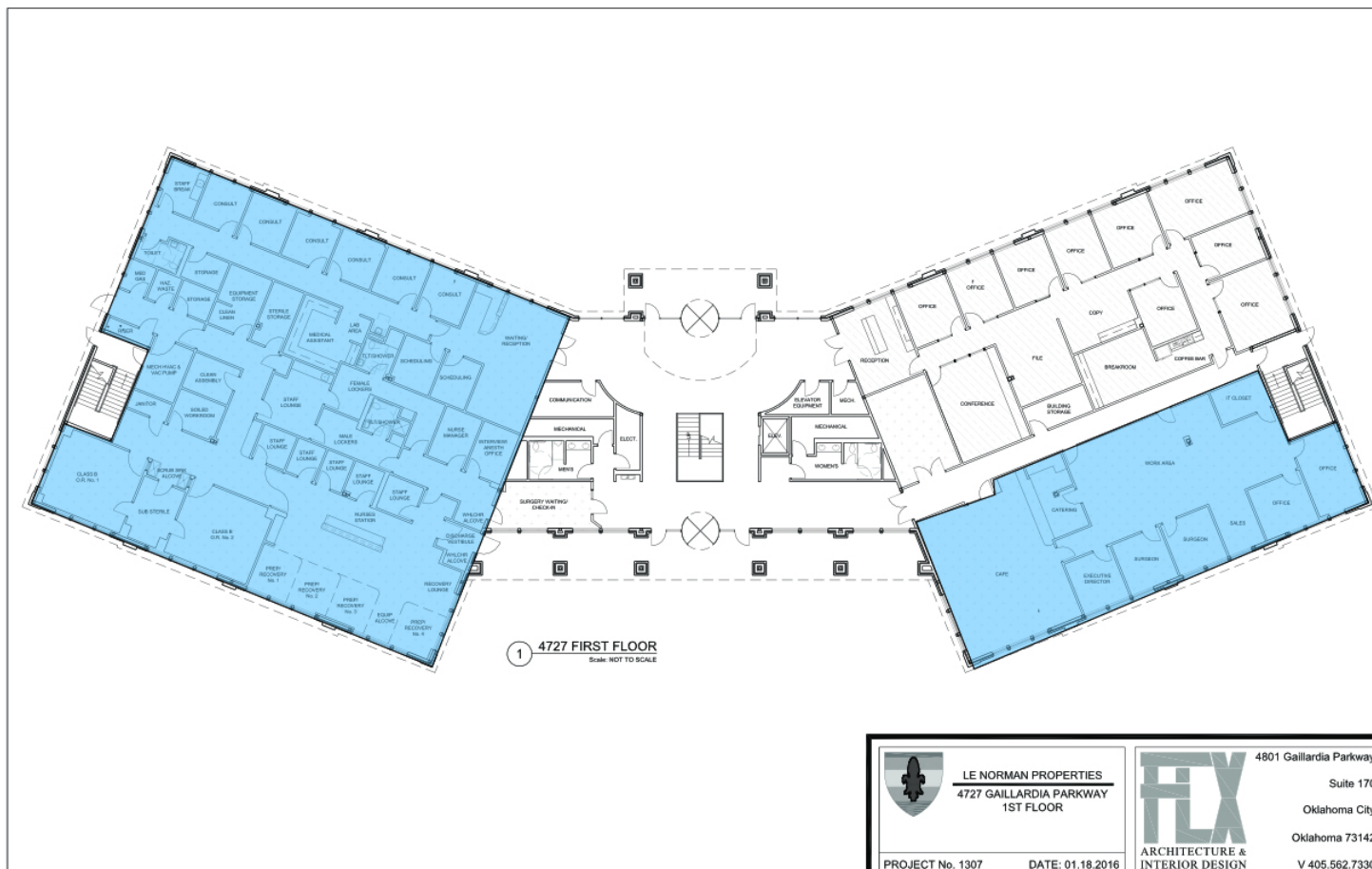
4727 Gaillardia is located less than 1 mile from several restaurants, hotels, and is easily accessible from Memorial Road, as well as the John Kilpatrick Turnpike. The building overlooks the Gaillardia Country Club, a 7,724 yard par 72, open links style golf course, anchored by a 55,000 square foot clubhouse recognized as one of the top 100 clubhouses in the world.

For more information please contact:

TRE DUPUY
tdupuy@priceedwards.com
405.843.7474

4727 GAILLARDIA

FLOOR PLAN SUITE 150 - 12,881 RSF



 <p>LE NORMAN PROPERTIES 4727 GAILLARDIA PARKWAY 1ST FLOOR</p>	<p>4801 Gaillardia Parkway Suite 170 Oklahoma City Oklahoma 73142 V 405.562.7330</p>
	<p>PROJECT No. 1307 DATE: 01.18.2016</p>

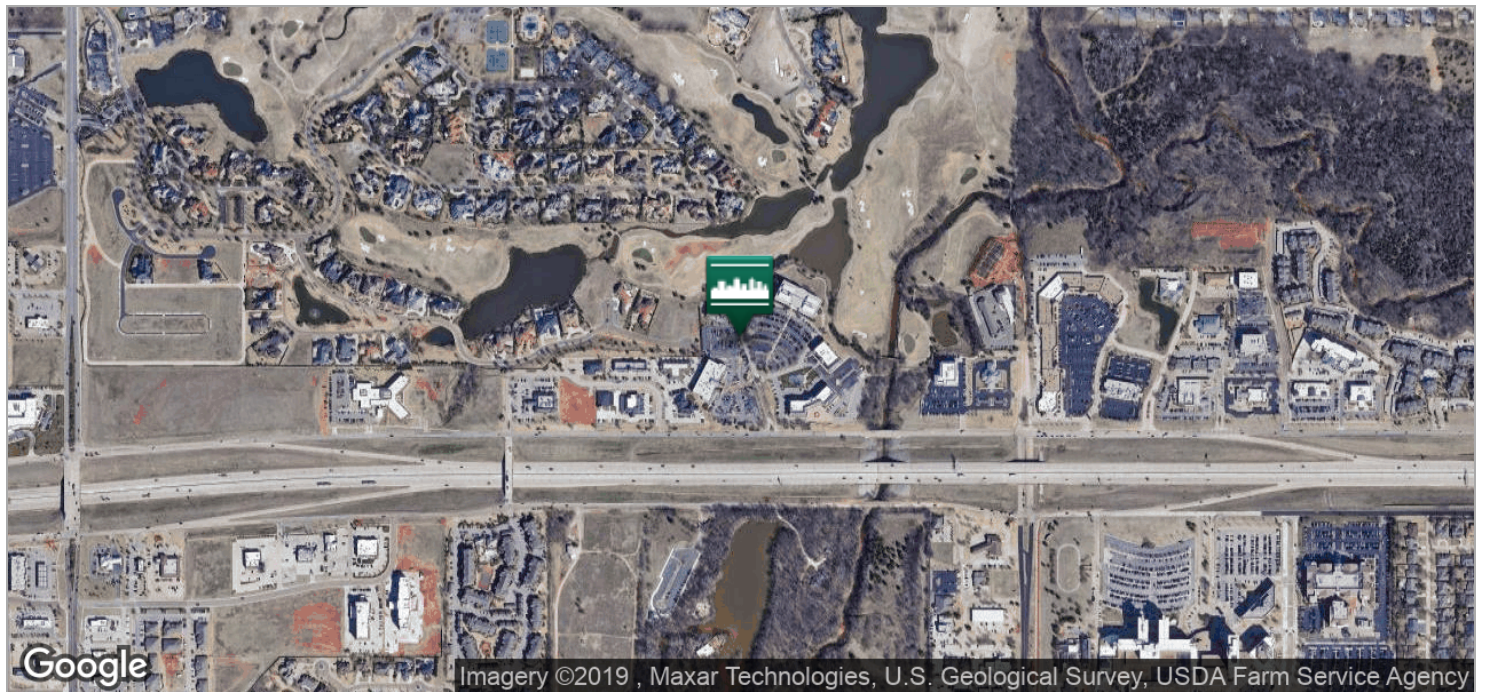
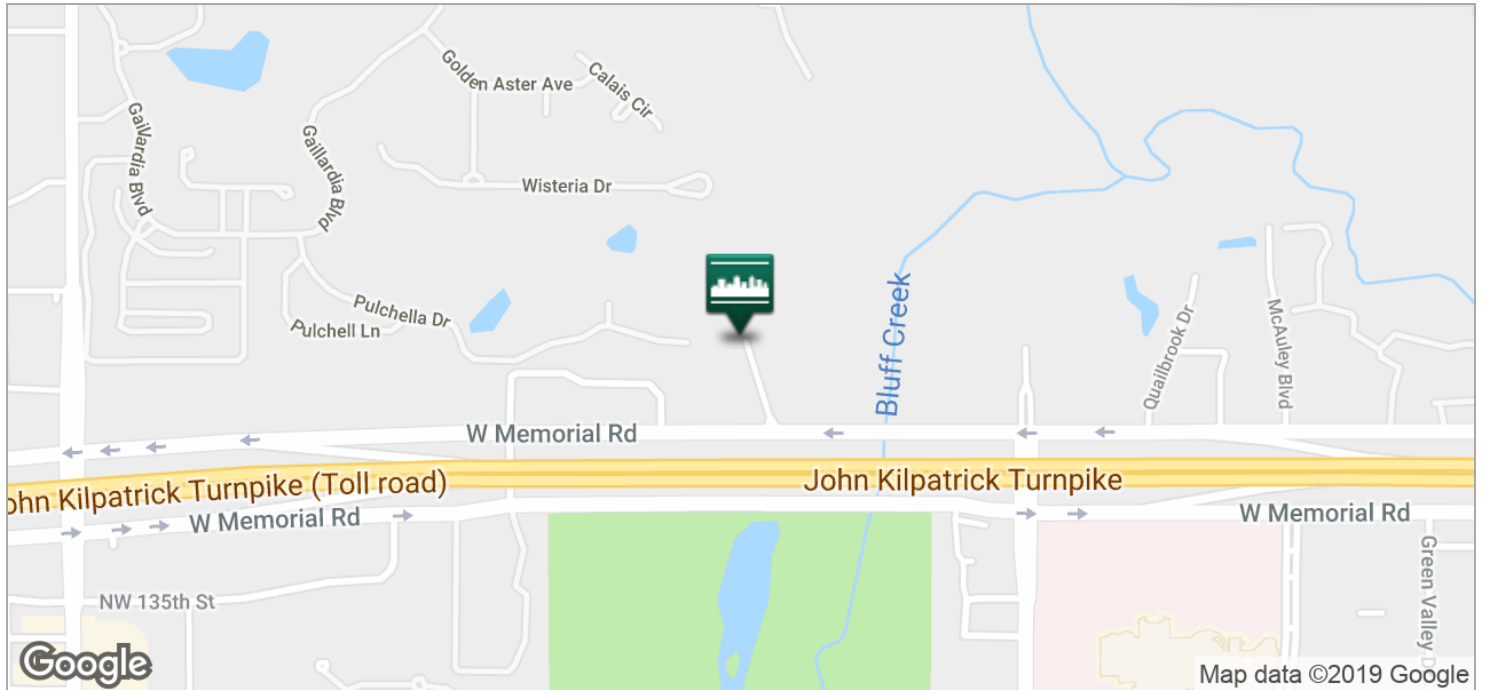
FLX ARCHITECTURE & INTERIOR DESIGN

For more information please contact:

TRE DUPUY
tdupuy@priceedwards.com
405.843.7474

4727 GAILLARDIA

LOCATION MAPS



For more information please contact:

TRE DUPUY

tdupuy@priceedwards.com
405.843.7474