

4300 AMELIA EARHART LANE

WILL ROGERS AIRPORT OFFICE



OFFERING SUMMARY

Available SF: 5,000

Lease Rate: \$12.75 MG

Parking: non-reserved,
surface parking

Quadrant: Southwest

PROPERTY OVERVIEW

The Building sits on an expansive lot with on-building signage available and viewable from Terminal Drive, the main road to and from the airport arrival/departure gates. Employees and guests have available twenty two parking spaces. The building features an expansive ceiling height, nice glass lines and tinted windows. It has a full sized break area, a sitting patio and multiple private offices and training/conference rooms. There are cubicles in-place and available to use along with other office furnishings. The building is currently undergoing a major renovation including new heating and cooling systems, replacing windows or, window film, new ceiling tiles, painting, carpeting and restroom repairs.

LOCATION OVERVIEW

The stand alone office building situated next to the 99's Women's Air Museum is located on Will Rogers Airport Trust land. This building has easy access to all major thoroughfares and six miles from the central business district .

For more information please contact:

C. DEREK JAMES

djames@priceedwards.com
405.239.1206

4300 AMELIA EARHART LANE

ADDITIONAL PHOTOS



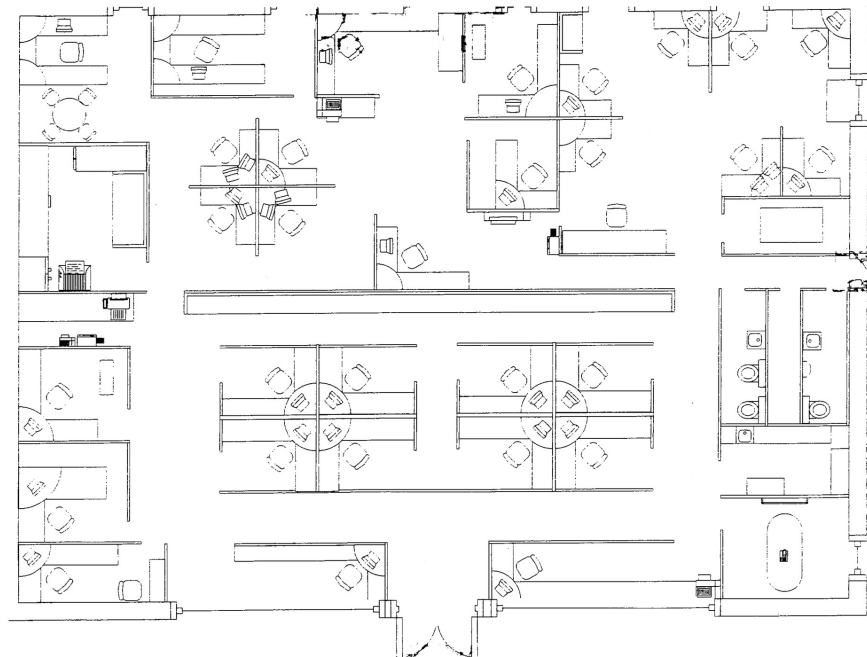
For more information please contact:

C. DEREK JAMES

djames@pricedwards.com
405.239.1206

4300 AMELIA EARHART LANE

ADDITIONAL PHOTOS



For more information please contact:

C. DEREK JAMES

djames@priceedwards.com
405.239.1206

4300 AMELIA EARHART LANE

LOCATION MAPS



For more information please contact:

C. DEREK JAMES

djames@priceedwards.com
405.239.1206