

## 3325 FRENCH PARK DRIVE

## EDMOND, OK 73034



### LOCATION DESCRIPTION

Located in East Edmond; French Park is on the south side of E. 2nd Street which is located 3/4 mile west of I-35.

### PROPERTY HIGHLIGHTS

- Ample on-site parking
- Executive office space
- Locally owned and managed
- Includes normal utilities, janitorial & maintenance.
- Tenant pays internet/phone

### OFFERING SUMMARY

<b>Suite 13:</b>	±1,050 RSF \$1,400 / month with 3% annual increases
------------------	---

<b>Suite 14:</b>	±1,148 RSF \$1,500 / month with 3% annual increases
------------------	---

<b>Market:</b>	Edmond
----------------	--------

<b>Class:</b>	B
---------------	---

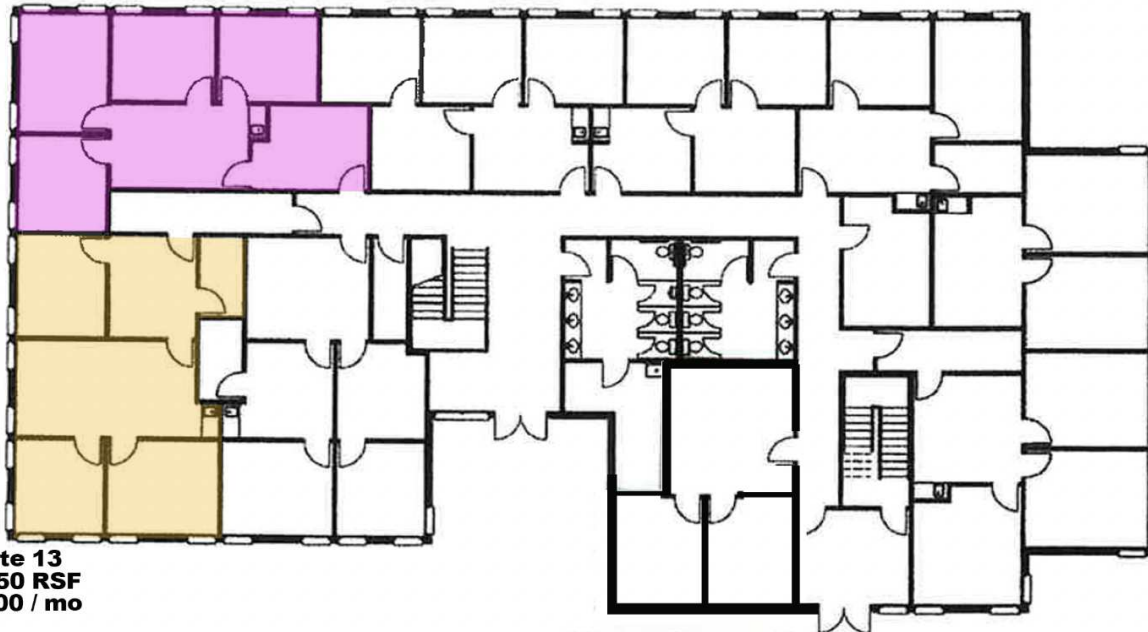
### TOM FIELDS

tfields@priceedwards.com  
 O: 405.239.1205

## 3325 FRENCH PARK DRIVE

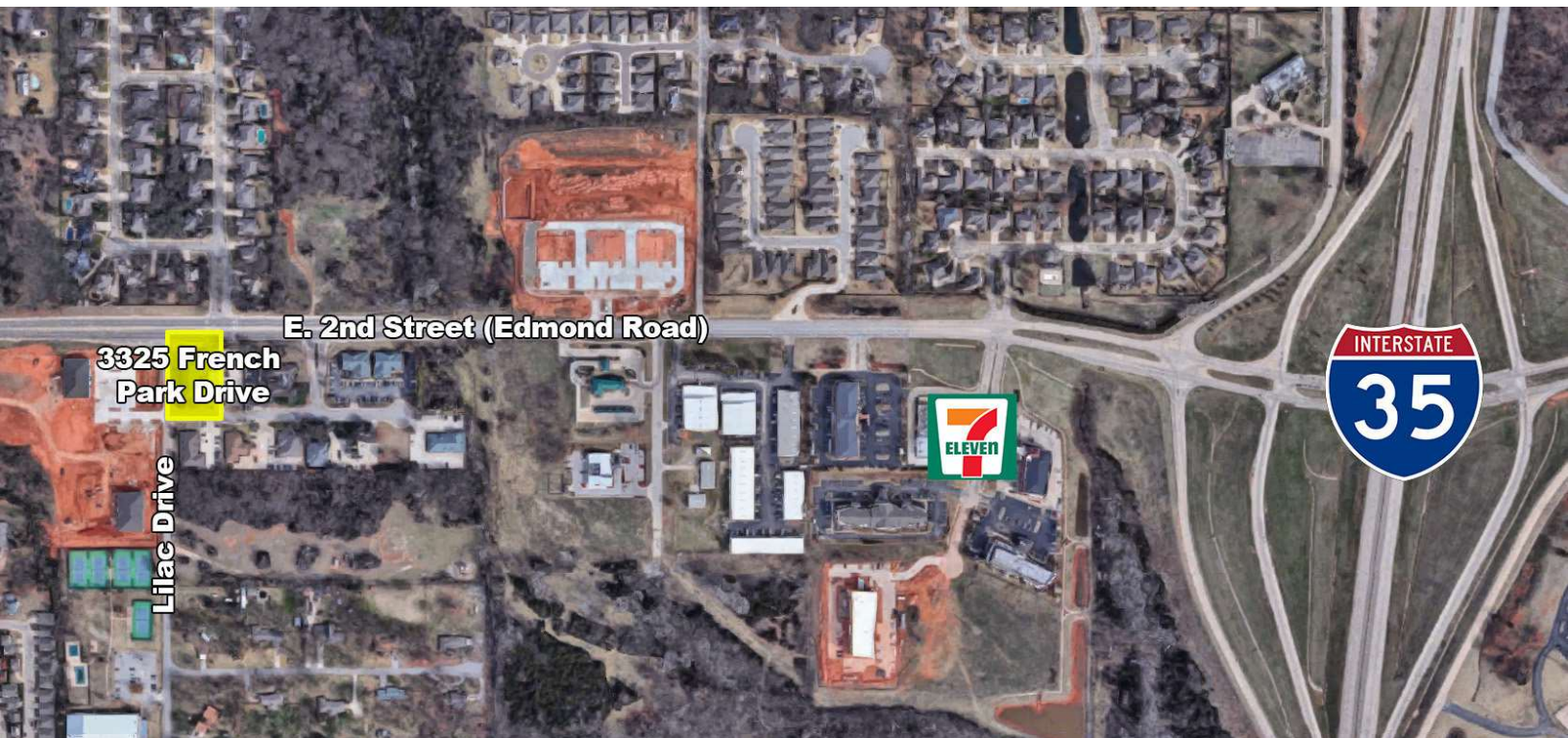
EDMOND, OK 73034

**Suite 14**  
±1,148 RSF  
\$1,500 / mo



**Suite 13**  
±1,050 RSF  
\$1,400 / mo

**\*Spaces can be combined**



**TOM FIELDS**

tfields@priceedwards.com

O: 405.239.1205