

3325 FRENCH PARK DRIVE

EDMOND, OK 73034



LOCATION DESCRIPTION

Located in East Edmond; French Park is on the south side of E. 2nd Street which is located 3/4 mile west of I-35.

PROPERTY HIGHLIGHTS

- Ample on-site parking
- Executive office space
- Locally owned and managed
- Includes normal utilities, janitorial & maintenance.
- Tenant pays internet/phone

OFFERING SUMMARY

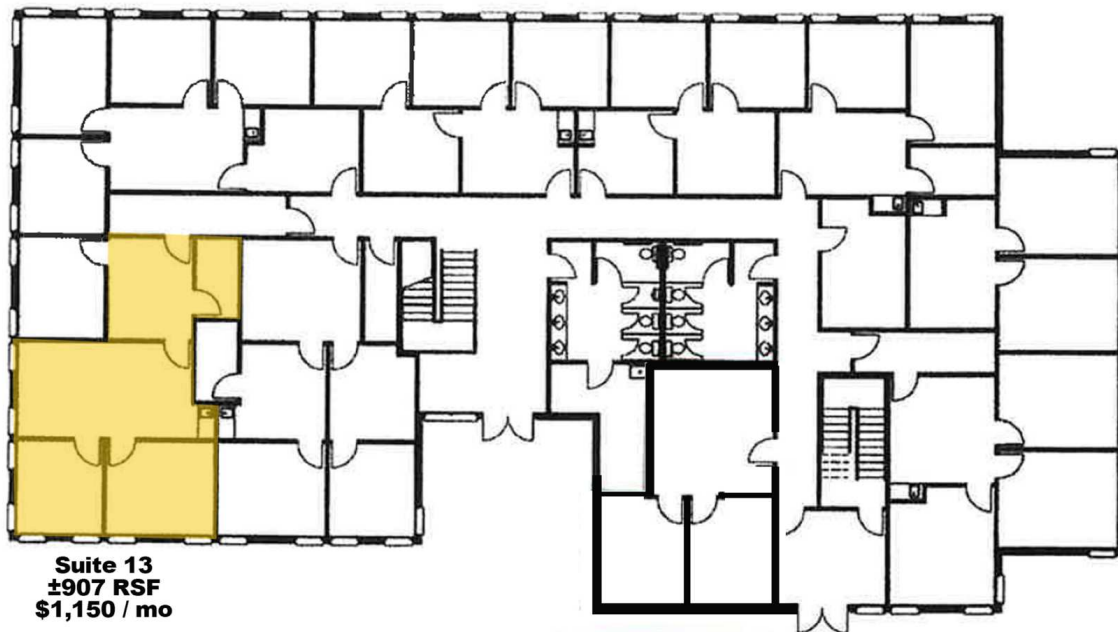
Suite 13:	±907 RSF \$1,150 / month with 3% annual increases
Market:	Edmond
Class:	B

TOM FIELDS

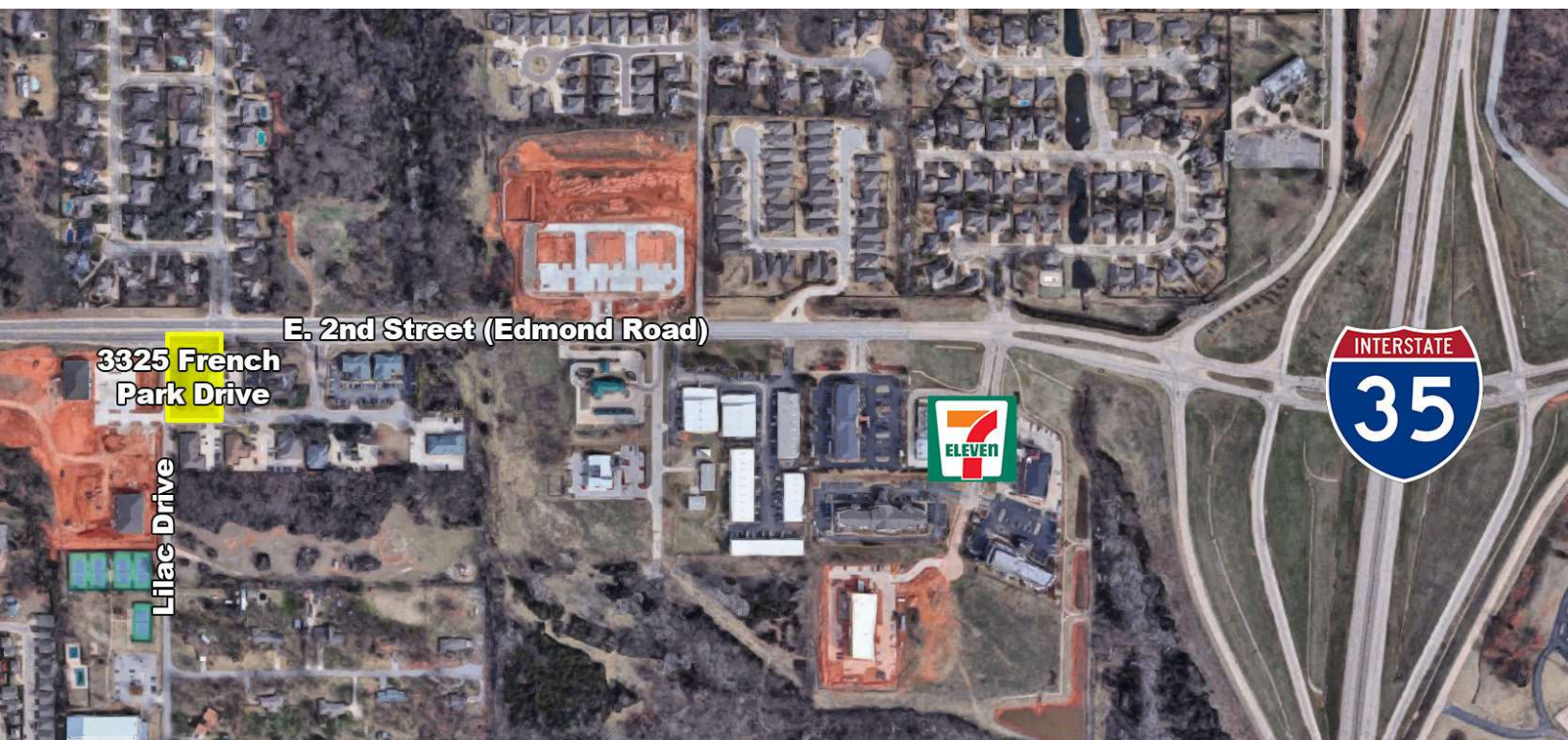
tfields@priceedwards.com
O: 405.239.1205

3325 FRENCH PARK DRIVE

EDMOND, OK 73034



Suite 13
±907 RSF
\$1,150 / mo



TOM FIELDS

tfields@priceedwards.com

O: 405.239.1205