

SALE PRICE

\$700,000

VIEW 3D TOUR

OFFERING SUMMARY

Available SF:	7,084 SF
Lot Size:	0.64 Acres
Year Built:	1986
Building Size:	7,084
Zoning:	I-1 with an AE-2 Overlay
Price / SF:	\$98.81
	111521

PROPERTY OVERVIEW

3300 S Lakeside Drive features over 15 offices over 7000+ Sf of Class B office space in Southwest Oklahoma City. Located one block west of Meridan Avenue south of SW 29th St this property includes ADA compliant bathrooms, a large conference room, a large kitchenette/breakroom, and several multi-desk open spaces. The office is partially furnished with desks, filing cabinets, cubicles, and a large conference table, and is wired for Cox Cable phone and internet. Upstairs is built out for additional office space or storage.

PROPERTY HIGHLIGHTS

- Sales Price: \$700,000
- Lease Rate: \$11/SF MG
- Seller Financing Available
- 15+ Office spaces
- Large Conference Room & Kitchenette/Breakroom
- 45 Parking Spaces (6.35/1,000 SF)
- 12' x 16' Tornado Shelter on-site

AARON DIEHL
405.843.7474 x255
adiehl@priceedwards.com
priceedwards.com

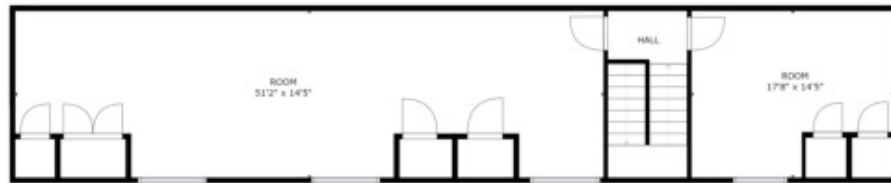
IAN SELF
405.239.1271
iself@priceedwards.com
priceedwards.com



AARON DIEHL
405.843.7474 x255
adiehl@priceedwards.com
priceedwards.com

IAN SELF
405.239.1271
iself@priceedwards.com
priceedwards.com

360° VIRTUAL TOUR



GROSS INTERNAL AREA
FLOOR 1: 5579 sq ft, FLOOR 2: 1075 sq ft
TOTAL: 6654 sq ft

SIZES AND DIMENSIONS ARE APPROXIMATE, ACTUAL MAY VARY.

FLOOR 1

AARON DIEHL
405.843.7474 x255
adiehl@priceedwards.com
priceedwards.com

IAN SELF
405.239.1271
iself@priceedwards.com
priceedwards.com