

3233 E MEMORIAL RD

EDMOND, OK 73013



PROPERTY DESCRIPTION

- 3 offices
- Wet bar
- Reception area
- Place for a copier
- Restroom
- Convenient parking in front of office

LOCATION DESCRIPTION

Located east of Bryant on the north side of Memorial Road just one mile from the John Kilpatrick Turnpike.

OFFERING SUMMARY

Suite 102:	±1,015 RSF
Lease Rate:	\$1,100 / month with 3% annual increases Tenant pays utilities directly to provider
Building Class:	B

TOM FIELDS

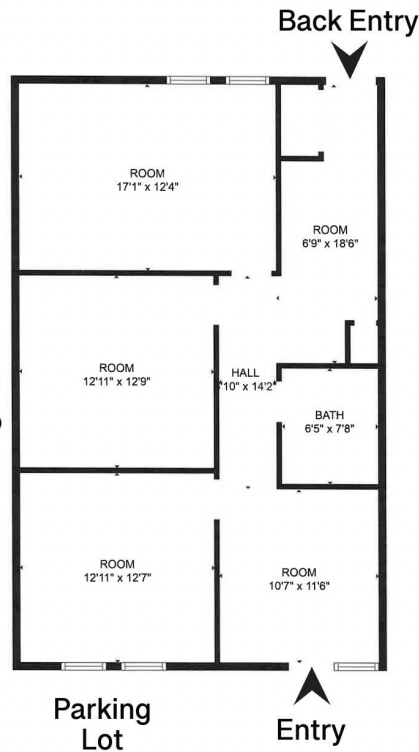
tfields@priceedwards.com
O: 405.239.1205

3233 E MEMORIAL RD

EDMOND, OK 73013



Suite 102
±1,015 RSF
\$1,100 / mo



TOM FIELDS

tfields@priceedwards.com

O: 405.239.1205