

## 3233 E MEMORIAL RD

## EDMOND, OK 73013



### PROPERTY DESCRIPTION

- 3 offices
- Wet bar
- Reception area
- Place for a copier
- Restroom
- Convenient parking in front of office

### LOCATION DESCRIPTION

Located east of Bryant on the north side of Memorial Road just one mile from the John Kilpatrick Turnpike.

### OFFERING SUMMARY

<b>Suite 102:</b>	±1,015 RSF
-------------------	------------

<b>Lease Rate:</b>	\$999 / month with 3% annual increases Tenant pays utilities directly to provider
--------------------	--

<b>Building Class:</b>	B
------------------------	---

### TOM FIELDS

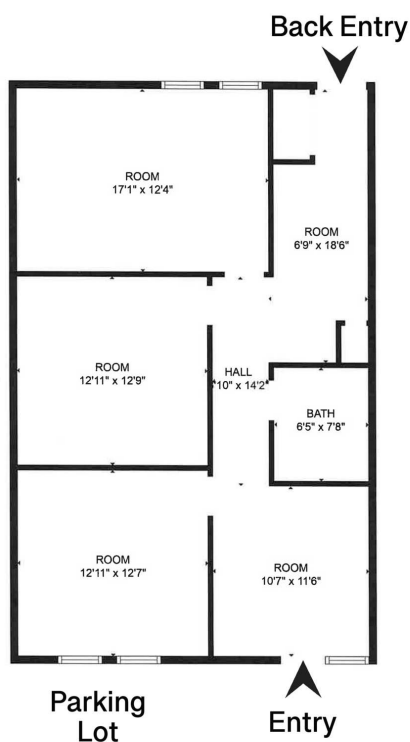
tfields@priceedwards.com  
O: 405.239.1205

## 3233 E MEMORIAL RD

## EDMOND, OK 73013



Suite 102  
±1,015 RSF  
\$999 / mo



**TOM FIELDS**

tfields@priceedwards.com

O: 405.239.1205