



## OFFERING SUMMARY

**Available SF:** 1,292 - 21,526 SF

**Lease Rate:** \$20.00 SF/YR

**Lease Type:** Full Service

**Lot Size:** 5 Acres

**Year Built:** 1999

**Building Size:** 41,992 SF

**Submarket:** Memorial Corridor

## PROPERTY HIGHLIGHTS

- Inviting two story lobby atrium
- Flexible floor layout
- Close proximity to several business oriented amenities
- Video security surveillance system
- Easy access to John Kilpatrick Turnpike, Lake Hefner Pkwy & I-235
- Abundant surface parking
- Portico drive
- Management and on-site engineering staff
- Local ownership

**TRE DUPUY**  
405.843.7474  
tdupuy@priceedwards.com  
priceedwards.com

**IAN SELF**  
405.239.1271  
iself@priceedwards.com  
priceedwards.com



Exterior



Click Link for 3D Walkthrough of lobby: <https://my.matterport.com/show/?m=7aoVnJ2nEs1>

**TRE DUPUY**  
405.843.7474  
tdupuy@priceedwards.com  
priceedwards.com

**IAN SELF**  
405.239.1271  
iself@priceedwards.com  
priceedwards.com

# 3121 Quail Springs Parkway

3121 Quail Springs Parkway, Oklahoma City, OK 73134

**Lease Rate:** \$20.00 SF/YR      **Total Space:** 1,292 - 21,526 SF  
**Lease Type:** Full Service      **Lease Term:** Negotiable

SPACE	SPACE USE	LEASE RATE	LEASE TYPE	SIZE (SF)
Suite 130	Office Building	\$20.00 SF/YR	Full Service	1,289 SF
Suite 150	Office Building	\$20.00 SF/YR	Full Service	1,293 SF
Suite 170	Office Building	\$20.00 SF/YR	Full Service	2,173 SF
Suite 160	Office Building	\$20.00 SF/YR	Full Service	3,113 SF
Suite 200	Office Building	\$20.00 SF/YR	Full Service	21,526 SF

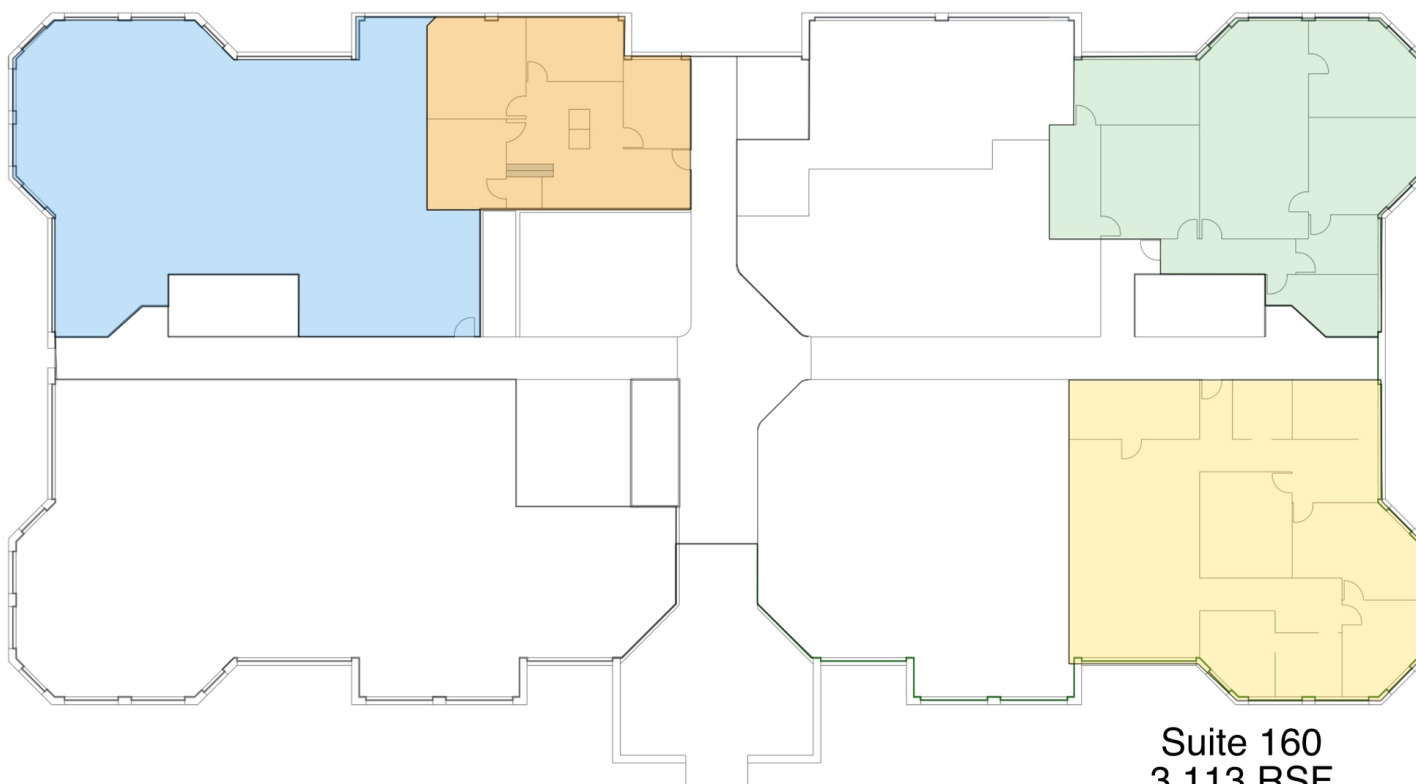
**TRE DUPUY**  
405.843.7474  
tdupuy@priceedwards.com  
priceedwards.com

**IAN SELF**  
405.239.1271  
iself@priceedwards.com  
priceedwards.com

**Suite 150**  
3,165 RSF

**Suite 130**  
1,292 RSF

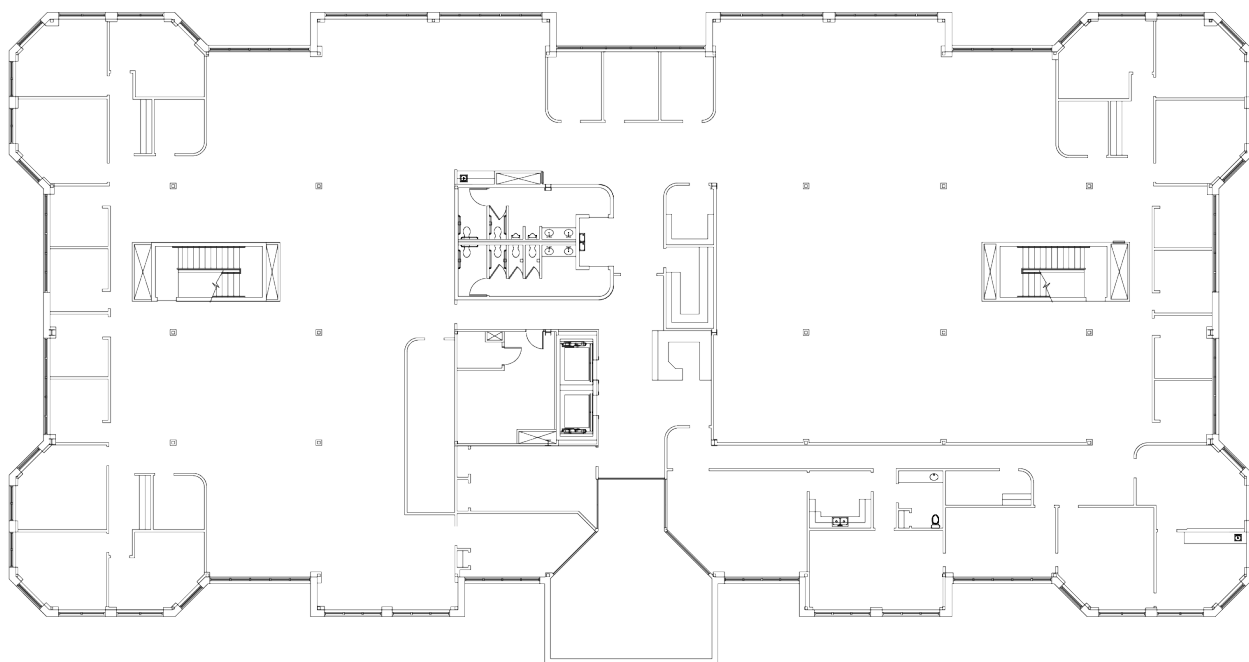
**Suite 170**  
2,173 RSF



**Suite 160**  
3,113 RSF

**TRE DUPUY**  
405.843.7474  
tdupuy@pricedwards.com  
pricedwards.com

**IAN SELF**  
405.239.1271  
iself@pricedwards.com  
pricedwards.com



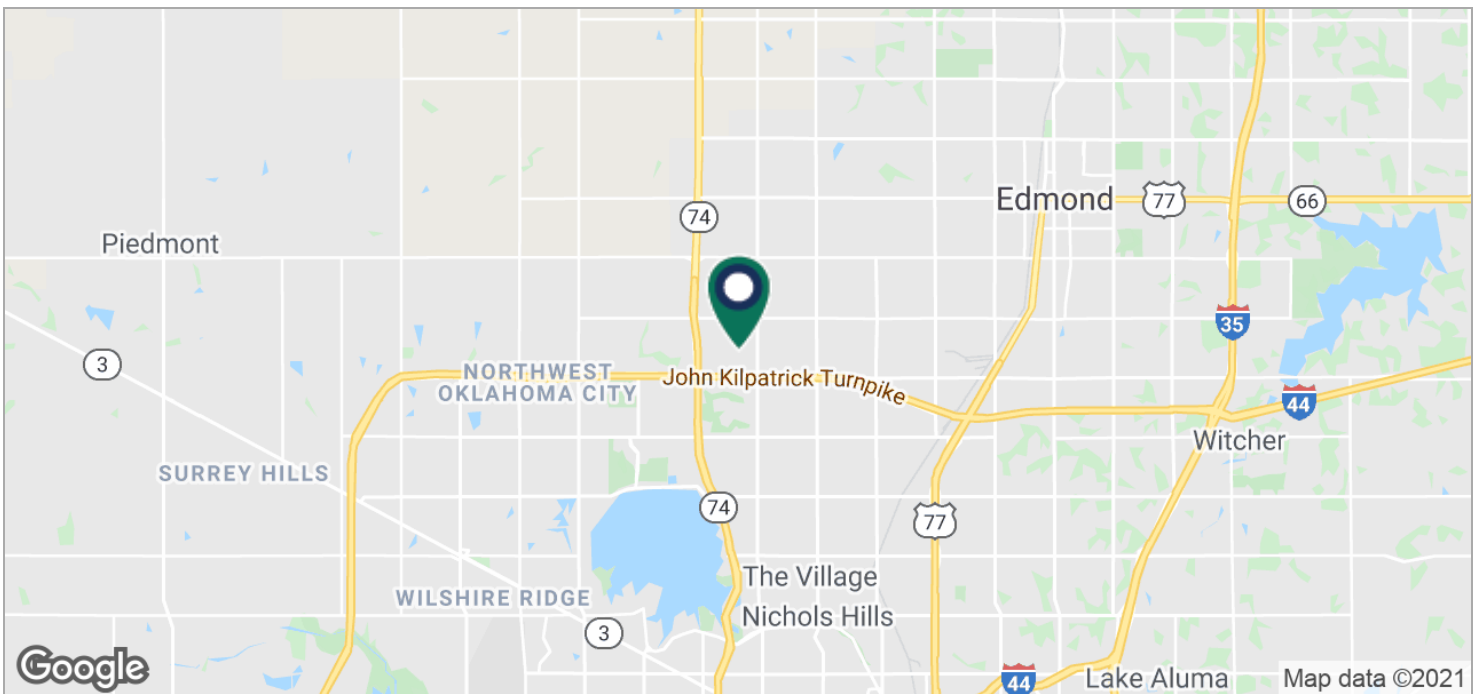
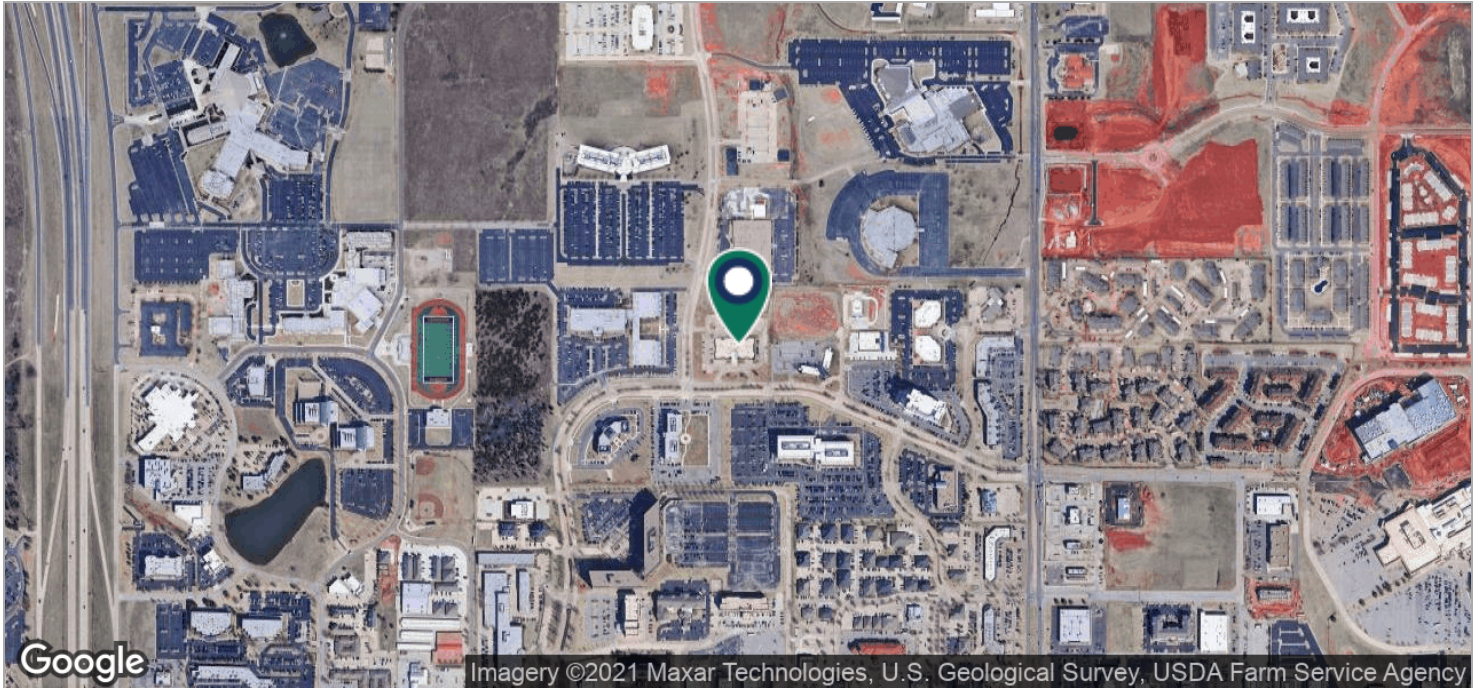
**2** SUITE 200  
21,526 RSF

**TRE DUPUY**  
405.843.7474  
tdupuy@priceedwards.com  
priceedwards.com

**IAN SELF**  
405.239.1271  
iself@priceedwards.com  
priceedwards.com

# 3121 Quail Springs Parkway

3121 Quail Springs Parkway, Oklahoma City, OK 73134



**TRE DUPUY**  
405.843.7474  
tdupuy@pricedwards.com  
pricedwards.com

**IAN SELF**  
405.239.1271  
iself@pricedwards.com  
pricedwards.com