

## 2801 PARKLAWN DRIVE

## MIDWEST CITY, OK 73110



### LOCATION DESCRIPTION

Situated in Midwest City, OK, this thriving area offers convenient access to Tinker Air Force Base, Midwest Regional Medical Center, and an abundance of well-regarded restaurants and retail establishments. The vibrant community fosters a conducive environment for business, with notable corporations and government entities nearby. The property's prime location ensures a strong foundation for your office building investment, inviting you to capitalize on the area's promising economic landscape and strategic positioning for sustained prosperity.

### PROPERTY HIGHLIGHTS

- Renovated in 2022
- Prime East area location
- Modernized amenities
- Strategic investment opportunity
- Classic charm with contemporary appeal
- Ideal for office building investors

### C. DEREK JAMES

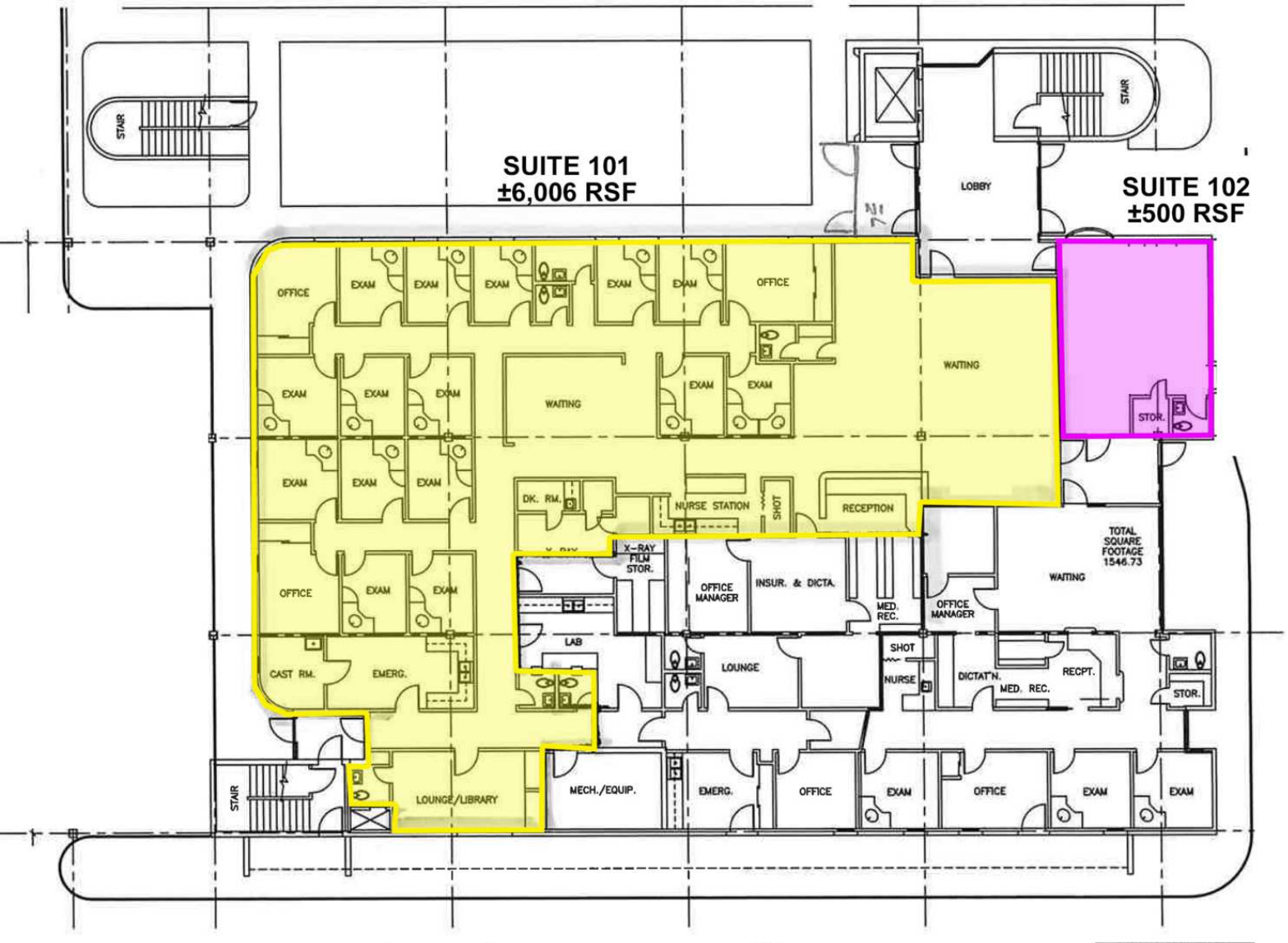
djames@priceedwards.com  
O: 405.239.1206

### OFFERING SUMMARY

<b>Suite 101:</b>	±6,006 RSF
<b>Suite 102:</b>	±500 RSF
<b>Lease Rate:</b>	\$16.00 SF/yr (Full Service)
<b>Building Size:</b>	±50,148 SF
<b>Class:</b>	C

## 2801 PARKLAWN DRIVE

## MIDWEST CITY, OK 73110



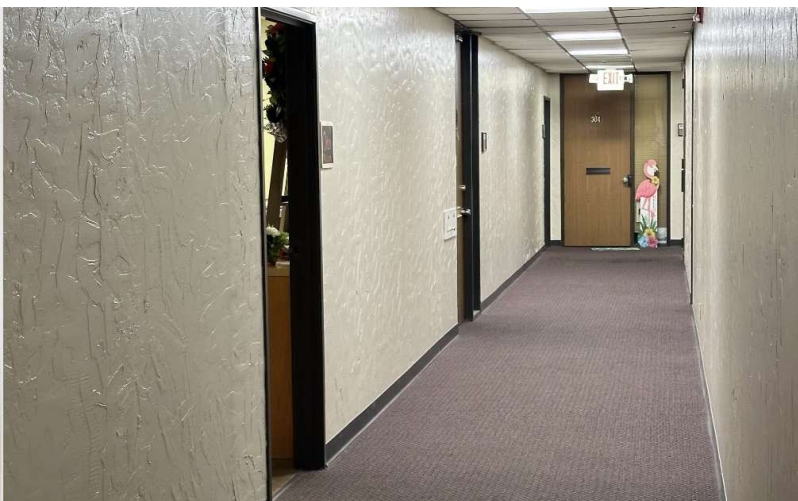
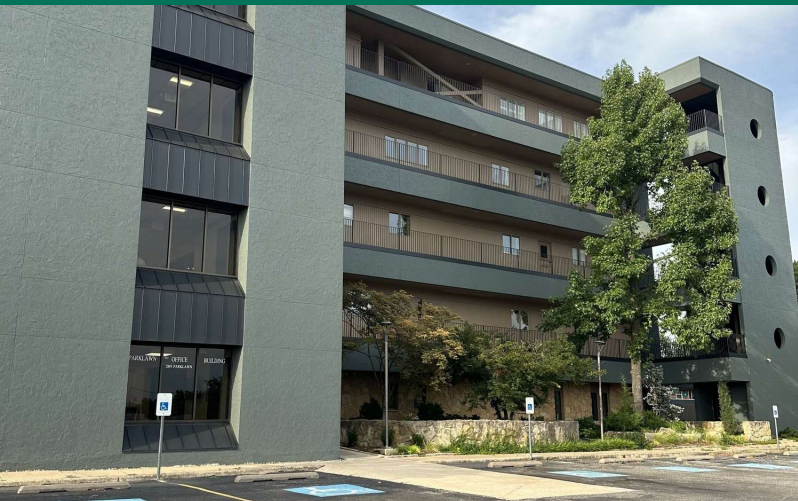
**C. DEREK JAMES**

djames@priceedwards.com

O: 405.239.1206

## 2801 PARKLAWN DRIVE

## MIDWEST CITY, OK 73110



**C. DEREK JAMES**

djames@priceedwards.com

O: 405.239.1206