

# 10800 S MERIDIAN

Industrial Building For Lease



## OFFERING SUMMARY

Available SF: 6,500 SF

Lease Rate: \$6,500 PM NNN

Lot Size: 1 Acres

Zoning: I-2

## PROPERTY OVERVIEW

New 6,500 SF industrial building with 24' clear height, drive through bays and 1.5 acres graveled/fenced yard. Estimated completion will be December 1, 2019.

## PROPERTY HIGHLIGHTS

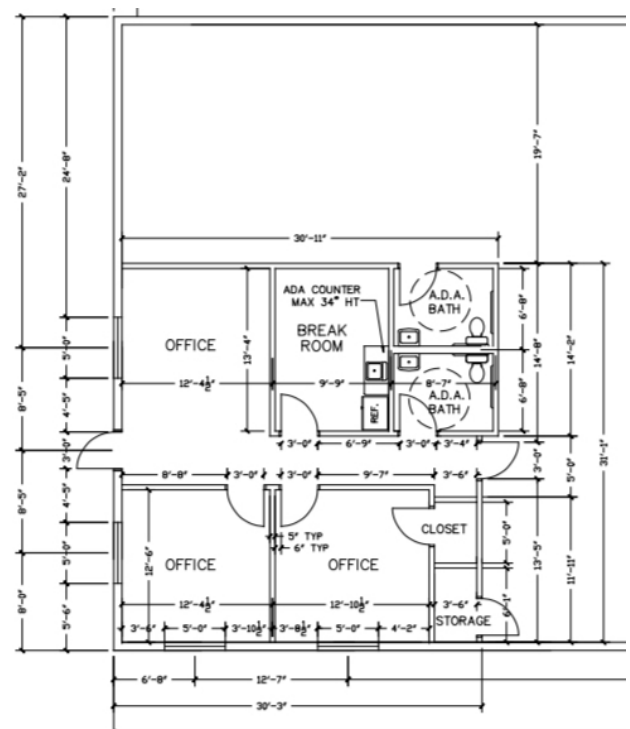
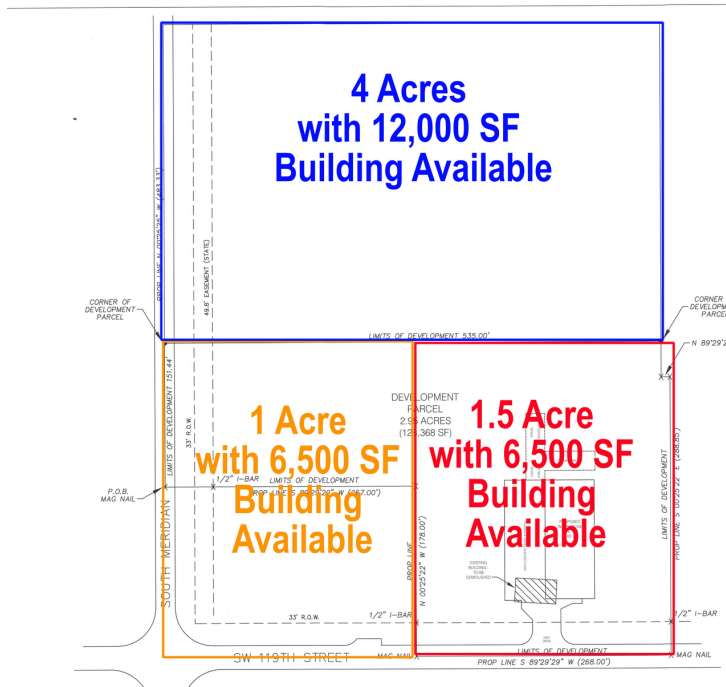
- 6,500 SF Building
- 24' Clear Height
- 14' Overhead Doors
- 2 Sets of Drive Through Bays
- 942 SF of Office Space
- 1.5 Acres Fenced & Graveled
- 3 Phase Power
- \*Optional 5 Ton Bridge Crane\*

## DANNY RIVERA

Industrial Specialist  
drivera@priceedwards.com  
405.408.5449  
210 Park Ave, Suite 700, Oklahoma City, OK 73102  
priceedwards.com

# 4495 SW 119TH ST.

Industrial Building For Lease



**DANNY RIVERA**

Industrial Specialist  
drivera@priceedwards.com  
405.408.5449  
210 Park Ave, Suite 700, Oklahoma City, OK 73102  
priceedwards.com

The information above has been obtained from sources believe reliable. While we do not doubt its accuracy, we have not verified it and make no guarantee, warranty, or representation about it. You and your legal and technical advisors should conduct a careful, independent investigation of the property to determine to your satisfaction to the suitability of the property for your needs.