

1601 MEDICAL CENTER DRIVE

EDMOND, OK 73034



LOCATION DESCRIPTION

Located off of Bryant Avenue just north of 2nd Street in Edmond.

PROPERTY HIGHLIGHTS

- Located in the heart of Edmond just east of OU Medical Center
- Near numerous restaurants
- Quick access to I-35
- Full Service Lease
- Landlord pays maintenance and utilities
- Tenant is responsible for phone and internet

OFFERING SUMMARY

2nd Floor

Suite 11: ±1,100 SF

Lease Rate: \$1,200 / month
with 3% annual increases

Building Class: B

Market: Edmond

TOM FIELDS

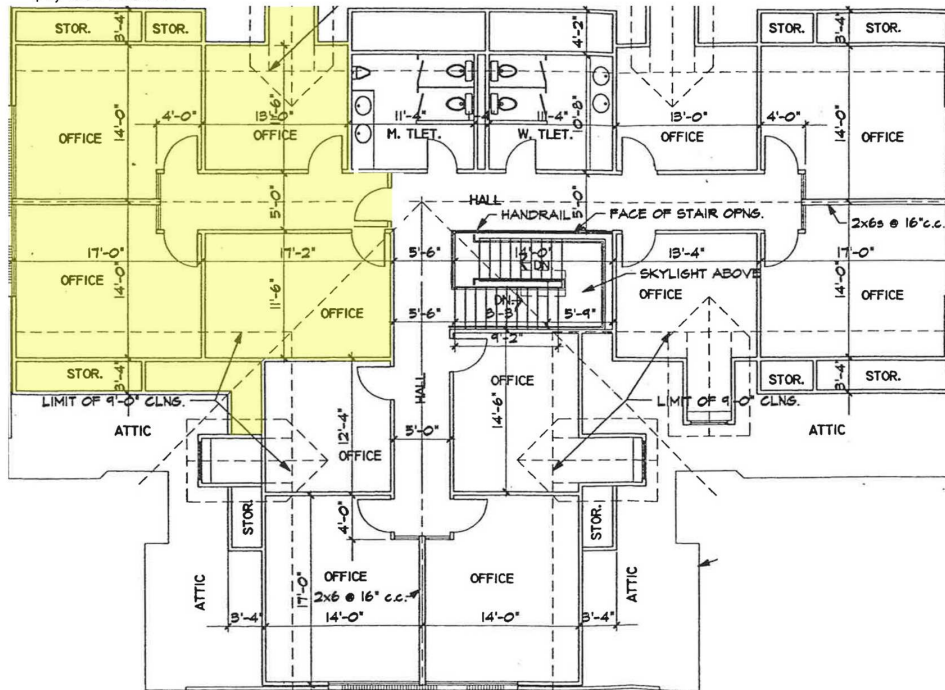
tfields@priceedwards.com

O: 405.239.1205

1601 MEDICAL CENTER DRIVE

EDMOND, OK 73034

SUITE 11
±1,100 RSF
\$1,200 / MONTH



TOM FIELDS

tfields@priceedwards.com

O: 405.239.1205