

1601 MEDICAL CENTER DRIVE

EDMOND, OK 73034



LOCATION DESCRIPTION

Located off of Bryant Avenue just north of 2nd Street in Edmond.

PROPERTY HIGHLIGHTS

- Located in the heart of Edmond just east of OU Medical Center
- Near numerous restaurants
- Quick access to I-35
- Full Service Lease
- Landlord pays maintenance and utilities
- Tenant is responsible for phone and internet

OFFERING SUMMARY

2nd Floor

Suite 11:	±1,100 SF \$1,300 / month with 3% annual increases
------------------	--

Suite 12:	±1,100 SF \$1,300 / month with 3% annual increases
------------------	--

Building Class:	B
------------------------	---

Market:	Edmond
----------------	--------

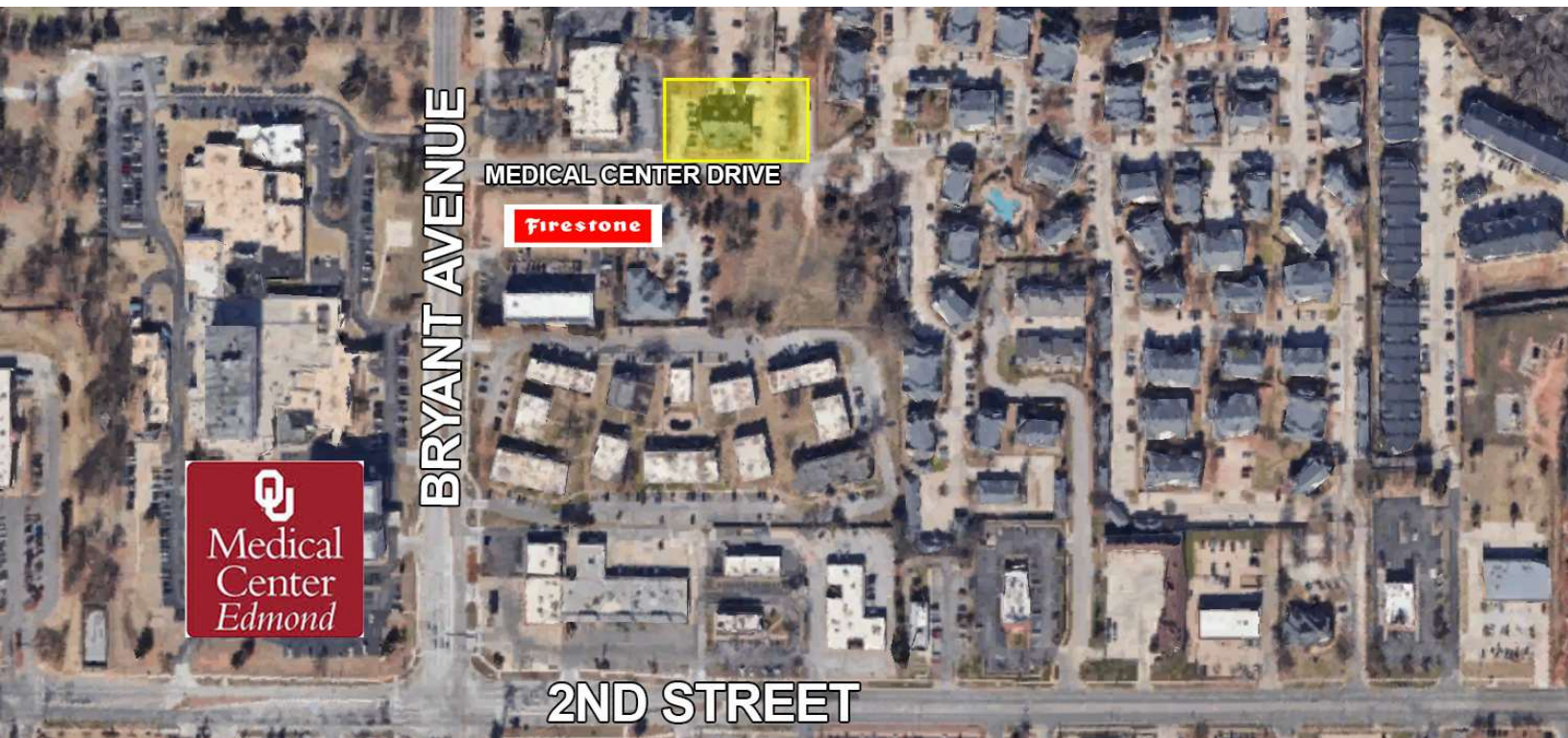
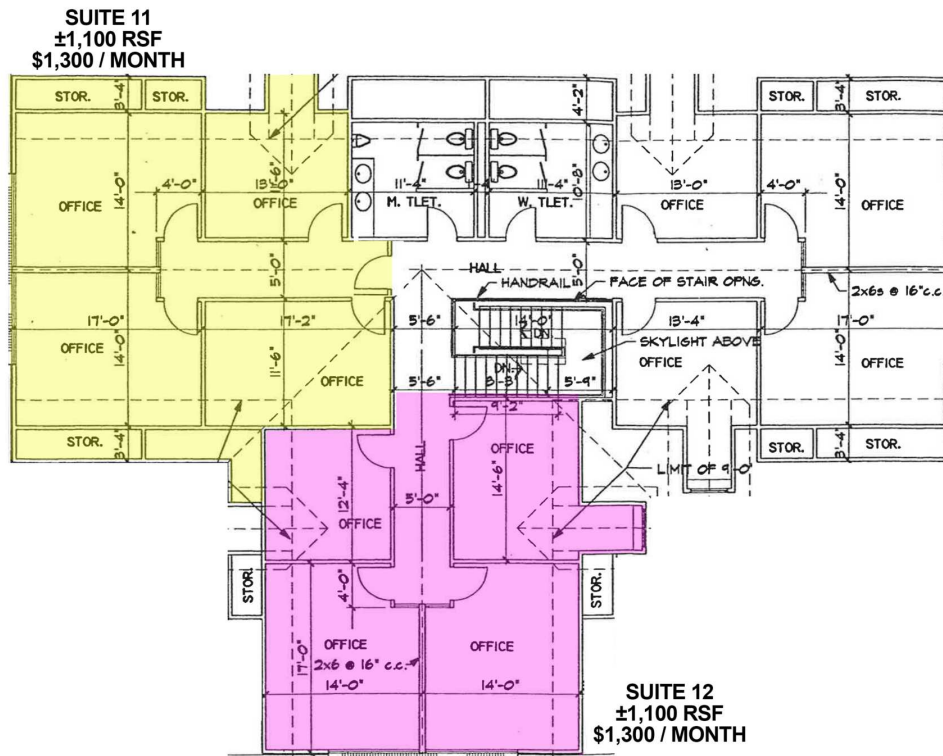
TOM FIELDS

tfields@priceedwards.com

O: 405.239.1205

1601 MEDICAL CENTER DRIVE

EDMOND, OK 73034



TOM FIELDS

tfields@priceedwards.com

O: 405.239.1205