

## 15TH STREET STATION

180 W 15TH STREET, EDMOND, OK 73013



### PROPERTY DESCRIPTION

15th Street Station is a well maintained property just west of Broadway Extension on 15th Street. The property is easily accessible and offers competitive Lease rates. End cap space available, and would work great for office space or retail.

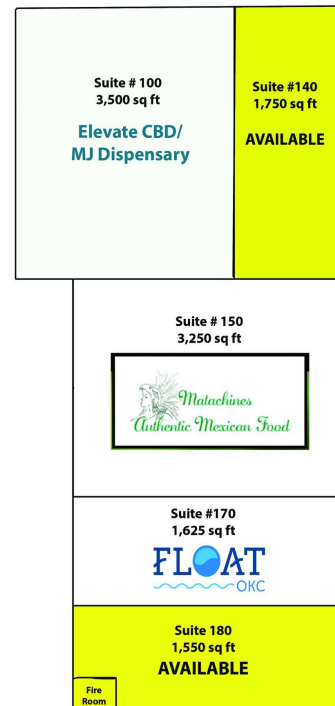
Suite 180 - end cap space with designated parking available  
 Suite 140 - end cap space, highly visible

This Center has excellent foot traffic.

### OFFERING SUMMARY

<b>Lease Rate:</b>	\$14.00 - 20.00 SF/yr (NNN)
<b>Available SF:</b>	1,550 - 1,750 SF
<b>Building Size:</b>	11,675 SF

SPACES	LEASE RATE	SPACE SIZE
Suite 140	\$20.00 SF/yr	1,750 SF
Suite 180	\$14.00 SF/yr	1,550 SF

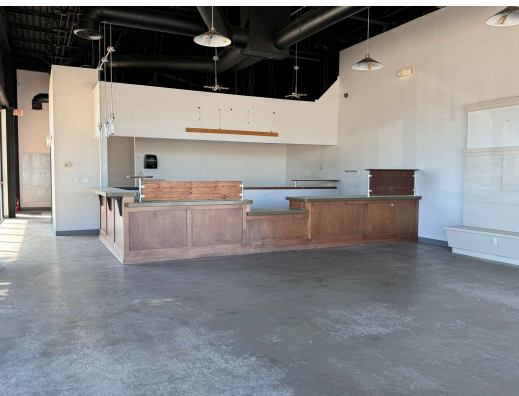


### ROSHA WOOD

rwood@priceedwards.com  
 O: 405.239.1219 C: 405.902.8181

## 15TH STREET STATION

180 W 15TH STREET, EDMOND, OK 73013



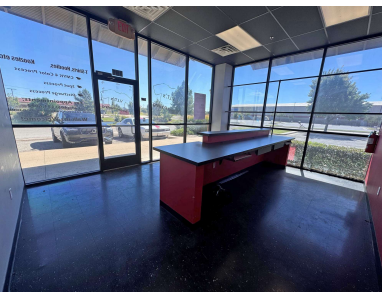
Suite 140 - 1,750 sf | \$20.00 psf



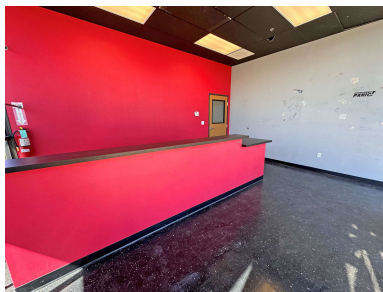
Suite 140 - 1,750 sf | \$20.00 psf



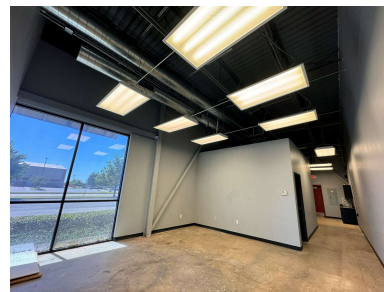
Suite 140 - 1,750 sf | \$20.00 psf



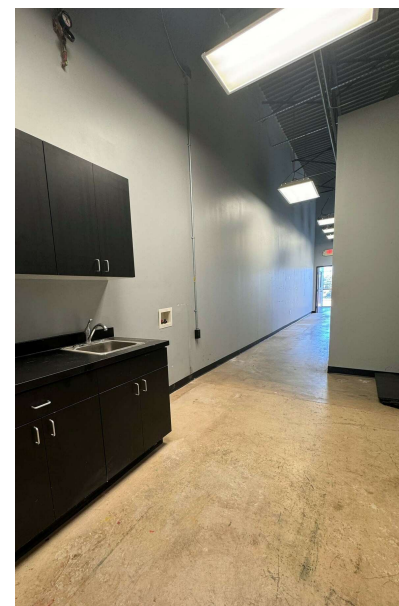
Suite 180 - 1,550 sf | \$14.00 psf



Suite 180 - 1,550 sf | \$14.00 psf



Suite 180 - 1,550 sf | \$14.00 psf



Suite 180 - 1,550 sf | \$14.00 psf

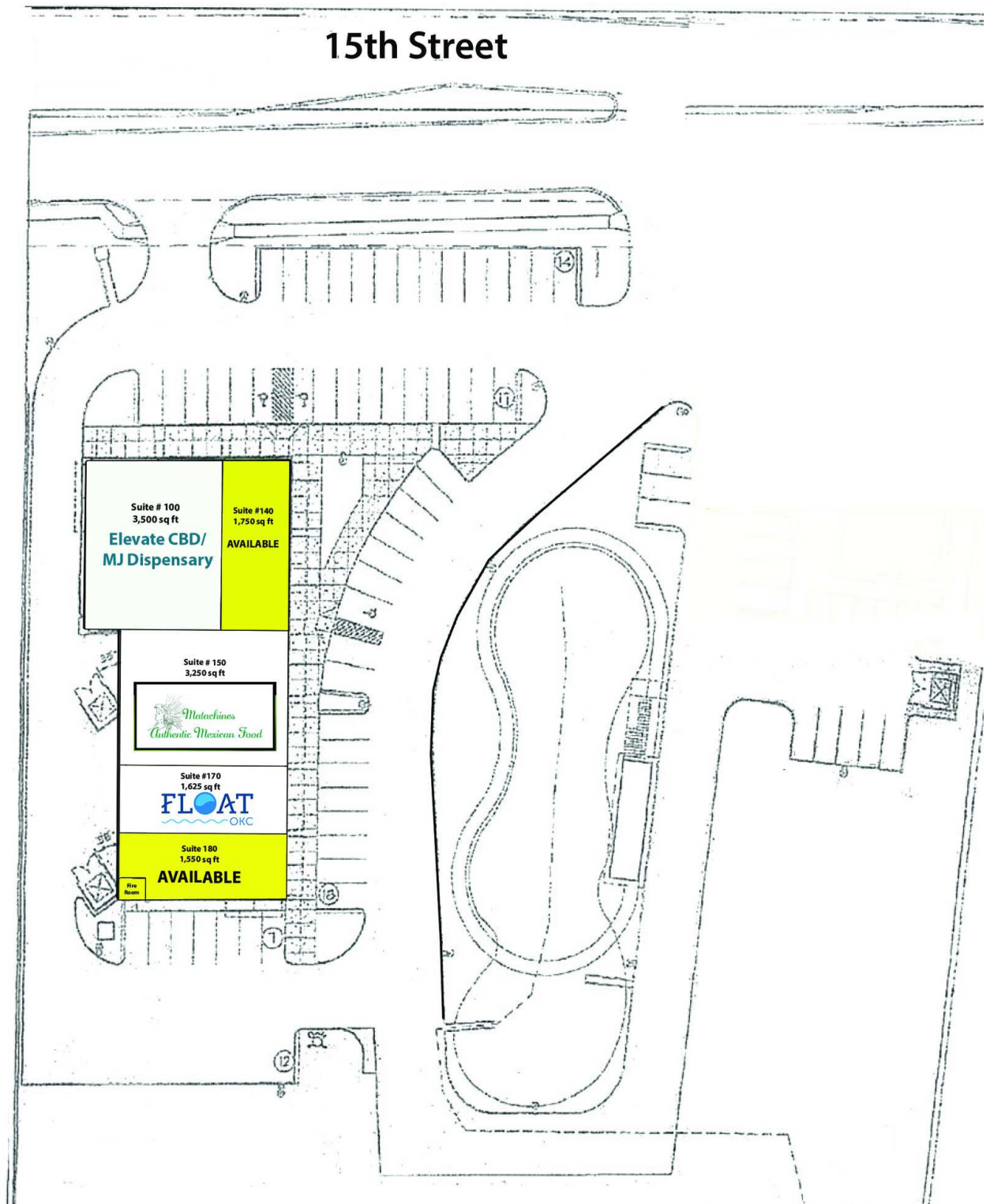
### ROSHA WOOD

[rwood@priceedwards.com](mailto:rwood@priceedwards.com)

O: 405.239.1219 C: 405.902.8181

## 15TH STREET STATION

180 W 15TH STREET, EDMOND, OK 73013



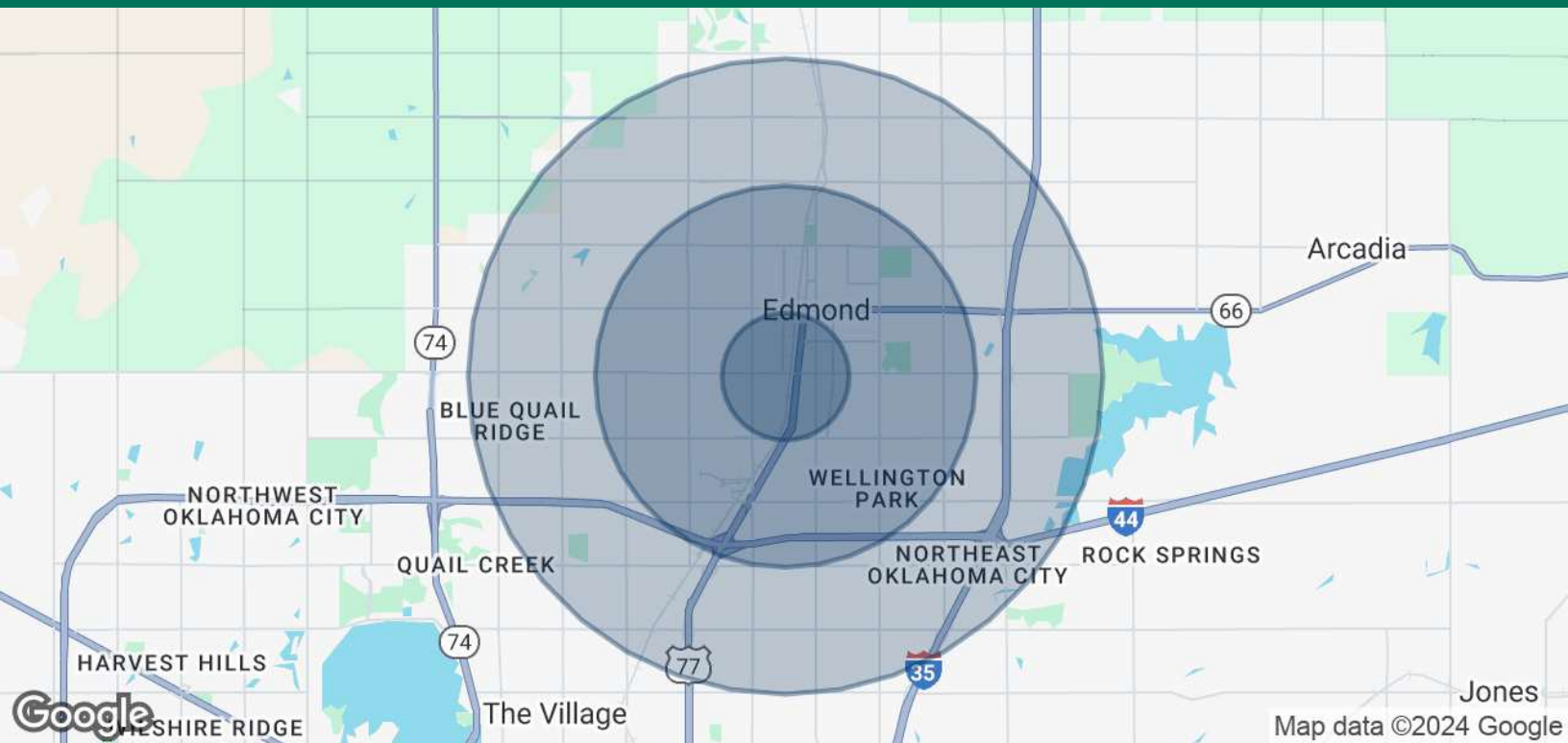
### ROSHA WOOD

rwood@priceedwards.com

O: 405.239.1219 C: 405.902.8181

## 15TH STREET STATION

180 W 15TH STREET, EDMOND, OK 73013



POPULATION	1 MILE	3 MILES	5 MILES
Total Population	9,568	70,892	130,780
Average Age	31.3	31.4	33.4
Average Age (Male)	29.1	29.7	32.0
Average Age (Female)	33.3	33.1	34.7
HOUSEHOLDS & INCOME	1 MILE	3 MILES	5 MILES
Total Households	3,880	27,130	50,436
# of Persons per HH	2.5	2.6	2.6
Average HH Income	\$58,372	\$70,708	\$85,364
Average House Value	\$134,321	\$175,826	\$216,040

2020 American Community Survey (ACS)

09272024

### ROSHA WOOD

rwood@priceedwards.com

O: 405.239.1219 C: 405.902.8181