

## MEDICAL OFFICE SPACE

13301 N. MERIDIAN AVE., OKLAHOMA CITY, OK 73120



### LOCATION DESCRIPTION

Located south on Meridian from Memorial on the west side of Meridian Avenue.

### PROPERTY HIGHLIGHTS

- Conveniently located south of the Kilpatrick and west of Mercy Hospital
- Single-story, free-standing building
- Ample free parking adjacent to building
- Can divide
- 9 exam rooms
- 7 offices
- 2 restrooms
- Break area

### OFFERING SUMMARY

#### AVAILABLE 12-1-2025

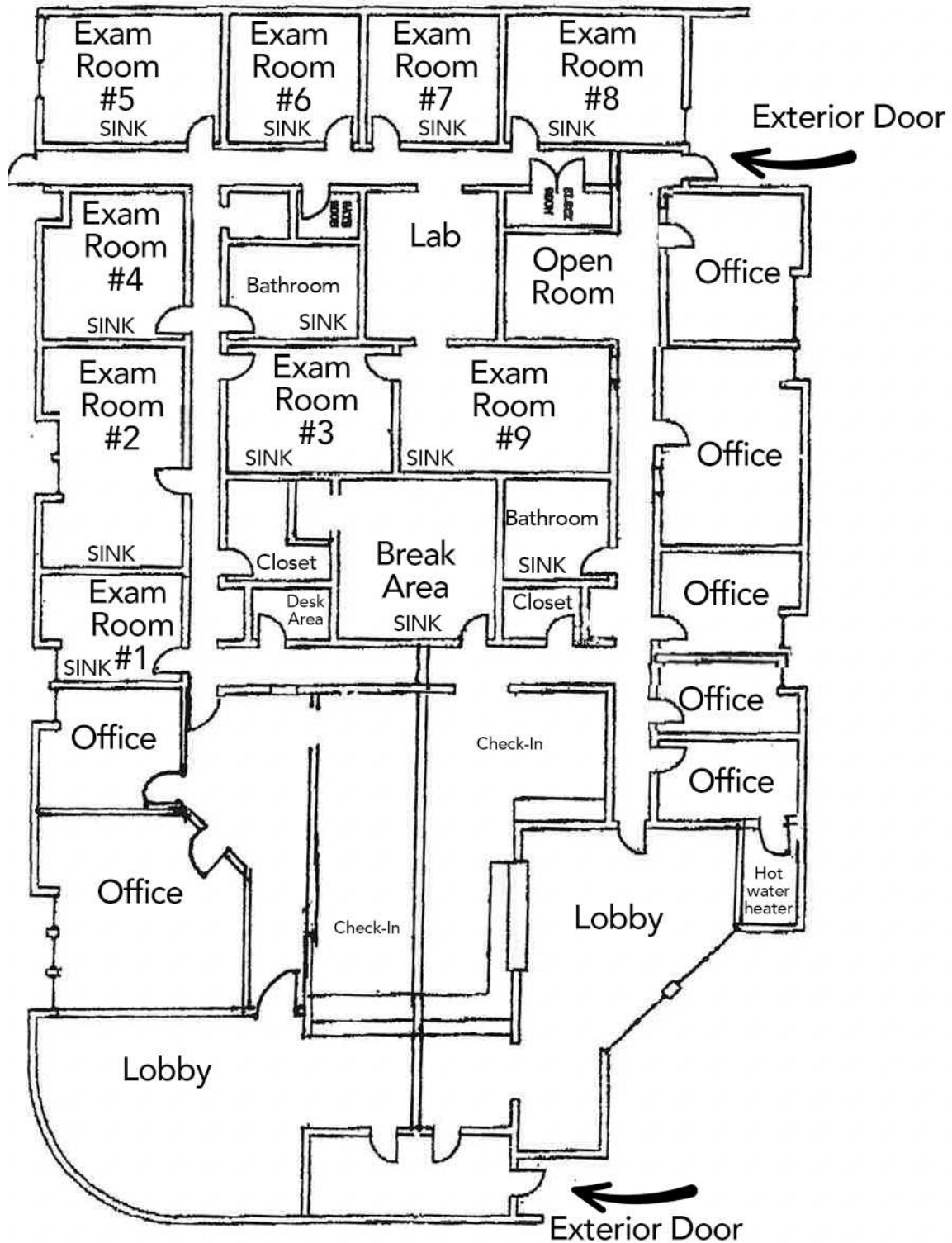
<b>Lease Rate:</b>	\$7,200.00 / month with 3% annual increases  Tenant pays prorate share of utilities, janitorial and IT/phone
<b>Available SF:</b>	5,173 RSF
<b>Building Size:</b>	5,173 SF

### TOM FIELDS

tfields@priceedwards.com  
O: 405.239.1205

## MEDICAL OFFICE SPACE

13301 N. MERIDIAN AVE., OKLAHOMA CITY, OK 73120



### TOM FIELDS

tfields@priceedwards.com

O: 405.239.1205