

11914 N PENNSYLVANIA AVE SUITE B4

OKLAHOMA CITY, OK 73120



PROPERTY DESCRIPTION

Located in the well-established Eagles Office Park, this 900 SF office suite offers a functional and efficient layout, ideal for a variety of business needs. The space features one private office, an open work area suitable for cubicles, a small kitchenette, and two bathrooms. With its prime location on N Pennsylvania Ave, the property provides excellent accessibility to Kilpatrick Turnpike, Lake Hefner Parkway, and a variety of nearby retailers and dining options, including Quail Springs Mall, Target, Starbucks and numerous restaurants along Penn as well as Memorial Road. Ample parking and a professional office park setting create a convenient and productive work environment. This versatile office is move-in ready and well-suited for small businesses, startups, or professional service firms.

LOCATION DESCRIPTION

Located south of NW 122nd Street and Pennsylvania Avenue on the east side of Pennsylvania Avenue in Eagles Office Park.

IAN SELF

iself@priceedwards.com

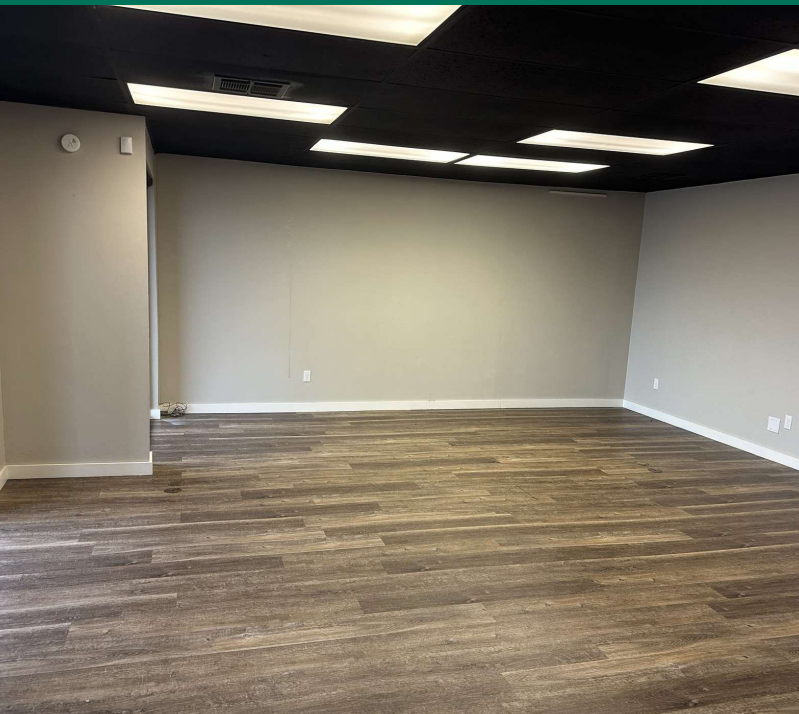
O: 405.239.1271

OFFERING SUMMARY

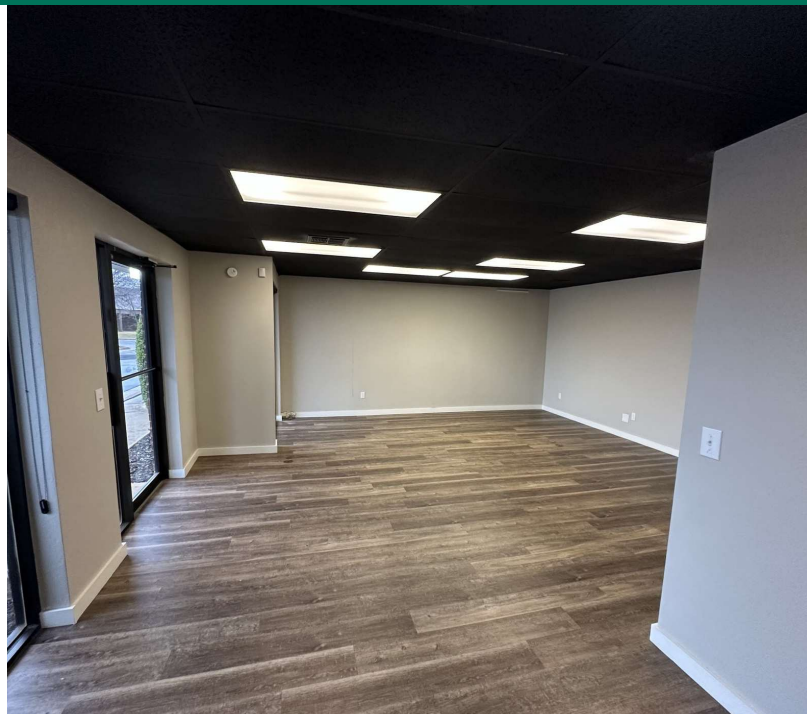
Lease Rate:	\$1,200 + electric per month
Available SF:	900 SF
Building Size:	900 SF
Class:	B
Parking:	On-site

11914 N PENNSYLVANIA AVE SUITE B4

OKLAHOMA CITY, OK 73120



Lobby



Lobby



Office



Hallway / Kitchenette



Front Entry

IAN SELF

iself@priceedwards.com

O: 405.239.1271